

Datasheet for ABIN7196656

Kallikrein 1 Protein (KLK1) (His tag)[Go to Product page](#)**1** Image

Overview

Quantity:	50 µg
Target:	Kallikrein 1 (KLK1)
Origin:	Mouse
Source:	HEK-293 Cells
Protein Type:	Recombinant
Biological Activity:	Active
Purification tag / Conjugate:	This Kallikrein 1 protein is labelled with His tag.

Product Details

Purpose:	Recombinant Mouse Kallikrein 1/KLK1 Protein (His Tag)(Active)
Sequence:	Met1-Asp261
Characteristics:	A DNA sequence encoding the mouse KLK1 (P15947) (Met1-Asp261) was expressed with a C-terminal polyhistidine tag.
Purity:	> 90 % as determined by SDS-PAGE
Endotoxin Level:	< 1.0 EU per µg of the protein as determined by the LAL method.
Biological Activity Comment:	Measured by its ability to cleave a flourogenic peptide substrate Pro-Phe-Arg-7-amido-4-methylcoumarin(PFR-AMC).The specific activity is >6, 000 pmol/min/µg.(Activation description: The proenzyme needs to be activated by Thermolysin for an activated form)

Target Details

Target:	Kallikrein 1 (KLK1)
---------	---------------------

Target Details

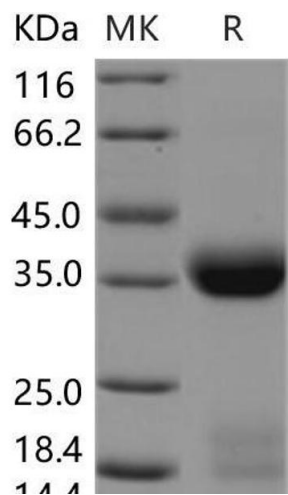
Alternative Name:	Kallikrein 1/KLK1 (KLK1 Products)
Background:	<p>Background: Human tissue kallikrein (KLK1) is a serine protease, component of the KKS that has been demonstrated to exert pleiotropic beneficial effects in protection from tissue injury through its antiinflammatory, antiapoptotic, antifibrotic and antioxidative actions. Polymorphism of the human tissue kallikrein 1 (KLK1) A1789G gene is associated with susceptibility to hypertension.</p> <p>Synonym: Glandular kallikrein K1, KAL-B, Renal kallikrein, Tissue kallikrein-6, mGK-6</p>
Molecular Weight:	28.3 kDa
UniProt:	P15947
Pathways:	Complement System

Application Details

Restrictions:	For Research Use only
---------------	-----------------------

Handling

Format:	Lyophilized
Reconstitution:	Please refer to the printed manual for detailed information.
Buffer:	Lyophilized from sterile 25 mM Tris, 5 mM CaCl ₂ , 0.15 M NaCl, pH 7.4
Storage:	4 °C, -20 °C, -80 °C
Storage Comment:	<p>Generally, lyophilized proteins are stable for up to 12 months when stored at -20 to -80°C.</p> <p>Reconstituted protein solution can be stored at 4-8°C for 2-7 days. Aliquots of reconstituted samples are stable at < -20°C for 3 months.</p>



Western Blotting

Image 1.