

Datasheet for ABIN7197217
Notch1 Protein (His tag)[Go to Product page](#)

1 Image

Overview

Quantity:	50 µg
Target:	Notch1 (NOTCH1)
Origin:	Mouse
Source:	Baculovirus infected Insect Cells
Protein Type:	Recombinant
Biological Activity:	Active
Purification tag / Conjugate:	This Notch1 protein is labelled with His tag.

Product Details

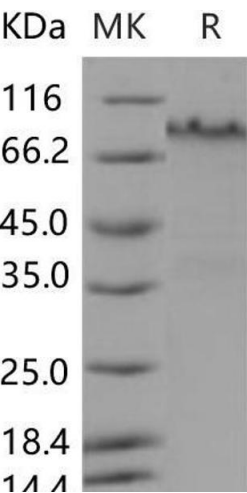
Purpose:	Recombinant Mouse Notch A/NOTCH1 Protein (His Tag)(Active)
Sequence:	Met 1-Gln 526
Characteristics:	A DNA sequence encoding the mouse NOTCH1 (NP_032740.3) N-terminal fragment (Met 1-Gln 526) was expressed, with a C-terminal polyhistidine tag.
Purity:	> 82 % as determined by SDS-PAGE
Endotoxin Level:	< 1.0 EU per µg of the protein as determined by the LAL method.
Biological Activity Comment:	1. Measured by its binding ability in a functional ELISA. 2. Immobilized human DLL4 at 10 µg/mL (100 µl/well) can bind biotinylated mouse NOTCH1-his, The EC50 of biotinylated mouse NOTCH1-his is 40 ng/mL. 3. Immobilized mouse DLL4-his at 10 µg/mL (100 µl/well) can bind biotinylated mouse NOTCH1-his, The EC50 of biotinylated mouse NOTCH1-his is 30 ng/mL.

Target Details

Target:	Notch1 (NOTCH1)
Alternative Name:	Motch A/NOTCH1 (NOTCH1 Products)
Background:	<p>Background: NOTCH1 is one of the four mammalian Notch receptors, which is involved in the Notch signaling pathway. Specifically, NOTCH1 promotes the proliferation of myogenic precursor cells, and the NICD domain of NOTCH1 can impair regeneration of skeletal muscles. NOTCH1 is a prevalent signaling pathway in T cell acute lymphoblastic leukemia (T-ALL). The NOTCH signaling pathway is a conserved signaling cascade that regulates many aspects of development and homeostasis in multiple organ systems. The proto-oncogene NOTCH1 is frequently mutated in around 1 % of patients with chronic lymphocytic leukemia (CLL). NOTCH1 mutations in oral squamous cell carcinoma (OSCC) frequently occur near the ligand-binding region. These mutations change the domain structure of this protein and affect the ligand binding activity. When NOTCH1 is activated by ligand binding, NOTCH1 intracellular domain (NICD) is cleaved from the cell membrane.</p> <p>Synonym: Neurogenic locus notch homolog protein 1, Notch 1, Motch A, Mt14, lin-12, Mis6, N1, Tan1</p>
Molecular Weight:	55 kDa
NCBI Accession:	NP_032740
Pathways:	Notch Signaling , Stem Cell Maintenance , Regulation of Muscle Cell Differentiation , Tube Formation , Skeletal Muscle Fiber Development

Application Details

Restrictions:	For Research Use only
Handling	
Format:	Lyophilized
Reconstitution:	Please refer to the printed manual for detailed information.
Buffer:	Lyophilized from sterile 20 mM Tris, 500 mM NaCl, pH 7.4, 10 % glycerol
Storage:	4 °C, -20 °C, -80 °C
Storage Comment:	Generally, lyophilized proteins are stable for up to 12 months when stored at -20 to -80°C. Reconstituted protein solution can be stored at 4-8°C for 2-7 days. Aliquots of reconstituted samples are stable at < -20°C for 3 months.



Western Blotting

Image 1.