



[Go to Product page](#)

Datasheet for ABIN719741

anti-KCNJ3 antibody (AA 81-180)

2 Images

1 Publication

Overview

Quantity:	100 µL
Target:	KCNJ3
Binding Specificity:	AA 81-180
Reactivity:	Mouse, Rat
Host:	Rabbit
Clonality:	Polyclonal
Conjugate:	This KCNJ3 antibody is un-conjugated
Application:	Western Blotting (WB), ELISA, Immunofluorescence (Cultured Cells) (IF (cc)), Immunofluorescence (Paraffin-embedded Sections) (IF (p)), Immunohistochemistry (Paraffin-embedded Sections) (IHC (p)), Immunohistochemistry (Frozen Sections) (IHC (fro))

Product Details

Immunogen:	KLH conjugated synthetic peptide derived from human GIRK1
Isotype:	IgG
Cross-Reactivity:	Mouse, Rat
Predicted Reactivity:	Human,Dog,Cow,Pig,Rabbit,Guinea Pig
Purification:	Purified by Protein A.

Target Details

Target:	KCNJ3
---------	-------

Target Details

Alternative Name:	GIRK1 (KCNJ3 Products)
Background:	<p>Synonyms: KGA, GIRK1, KIR3.1, G protein-activated inward rectifier potassium channel 1, GIRK-1, Inward rectifier K(+) channel Kir3.1, Potassium channel, inwardly rectifying subfamily J member 3, KCNJ3</p> <p>Background: This potassium channel is controlled by G proteins. Inward rectifier potassium channels are characterized by a greater tendency to allow potassium to flow into the cell rather than out of it. Their voltage dependence is regulated by the concentration of extracellular potassium, as external potassium is raised, the voltage range of the channel opening shifts to more positive voltages. The inward rectification is mainly due to the blockage of outward current by internal magnesium. This receptor plays a crucial role in regulating the heartbeat.</p>
Gene ID:	3760
UniProt:	P48549

Application Details

Application Notes:	WB 1:300-5000 ELISA 1:500-1000 IHC-P 1:200-400 IHC-F 1:100-500 IF(IHC-P) 1:50-200 IF(IHC-F) 1:50-200 IF(ICC) 1:50-200
Restrictions:	For Research Use only

Handling

Format:	Liquid
Concentration:	1 µg/µL
Buffer:	0.01M TBS(pH 7.4) with 1 % BSA, 0.02 % Proclin300 and 50 % Glycerol.
Preservative:	ProClin
Precaution of Use:	This product contains ProClin: a POISONOUS AND HAZARDOUS SUBSTANCE, which should be handled by trained staff only.
Storage:	4 °C,-20 °C

Handling

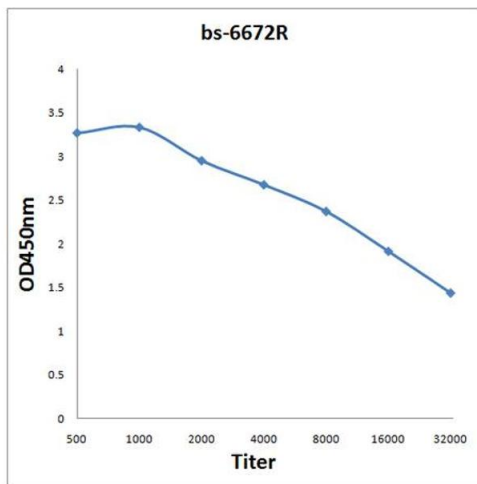
Storage Comment: Shipped at 4°C. Store at -20°C for one year. Avoid repeated freeze/thaw cycles.

Expiry Date: 12 months

Publications

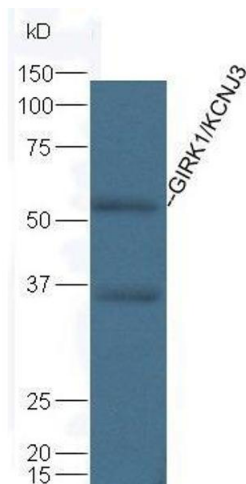
Product cited in: Zhao, Xu, Yun, Zhao, Li, Gong, Yuan, Yan, Zhang, Ding, Wang, Zhang, Dong, Xiu, Yang, Liu, Xue, Li : "Chronic obstructive sleep apnea causes atrial remodeling in canines: mechanisms and implications." in: **Basic research in cardiology**, Vol. 109, Issue 5, pp. 427, (2014) ([PubMed](#)).

Images



ELISA

Image 1. Antigen: 0.2 µg/100 µL Primary: Antiserum, 1:500, 1:1000, 1:2000, 1:4000, 1:8000, 1:16000, 1:32000; Secondary: HRP conjugated Goat-Anti-Rabbit IgG at 1: 5000; TMB staining; Read the data in MicroplateReader by 450



Western Blotting

Image 2. Mouse kidney lysate probed with Rabbit Anti-GIRK1 Polyclonal Antibody at 1:5000 90min in 37°C