

Datasheet for ABIN7197489  
**PDCD1LG2 Protein (His tag)**[Go to Product page](#)

## 1 Image

## Overview

Quantity:	100 µg
Target:	PDCD1LG2
Origin:	Mouse
Source:	HEK-293 Cells
Protein Type:	Recombinant
Biological Activity:	Active
Purification tag / Conjugate:	This PDCD1LG2 protein is labelled with His tag.

## Product Details

Purpose:	Recombinant Mouse B7-DC/PD-L2/CD273 Protein (His Tag)(Active)
Sequence:	Met 1-Arg 219
Characteristics:	A DNA sequence encoding the extracellular domain of mouse PDCD1LG2 (Q9WUL5) (Met 1-Arg 219) was expressed, with a C-terminal polyhistidine tag.
Purity:	> 95 % as determined by SDS-PAGE
Endotoxin Level:	< 1.0 EU per µg of the protein as determined by the LAL method.
Biological Activity Comment:	1. Measured by its binding ability in a functional ELISA.2. Immobilized mouse PD-L2-his at 10 µg/mL (100 µl/well) can bind mouse PD1-Fc. The EC50 of mouse PD1-Fc is 1.63 µg/mL.

## Target Details

Target:	PDCD1LG2
---------	----------

## Target Details

Alternative Name: B7-DC/PD-L2/CD273 ([PDCD1LG2 Products](#))

**Background:** Background: Programmed death ligand 2 (PD-L2), also referred to as B7-DC and CD273, is a member of the B7 family of proteins including B7-1, B7-2, B7-H2, B7-H1 (PD-L1), and B7-H3. PD-L2 is a type I membrane protein and structurally consists of an extracellular region containing one V-like and one C-like Ig domain, a transmembrane region, and a short cytoplasmic domain. PD-L2 is expressed on antigen presenting cells, placental endothelium and medullary thymic epithelial cells, and can be induced by LPS in B cells, INF- $\gamma$  in monocytes, or LPS plus IFN- $\gamma$  in dendritic cells. The CD28 and B7 protein families are critical regulators of immune responses. PD-L2 and PD-L1 are two ligands for PD-1, member of the CD28/CTLA4 family expressed on activated lymphoid cells, and thus provide signals for regulating T cell activation and immune tolerance. The interaction of B7-DC/PD-1 exhibited a 2-6-fold higher affinity compared with the interaction of B7-H1/PD-1.

**Immune Checkpoint Detection:**  
Antibodies Immune Checkpoint Detection: ELISA Antibodies Immune Checkpoint Detection: FCM Antibodies Immune Checkpoint Detection: WB Antibodies  
Immune Checkpoint Proteins Immune Checkpoint Targets Co-inhibitory Immune Checkpoint Targets Immunotherapy Cancer Immunotherapy Targeted Therapy

**Synonym:** Programmed cell death 1 ligand 2; Pdcd1lg2; PD-1 ligand 2; PD-L2; PDCD1 ligand 2; B7-DC; CD273; Btdc; F730015022Rik; PD-L2

Molecular Weight: 24 kDa

UniProt: [Q9WUL5](#)

## Application Details

Restrictions: For Research Use only

## Handling

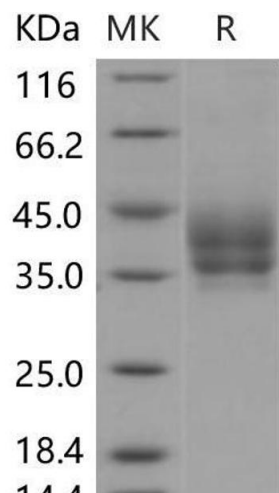
Format: Lyophilized

Reconstitution: Please refer to the printed manual for detailed information.

Buffer: Lyophilized from sterile PBS, pH 7.4

Storage: 4 °C, -20 °C, -80 °C

**Storage Comment:** Generally, lyophilized proteins are stable for up to 12 months when stored at -20 to -80°C. Reconstituted protein solution can be stored at 4-8°C for 2-7 days. Aliquots of reconstituted samples are stable at < -20°C for 3 months.



Western Blotting

Image 1.