

Datasheet for ABIN7197544

**PRSS2 Protein (His tag)**[Go to Product page](#)**1** Image

## Overview

Quantity:	50 µg
Target:	PRSS2
Origin:	Mouse
Source:	HEK-293 Cells
Protein Type:	Recombinant
Biological Activity:	Active
Purification tag / Conjugate:	This PRSS2 protein is labelled with His tag.

## Product Details

Purpose:	Recombinant Mouse Trypsin 2/PRSS2 Protein (His Tag)(Active)
Sequence:	Met 1-Asn 246
Characteristics:	A DNA sequence encoding the mouse PRSS2 (NP_033456.1) precursor (Met 1-Asn 246) was expressed, with a C-terminal polyhistidine tag.
Purity:	> 92 % as determined by SDS-PAGE
Endotoxin Level:	< 1.0 EU per µg of the protein as determined by the LAL method.
Biological Activity Comment:	Measured by its ability to cleave the fluorogenic peptide substrate, Mca-RPKPVE-Nval-WRK(Dnp)-NH <sub>2</sub> (Anaspec, Catalog #27096). The specific activity is >1500 pmoles/min/µg.(Activation description: The proenzyme needs to be activated by enteropeptidase for an activated form)

## Target Details

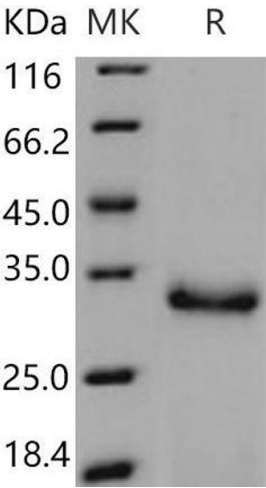
Target:	PRSS2
Alternative Name:	Trypsin 2/PRSS2 ( <a href="#">PRSS2 Products</a> )
Background:	<p>Background: Trypsin-2, also known as Trypsin II, Anionic trypsinogen, Serine protease 2, PRSS2 and TRY2, is a secreted protein which belongs to the trypsin serine protease family including Trypsin, PRSS1, PRSS2 and PRSS3. It consists of a signal peptide (residues 1-15), a pro region (residues 16-23), and a proteolytically active mature chain (residues 24-247). PRSS2 contains one peptidase S1 domain. It is secreted into the duodenum, hydrolysing peptides into their smaller building blocks, which is necessary for the uptake of protein in the food. It is secreted by the pancreas in the form of inactive zymogen, trypsinogen and cleaved to its active form in the small intestine when the pancreas is stimulated by cholecystokinin through the common activation mechanism.</p> <p>Synonym: Prss2;Ta;Tesp4;Try2;TRY8;TRYP</p>
Molecular Weight:	26.2 kDa
NCBI Accession:	<a href="#">NP_033456</a>

## Application Details

Restrictions:	For Research Use only
---------------	-----------------------

## Handling

Format:	Lyophilized
Reconstitution:	Please refer to the printed manual for detailed information.
Buffer:	Lyophilized from sterile PBS, pH 7.5
Storage:	4 °C,-20 °C,-80 °C
Storage Comment:	<p>Generally, lyophilized proteins are stable for up to 12 months when stored at -20 to -80°C.</p> <p>Reconstituted protein solution can be stored at 4-8°C for 2-7 days. Aliquots of reconstituted samples are stable at &lt; -20°C for 3 months.</p>



Western Blotting

Image 1.