

Datasheet for ABIN7197875

**L-Selectin Protein (His tag,Fc Tag)**[Go to Product page](#)**1** Image

## Overview

Quantity:	100 µg
Target:	L-Selectin (SELL)
Origin:	Mouse
Source:	HEK-293 Cells
Protein Type:	Recombinant
Biological Activity:	Active
Purification tag / Conjugate:	This L-Selectin protein is labelled with His tag,Fc Tag.

## Product Details

Purpose:	Recombinant Mouse L-Selectin/SELL Protein (His & Fc Tag)(Active)
Sequence:	Met 1-Asn 332
Characteristics:	A DNA sequence encoding the extracellular domain (Met 1-Asn 332) of mouse SELL (NP_035476.1) precursor was fused with the C-terminal polyhistidine-tagged Fc region of human IgG1 at the C-terminus.
Purity:	> 90 % as determined by SDS-PAGE
Endotoxin Level:	< 1.0 EU per µg of the protein as determined by the LAL method.
Biological Activity Comment:	Measured by the ability of the immobilized protein to support the adhesion of U937 human histiocytic lymphoma cells. When cells are added to SELL coated plates (10 µg/mL, 100 µL/well) approximately >60% cells will adhere specifically.

## Target Details

Target:	L-Selectin (SELL)
Alternative Name:	L-Selectin/SELL ( <a href="#">SELL Products</a> )
Background:	<p>Background: L-selectin (SELL), also known as CD62L, is a key adhesion molecule that regulates both the migration of leukocytes at sites of inflammation and the recirculation of lymphocytes between blood and lymphoid tissues. It belongs to the selectin family of proteins, and consisting of a large, highly glycosylated, extracellular domain, a single spanning transmembrane domain and a small cytoplasmic tail. L-selectin is the only selectin expressed on leukocytes and mediates a number of leukocyte-endothelial interactions. L-selectin acts as a "homing receptor" for leukocytes to enter secondary lymphoid tissues via high endothelial venules. Ligands present on endothelial cells will bind to leukocyte expressing L-selectin, slowing leukocyte trafficking through the blood, and facilitating entry into a secondary lymphoid organ at that point. L-selectin-mediated lymphocyte recirculation is required for maintaining the appropriate tissue distribution of lymphocyte subpopulations including naïve and effector subsets such as regulatory T cells. In addition, L-selectin-mediated entry into peripheral lymph nodes is required for optimal induction of lymphocyte homeostatic proliferation during lymphopenia. Importantly, L-selectin has been shown to have both adhesive and signaling functions during leukocyte migration. L-selectin has also been shown to mediate leukocyte recruitment during chronic inflammatory and autoimmune diseases and thus is a potential therapeutic target for drug development.</p> <p>Synonym: L-selectin;Sell;CD62 antigen-like family member L;Leukocyte adhesion molecule 1;LECAM1;Lymph node homing receptor;Lymphocyte antigen 22;CD62L;LECAM-1;Lnhr;Ly-22;Ly-m22;Lyam-1;Lyam1</p>
Molecular Weight:	61 kDa
NCBI Accession:	<a href="#">NP_035476</a>

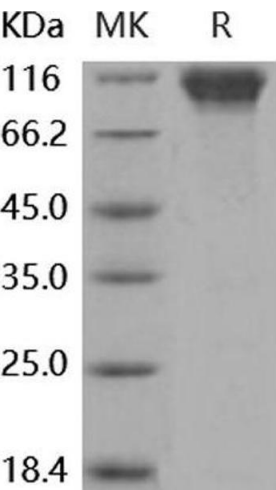
## Application Details

Restrictions:	For Research Use only
Handling	
Format:	Lyophilized
Reconstitution:	Please refer to the printed manual for detailed information.
Buffer:	Lyophilized from sterile PBS, pH 7.4

Handling

Storage:	4 °C,-20 °C,-80 °C
Storage Comment:	Generally, lyophilized proteins are stable for up to 12 months when stored at -20 to -80°C. Reconstituted protein solution can be stored at 4-8°C for 2-7 days. Aliquots of reconstituted samples are stable at < -20°C for 3 months.

Images



**Western Blotting**

**Image 1.**