



[Go to Product page](#)

Datasheet for ABIN7199681

Acetylcholinesterase Protein (AChE) (AA 1-640) (GST tag)

1 Image

Overview

Quantity:	2 µg
Target:	Acetylcholinesterase (AChE)
Protein Characteristics:	AA 1-640
Origin:	Human
Source:	Wheat germ
Protein Type:	Recombinant
Purification tag / Conjugate:	This Acetylcholinesterase protein is labelled with GST tag.
Application:	Western Blotting (WB), ELISA, Affinity Purification (AP), Antibody Array (AA)

Product Details

Purpose:	ACHE (Human) Recombinant Protein (P01)
Sequence:	MRPPQCLLHT PSLASPLLLL LVWLLGGGVG AEGREDAELL VTVRGGRLRG IRLKTPGGPV SAFLGIPFAE PPMGPRRFLP PEPKQPWSGV VDATTFQSVC YQYVDTLYPG FEGTEMWNPN RELSDCLYL NVWTPYPRPT SPTPVIVWIY GGGFYSGASS LDVYDGRFLV QAERTVLVSM NYRVGAFGFL ALPGSREAPG NVGLLDQRLA LQWVQENVAA FGGDPTSVTL FGESAGAASV GMHLLSPPSR GLFHRAVLQS GAPNGPWATV GMGEARRRAT QLAHLVGCPP GGTGGNDEL VACLRTRPAQ VLVNHEWHVL PQESVFRFSF VPVVDGDFLS DTPEALINAG DFHGLQVLVG VVKDEGSYFL VYGAPGFSKD NESLISRAEF LAGVRVGVPQ VSDLAAEAVV LHYTDWLHPE DPARLREALS DVVGDHNVVC PVAQLAGRLA AQGARVYAYV FEHRASTLSW PLWWMGVPHGY EIEFIFGIPL DPSRNYTAAE KIFAQRLMRY WANFARTGDP NEPRDPKAPQ WPPYTAGAQQ YVSLDLRPLE VRRGLRAQAC AFWNRFLPKL LSATDTLDEA ERQWKAEFHR WSSYMVHWKN QFDTTASRIA AQTCDPGGTP MSSAPPGPLA VYTIYFRAGL

Product Details

Characteristics: Human ACHE full-length ORF (AAH94752.1, 1 a.a. - 640 a.a.) recombinant protein with GST-tag at N-terminal.

Purification: in vitro wheat germ expression system

Target Details

Target: Acetylcholinesterase (AChE)

Alternative Name: ACHE ([AChE Products](#))

Background: Full Gene Name: acetylcholinesterase (Yt blood group)
Synonyms: ARACHE,N-ACHE,YT

Gene ID: 43

Pathways: [Skeletal Muscle Fiber Development](#)

Application Details

Application Notes: Optimal working dilution should be determined by the investigator.

Comment: Preparation method: in vitro, wheat germ expression system
Product Quality tested by: 12.5% SDS-PAGE Stained with Coomassie Blue.

Restrictions: For Research Use only

Handling

Buffer: 50 mM Tris-HCl, 10 mM reduced Glutathione, pH =8.0 in the elution buffer.

Handling Advice: Aliquot to avoid repeated freezing and thawing.

Storage: -80 °C

Storage Comment: Best use within three months from the date of receipt of this protein.

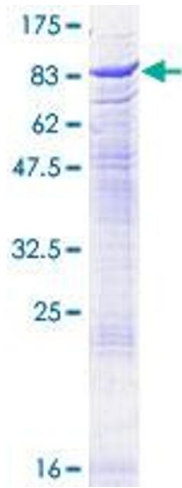


Image 1.