

Datasheet for ABIN7201595

anti-Beclin 1 antibody**3** Images[Go to Product page](#)

Overview

Quantity:	100 µL
Target:	Beclin 1 (BECN1)
Reactivity:	Human, Mouse, Rat
Host:	Mouse
Clonality:	Monoclonal
Conjugate:	This Beclin 1 antibody is un-conjugated
Application:	Western Blotting (WB), Immunohistochemistry (Paraffin-embedded Sections) (IHC (p))

Product Details

Purpose:	Beclin-1 Mouse Monoclonal Antibody (5C2)
Immunogen:	Synthetic Peptide of Beclin-1 at AA range of 110-190
Clone:	5C2
Isotype:	IgG1
Specificity:	Beclin-1 protein detects endogenous levels of BECN1.
Purification:	The antibody was affinity-purified from mouse ascites by affinity-chromatography using specific immunogen

Target Details

Target:	Beclin 1 (BECN1)
Alternative Name:	Beclin-1 (BECN1 Products)

Target Details

Background: Mouse Anti-Beclin-1 Mouse Monoclonal Antibody (5C2),BECN1,BECN1 (beclin 1) encodes a protein that regulates autophagy, a catabolic process of degradation induced by starvation. The encoded protein is a component of the phosphatidylinositol-3-kinase (PI3K) complex which mediates vesicle-trafficking processes. This protein is thought to play a role in multiple cellular processes, including tumorigenesis, neurodegeneration and apoptosis. Alternative splicing results in multiple transcript variants.,BECN1

Gene ID: 8678

UniProt: [Q14457](#)

Pathways: [Autophagy](#)

Application Details

Application Notes: Optimal working dilutions should be determined experimentally by the investigator. Suggested starting dilutions are as follows: WB (1:1000-1:2000), IHC-P (1:100-1:200).

Restrictions: For Research Use only

Handling

Format: Liquid

Concentration: 1 mg/mL

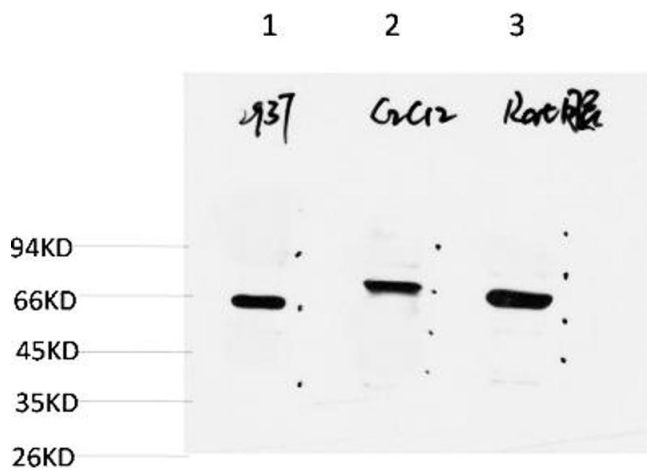
Buffer: PBS containing 50 % Glycerol, 0.5 % BSA and 0.02 % Sodium Azide.

Preservative: Sodium azide

Precaution of Use: This product contains Sodium azide: a POISONOUS AND HAZARDOUS SUBSTANCE which should be handled by trained staff only.

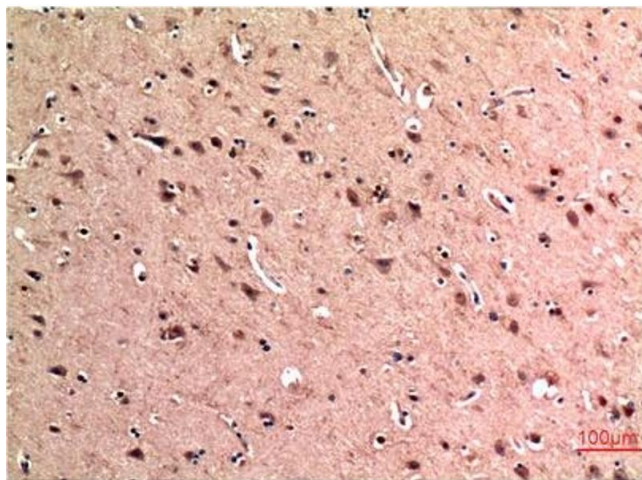
Storage: -20 °C

Storage Comment: Stable for one year at -20°C from date of shipment. For maximum recovery of product, centrifuge the original vial after thawing and prior to removing the cap. Aliquot to avoid repeated freezing and thawing.



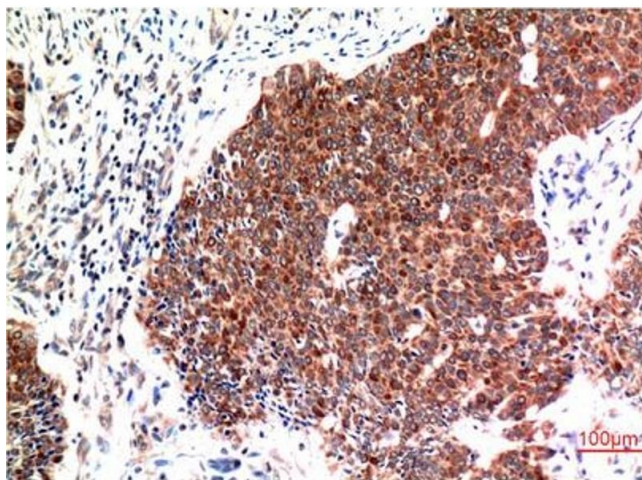
Western Blotting

Image 1. Western blot analysis of 1) 293T Cell Lysate, 2) C2C12 Cell Lysate, 3) Rat Brain Tissue Lysate using Beclin-1 Mouse mAb diluted at 1:2000.



Immunohistochemistry

Image 2. Immunohistochemical analysis of paraffin-embedded Human Brain Tissue using Beclin-1 Mouse mAb diluted at 1:200.



Immunohistochemistry

Image 3. Immunohistochemical analysis of paraffin-embedded Human Breast Carcinoma Tissue using Beclin-1 Mouse mAb diluted at 1:200.