

Datasheet for ABIN7201647
anti-BMP2 antibody (C-Term)

6 Images

[Go to Product page](#)

Overview

Quantity:	100 µL
Target:	BMP2
Binding Specificity:	C-Term
Reactivity:	Human, Rat, Mouse
Host:	Rabbit
Clonality:	Polyclonal
Conjugate:	This BMP2 antibody is un-conjugated
Application:	Western Blotting (WB), ELISA, Immunohistochemistry (Paraffin-embedded Sections) (IHC (p)), Immunofluorescence (IF)

Product Details

Purpose:	BMP-2 Polyclonal Antibody
Immunogen:	Synthesized peptide derived from the C-terminal region of human BMP-2
Isotype:	IgG
Specificity:	BMP-2 Polyclonal Antibody detects endogenous levels of BMP-2 protein.
Purification:	The antibody was affinity-purified from rabbit antiserum by affinity-chromatography using epitope-specific immunogen

Target Details

Target:	BMP2
---------	------

Target Details

Alternative Name:	BMP-2 (BMP2 Products)
Background:	Rabbit Anti-BMP-2 Polyclonal Antibody,BMP2, BMP2A, Bone morphogenetic protein 2, BMP-2, Bone morphogenetic protein 2A, BMP-2A,BMP2 (bone morphogenetic protein 2) encodes a secreted ligand of the TGF-beta (transforming growth factor-beta) superfamily of proteins. Ligands of this family bind various TGF-beta receptors leading to recruitment and activation of SMAD family transcription factors that regulate gene expression. The encoded preproprotein is proteolytically processed to generate each subunit of the disulfide-linked homodimer, which plays a role in bone and cartilage development. Duplication of a regulatory region downstream of BMP2 causes a form of brachydactyly characterized by a malformed index finger and second toe in human patients.,Bone morphogenetic protein 2
Gene ID:	650
UniProt:	P12643
Pathways:	Regulation of Hormone Metabolic Process , Regulation of Hormone Biosynthetic Process , Regulation of Muscle Cell Differentiation , Growth Factor Binding , Positive Regulation of fat Cell Differentiation

Application Details

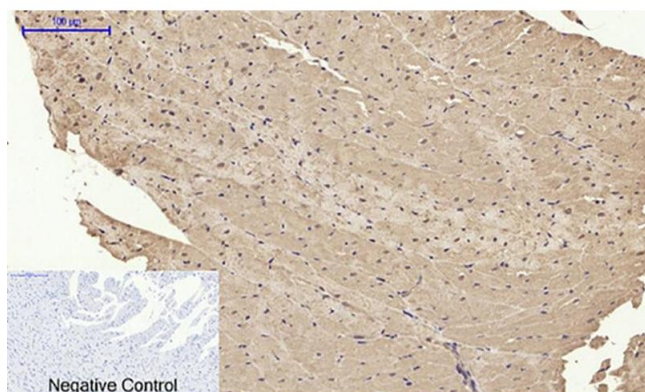
Application Notes:	Optimal working dilutions should be determined experimentally by the investigator. Suggested starting dilutions are as follows: WB (1:500-1:2000), IF (1:50-1:200), IHC-P (1:100-1:300), ELISA (1:10000). Not yet tested in other applications.
Restrictions:	For Research Use only

Handling

Format:	Liquid
Concentration:	1 mg/mL
Buffer:	PBS containing 50 % Glycerol, 0.5 % BSA and 0.02 % Sodium Azide.
Preservative:	Sodium azide
Precaution of Use:	This product contains Sodium azide: a POISONOUS AND HAZARDOUS SUBSTANCE which should be handled by trained staff only.
Storage:	-20 °C
Storage Comment:	Stable for one year at -20°C from date of shipment. For maximum recovery of product,

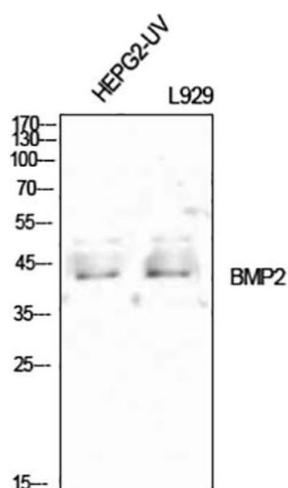
centrifuge the original vial after thawing and prior to removing the cap. Aliquot to avoid repeated freezing and thawing.

Images



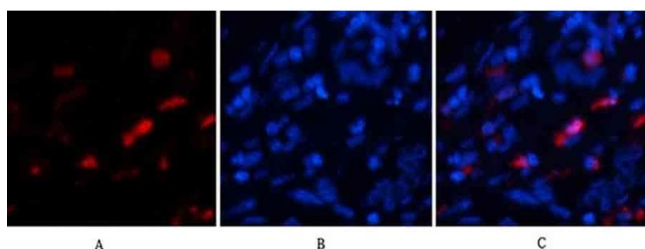
Immunohistochemistry

Image 1. Immunohistochemical analysis of paraffin-embedded rat heart tissue. 1, BMP-2 Polyclonal Antibody was diluted at 1:200 (4 °C, overnight). 2, Sodium citrate pH 6.0 was used for antibody retrieval (>98 °C, 20 min). 3, secondary antibody was diluted at 1:200 (room temperature, 30 min). Negative control was used by secondary antibody only.



Western Blotting

Image 2. Western Blot analysis of HEPG2-UV (1), L929 (2), diluted at 1:1000.



Immunofluorescence

Image 3. Immunofluorescence analysis of human liver tissue. 1, BMP-2 Polyclonal Antibody (red) was diluted at 1:200 (4 °C, overnight). 2, Cy3 Labeled secondary antibody was diluted at 1:300 (room temperature, 50 min). 3, Picture B: DAPI (blue) 10 min. Picture A: Target. Picture B: DAPI. Picture C: merge of A+B.

Please check the [product details page](#) for more images. Overall 6 images are available for ABIN7201647.