

Datasheet for ABIN7201785
anti-E-cadherin antibody (AA 810-890)

6 Images

[Go to Product page](#)

Overview

Quantity:	100 µL
Target:	E-cadherin (CDH1)
Binding Specificity:	AA 810-890
Reactivity:	Human, Mouse, Rat
Host:	Rabbit
Clonality:	Polyclonal
Conjugate:	This E-cadherin antibody is un-conjugated
Application:	Western Blotting (WB), ELISA, Immunofluorescence (IF), Immunohistochemistry (Paraffin-embedded Sections) (IHC (p))

Product Details

Purpose:	E-cadherin Polyclonal Antibody
Immunogen:	Synthesized peptide derived from the C-terminal region of human E-cadherin at AA range: 810-890
Isotype:	IgG
Specificity:	E-cadherin Polyclonal Antibody detects endogenous levels of E-cadherin protein.
Purification:	The antibody was affinity-purified from rabbit antiserum by affinity-chromatography using epitope-specific immunogen

Target Details

Target:	E-cadherin (CDH1)
---------	-------------------

Target Details

Alternative Name:	E-cadherin (CDH1 Products)
Background:	Rabbit Anti-E-cadherin Polyclonal Antibody, CDH1, CDHE, UVO, Cadherin-1, CAM 120/80, Epithelial cadherin, E-cadherin, Uvomorulin, CD antigen CD324, CDH2, CDHN, NCAD, Cadherin-2, CDw325, Neural cadherin, N-cadherin, CD antigen CD325, CDH3, CDHP, Cadherin-3, Placental cadherin, P-cadhe, CDH1 encodes a classical cadherin of the cadherin superfamily. Alternative splicing results in multiple transcript variants, at least one of which encodes a preproprotein that is proteolytically processed to generate the mature glycoprotein. This calcium-dependent cell-cell adhesion protein is comprised of five extracellular cadherin repeats, a transmembrane region and a highly conserved cytoplasmic tail. Mutations in CDH1 are correlated with gastric, breast, colorectal, thyroid and ovarian cancer. Loss of function of this gene is thought to contribute to cancer progression by increasing proliferation, invasion, and/or metastasis. The ectodomain of this protein mediates bacterial adhesion to mammalian cells and the cytoplasmic domain is required for internalization. CDH1 is present in a gene cluster with other members of the cadherin family on chromosome 16., Cadherin-1
Gene ID:	999, 1000, 1001
Pathways:	WNT Signaling , Sensory Perception of Sound , Cell-Cell Junction Organization , Tube Formation

Application Details

Application Notes:	Optimal working dilutions should be determined experimentally by the investigator. Suggested starting dilutions are as follows: WB (1:500-1:2000), IF (1:200-1:1000), IHC-P (1:100-1:300), ELISA (1:20000). Not yet tested in other applications.
Restrictions:	For Research Use only

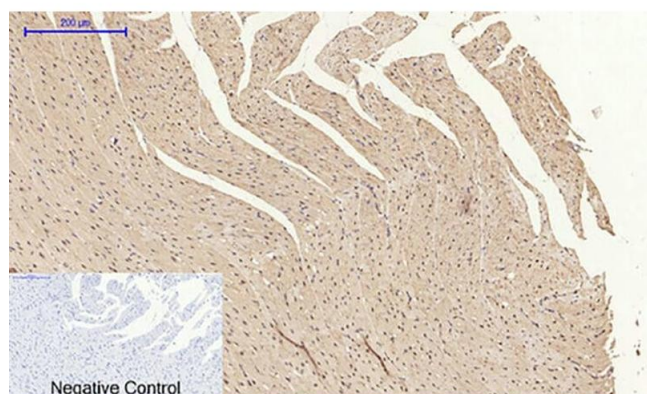
Handling

Format:	Liquid
Concentration:	1 mg/mL
Buffer:	PBS containing 50 % Glycerol, 0.5 % BSA and 0.02 % Sodium Azide.
Preservative:	Sodium azide
Precaution of Use:	This product contains Sodium azide: a POISONOUS AND HAZARDOUS SUBSTANCE which should be handled by trained staff only.
Storage:	-20 °C

Handling

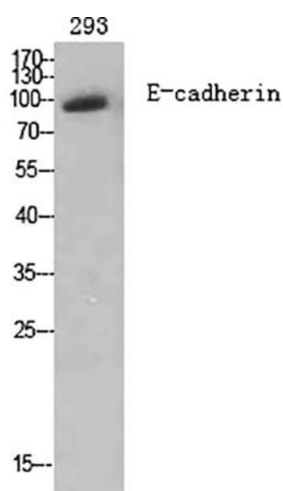
Storage Comment: Stable for one year at -20°C from date of shipment. For maximum recovery of product, centrifuge the original vial after thawing and prior to removing the cap. Aliquot to avoid repeated freezing and thawing.

Images



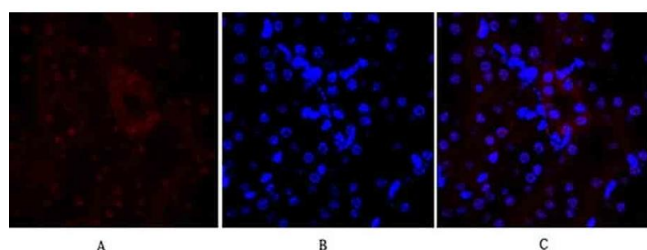
Immunohistochemistry

Image 1. Immunohistochemical analysis of paraffin-embedded rat heart tissue. 1, E-cadherin Polyclonal Antibody was diluted at 1:200 (4 °C, overnight). 2, Sodium citrate pH 6.0 was used for antibody retrieval (>98 °C, 20 min). 3, secondary antibody was diluted at 1:200 (room temperature, 30 min). Negative control was used by secondary antibody only.



Western Blotting

Image 2. Western Blot analysis of various cells using E-cadherin Polyclonal Antibody diluted at 1:2000.



Immunofluorescence

Image 3. Immunofluorescence analysis of mouse kidney tissue. 1, E-cadherin Polyclonal Antibody (red) was diluted at 1:200 (4 °C, overnight). 2, Cy3 labeled secondary antibody was diluted at 1:300 (room temperature, 50 min). 3, Picture B: DAPI (blue) 10 min. Picture A: Target. Picture B: DAPI. Picture C: merge of A+B.

Please check the [product details page](#) for more images. Overall 6 images are available for ABIN7201785.