

Datasheet for ABIN7201876
anti-Calnexin antibody



[Go to Product page](#)

5 Images

Overview

Quantity:	100 µL
Target:	Calnexin (CANX)
Reactivity:	Human, Mouse, Rat
Host:	Rabbit
Clonality:	Polyclonal
Conjugate:	This Calnexin antibody is un-conjugated
Application:	Western Blotting (WB), Immunofluorescence (IF), ELISA, Immunohistochemistry (Paraffin-embedded Sections) (IHC (p))

Product Details

Purpose:	Calnexin Polyclonal Antibody
Immunogen:	Synthesized peptide derived from human Calnexin around the non-phosphorylation site of S583
Isotype:	IgG
Specificity:	Calnexin Polyclonal Antibody detects endogenous levels of Calnexin protein.
Purification:	The antibody was affinity-purified from rabbit antiserum by affinity-chromatography using epitope-specific immunogen

Target Details

Target:	Calnexin (CANX)
Alternative Name:	Calnexin (CANX Products)

Target Details

Background: Rabbit Anti-Calnexin Polyclonal Antibody,CANX, Calnexin, IP90, Major histocompatibility complex class I antigen-binding protein p88, p90,CANX encodes a member of the calnexin family of molecular chaperones. Calnexin is a calcium-binding, endoplasmic reticulum (ER)-associated protein that interacts transiently with newly synthesized N-linked glycoproteins, facilitating protein folding and assembly. It may also play a central role in the quality control of protein folding by retaining incorrectly folded protein subunits within the ER for degradation. Alternatively spliced transcript variants encoding the same protein have been described.,Calnexin

Gene ID: 821

UniProt: [P27824](#)

Pathways: [MAPK Signaling](#), [Thyroid Hormone Synthesis](#)

Application Details

Application Notes: Optimal working dilutions should be determined experimentally by the investigator. Suggested starting dilutions are as follows: WB (1:500-1:2000), IF (1:200-1:1000), IHC-P (1:100-1:300), ELISA (1:5000). Not yet tested in other applications.

Restrictions: For Research Use only

Handling

Format: Liquid

Concentration: 1 mg/mL

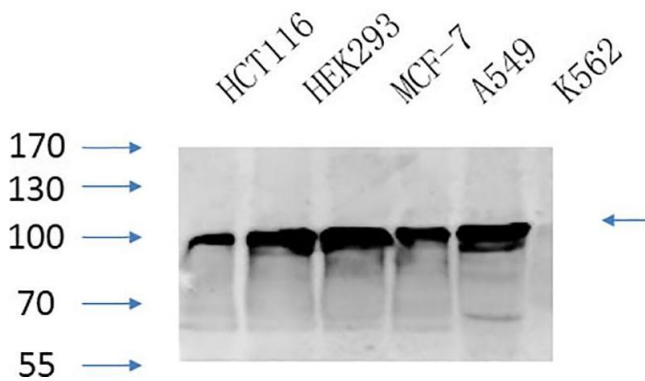
Buffer: PBS containing 50 % Glycerol, 0.5 % BSA and 0.02 % Sodium Azide.

Preservative: Sodium azide

Precaution of Use: This product contains Sodium azide: a POISONOUS AND HAZARDOUS SUBSTANCE which should be handled by trained staff only.

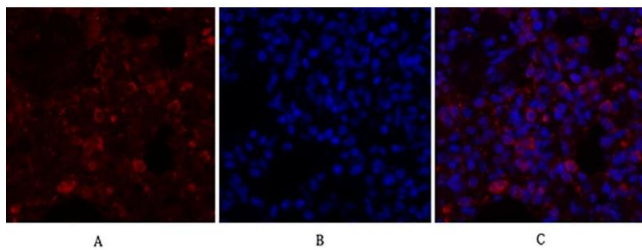
Storage: -20 °C

Storage Comment: Stable for one year at -20°C from date of shipment. For maximum recovery of product, centrifuge the original vial after thawing and prior to removing the cap. Aliquot to avoid repeated freezing and thawing.



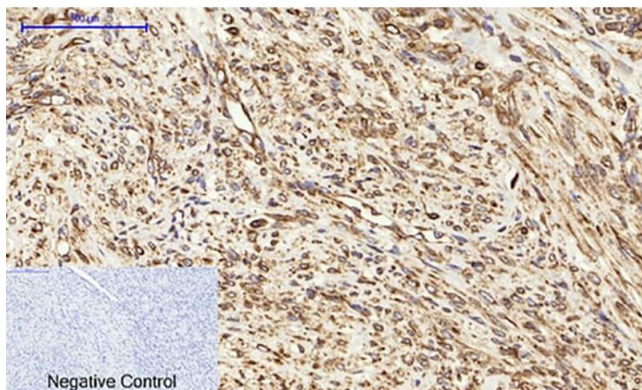
Western Blotting

Image 1. Western Blot analysis of HCT116 (1), HEK293 (2), MCF-7 (3), A594 (4), K562 (5), diluted at 1:1000.



Immunofluorescence

Image 2. Immunofluorescence analysis of rat lung tissue. 1, Calnexin Polyclonal Antibody (red) was diluted at 1:200 (4 °C, overnight). 2, Cy3 labeled secondary antibody was diluted at 1:300 (room temperature, 50 min). 3, Picture B: DAPI (blue) 10 min. Picture A: Target. Picture B: DAPI. Picture C: merge of A+B.



Immunohistochemistry

Image 3. Immunohistochemical analysis of paraffin-embedded human uterus cancer tissue. 1, Calnexin Polyclonal Antibody was diluted at 1:200 (4 °C, overnight). 2, Sodium citrate pH 6.0 was used for antibody retrieval (>98 °C, 20 min). 3, secondary antibody was diluted at 1:200 (room temperature, 30 min). Negative control was used by secondary antibody only.

Please check the [product details page](#) for more images. Overall 5 images are available for ABIN7201876.