

Datasheet for ABIN7201896

**anti-CaMKIIbeta/gamma/delta antibody (pThr287)**[Go to Product page](#)**2** Images

## Overview

Quantity:	100 µL
Target:	CaMKIIbeta/gamma/delta
Binding Specificity:	pThr287
Reactivity:	Human, Mouse, Rat
Host:	Rabbit
Clonality:	Polyclonal
Conjugate:	This CaMKIIbeta/gamma/delta antibody is un-conjugated
Application:	Western Blotting (WB), ELISA, Immunohistochemistry (Paraffin-embedded Sections) (IHC (p)), Immunofluorescence (IF)

## Product Details

Purpose:	CaMKIIβ/γ/δ (phospho Thr287) Polyclonal Antibody
Immunogen:	Synthesized peptide derived from human CaMKIIbeta/gamma/delta Phospho-Thr287
Isotype:	IgG
Specificity:	Phospho-CaMKIIβ/γ/δ (T287) Polyclonal Antibody detects endogenous levels of CaMKIIβ/γ/δ protein only when phosphorylated at T287.
Purification:	The antibody was affinity-purified from rabbit antiserum by affinity-chromatography using epitope-specific immunogen

## Target Details

Target:	CaMKIIbeta/gamma/delta
---------	------------------------

## Target Details

Abstract: [CaMKIIbeta/gamma/delta Products](#)

Background: Rabbit Anti-CaMKII $\beta$ / $\gamma$ / $\delta$  (phospho Thr287) Polyclonal Antibody, CAMK2B, CAM2, CAMK2, CAMKB, Calcium/calmodulin-dependent protein kinase type II subunit beta, CaM kinase II subunit beta, CaMK-II subunit beta, CAMK2G, CAMK, CAMK-II, CAMKG, Calcium/calmodulin-dependent protein kinase type II subunit gamma, The product of CAMK2B (calcium/calmodulin dependent protein kinase II beta) belongs to the serine/threonine protein kinase family and to the Ca (2+) /calmodulin-dependent protein kinase subfamily. Calcium signaling is crucial for several aspects of plasticity at glutamatergic synapses. In mammalian cells, the enzyme is composed of four different chains: alpha, beta, gamma, and delta. The product of CAMK2B is a beta chain. It is possible that distinct isoforms of this chain have different cellular localizations and interact differently with calmodulin. Alternative splicing results in multiple transcript variants., Calcium calmodulin-dependent protein kinase type II subunit beta

Gene ID: 816, 818, 817

## Application Details

Application Notes: Optimal working dilutions should be determined experimentally by the investigator. Suggested starting dilutions are as follows: WB (1:500-1:2000), IF (1:50-1:200), IHC-P (1:100-1:300), ELISA (1:5000). Not yet tested in other applications.

Restrictions: For Research Use only

## Handling

Format: Liquid

Concentration: 1 mg/mL

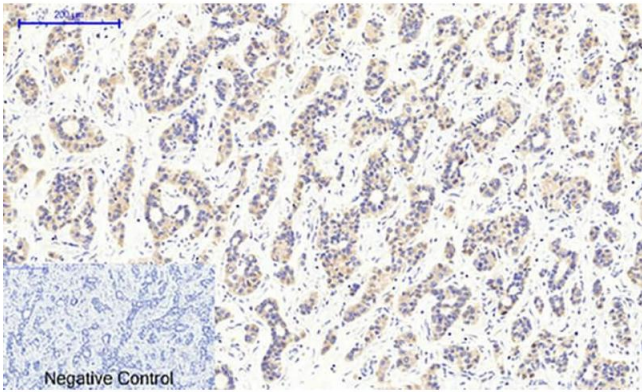
Buffer: PBS containing 50 % Glycerol, 0.5 % BSA and 0.02 % Sodium Azide.

Preservative: Sodium azide

Precaution of Use: This product contains Sodium azide: a POISONOUS AND HAZARDOUS SUBSTANCE which should be handled by trained staff only.

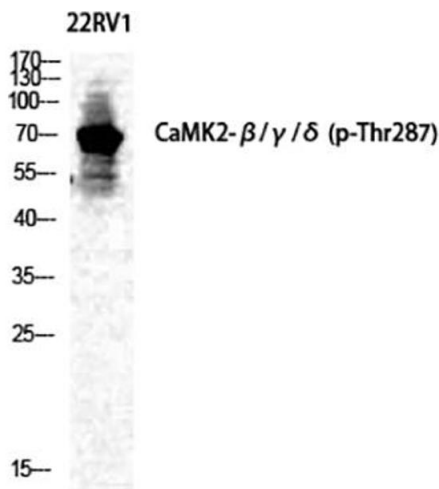
Storage: -20 °C

Storage Comment: Stable for one year at -20°C from date of shipment. For maximum recovery of product, centrifuge the original vial after thawing and prior to removing the cap. Aliquot to avoid repeated freezing and thawing.



### Immunohistochemistry

**Image 1.** Immunohistochemical analysis of paraffin-embedded human liver cancer tissue. 1, CaMKIIβ/γ/δ (phospho Thr287) Polyclonal Antibody was diluted at 1:200 (4 °C, overnight). 2, Sodium citrate pH 6.0 was used for antibody retrieval (>98 °C, 20 min). 3, secondary antibody was diluted at 1:200 (room temperature, 30 min). Negative control was used by secondary antibody only.



### Western Blotting

**Image 2.** Western Blot analysis of 22RV1 cells using Phospho-CaMKIIβ/γ/δ (T287) Polyclonal Antibody diluted at 1:500.