



[Go to Product page](#)

Datasheet for ABIN7202718
anti-COL2A1 antibody (AA 70-150)

5 Images

Overview

Quantity:	100 µL
Target:	COL2A1
Binding Specificity:	AA 70-150
Reactivity:	Human, Mouse, Rat
Host:	Rabbit
Clonality:	Polyclonal
Conjugate:	This COL2A1 antibody is un-conjugated
Application:	Western Blotting (WB), ELISA, Immunohistochemistry (Paraffin-embedded Sections) (IHC (p)), Immunofluorescence (IF)

Product Details

Purpose:	COL2A1 Polyclonal Antibody
Immunogen:	Synthesized peptide derived from the N-terminal region of human COL2A1 at AA range: 70-150
Isotype:	IgG
Specificity:	COL2A1 Polyclonal Antibody detects endogenous levels of COL2A1 protein.
Purification:	The antibody was affinity-purified from rabbit antiserum by affinity-chromatography using epitope-specific immunogen

Target Details

Target:	COL2A1
---------	--------

Target Details

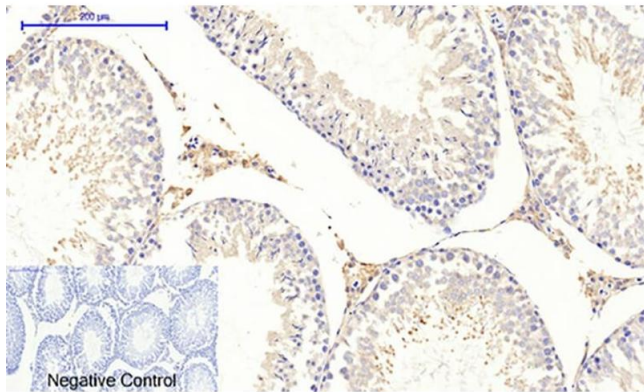
Alternative Name:	COL2A1 (COL2A1 Products)
Background:	Rabbit Anti-COL2A1 Polyclonal Antibody, COL2A1, Collagen alpha-1(II) chain, Alpha-1 type II collagen, COL2A1 encodes the alpha-1 chain of type II collagen, a fibrillar collagen found in cartilage and the vitreous humor of the eye. Mutations in COL2A1 are associated with achondrogenesis, chondrodysplasia, early onset familial osteoarthritis, SED congenita, Langer-Saldino achondrogenesis, Kniest dysplasia, Stickler syndrome type I, and spondyloepimetaphyseal dysplasia Strudwick type. In addition, defects in processing chondrocalcin, a calcium binding protein that is the C-propeptide of this collagen molecule, are also associated with chondrodysplasia. There are two transcripts identified for COL2A1., Collagen alpha-1(II) chain
Gene ID:	1280
UniProt:	P02458
Pathways:	Sensory Perception of Sound , Growth Factor Binding

Application Details

Application Notes:	Optimal working dilutions should be determined experimentally by the investigator. Suggested starting dilutions are as follows: WB (1:500-1:2000), IF (1:200-1:1000), IHC-P (1:100-1:300), ELISA (1:20000). Not yet tested in other applications.
Restrictions:	For Research Use only

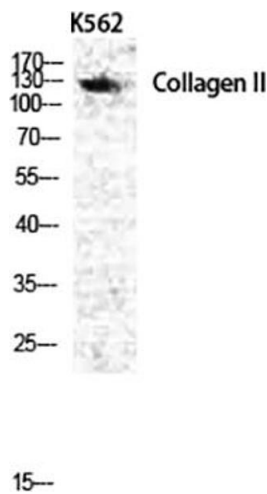
Handling

Format:	Liquid
Concentration:	1 mg/mL
Buffer:	PBS containing 50 % Glycerol, 0.5 % BSA and 0.02 % Sodium Azide.
Preservative:	Sodium azide
Precaution of Use:	This product contains Sodium azide: a POISONOUS AND HAZARDOUS SUBSTANCE which should be handled by trained staff only.
Storage:	-20 °C
Storage Comment:	Stable for one year at -20°C from date of shipment. For maximum recovery of product, centrifuge the original vial after thawing and prior to removing the cap. Aliquot to avoid repeated freezing and thawing.



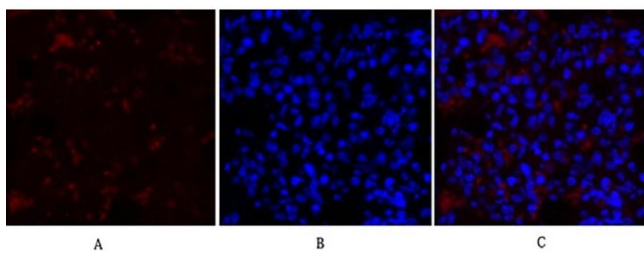
Immunohistochemistry

Image 1. Immunohistochemical analysis of paraffin-embedded rat testis tissue. 1, COL2A1 Polyclonal Antibody was diluted at 1:200 (4 °C, overnight). 2, Sodium citrate pH 6.0 was used for antibody retrieval (>98 °C, 20 min). 3, secondary antibody was diluted at 1:200 (room temperature, 30 min). Negative control was used by secondary antibody only.



Western Blotting

Image 2. Western Blot analysis of various cells using COL2A1 Polyclonal Antibody diluted at 1:1000.



Immunofluorescence

Image 3. Immunofluorescence analysis of rat lung tissue. 1, COL2A1 Polyclonal Antibody (red) was diluted at 1:200 (4 °C, overnight). 2, Cy3 labeled secondary antibody was diluted at 1:300 (room temperature, 50 min). 3, Picture B: DAPI (blue) 10 min. Picture A: Target. Picture B: DAPI. Picture C: merge of A+B.

Please check the [product details page](#) for more images. Overall 5 images are available for ABIN7202718.