

Datasheet for ABIN720281

**anti-PLA2G6 antibody (AA 651-750)**[Go to Product page](#)**1** Image

## Overview

Quantity:	100 µL
Target:	PLA2G6
Binding Specificity:	AA 651-750
Reactivity:	Rat
Host:	Rabbit
Clonality:	Polyclonal
Conjugate:	This PLA2G6 antibody is un-conjugated
Application:	Western Blotting (WB), ELISA, Immunofluorescence (Cultured Cells) (IF (cc)), Immunofluorescence (Paraffin-embedded Sections) (IF (p)), Immunohistochemistry (Paraffin- embedded Sections) (IHC (p)), Immunohistochemistry (Frozen Sections) (IHC (fro))

## Product Details

Immunogen:	KLH conjugated synthetic peptide derived from human Cal-PLA2/PLA2G6
Isotype:	IgG
Cross-Reactivity:	Rat
Predicted Reactivity:	Human,Mouse,Dog,Pig
Purification:	Purified by Protein A.

## Target Details

Target:	PLA2G6
---------	--------

## Target Details

Alternative Name:	Cal-PLA2 ( <a href="#">PLA2G6 Products</a> )
Background:	<p>Synonyms: GVI, PLA2, INAD1, NBIA2, iPLA2, NBIA2A, NBIA2B, PARK14, PNPLA9, Cal-PLA2, IPLA2-VIA, iPLA2beta, 85/88 kDa calcium-independent phospholipase A2, Group VI phospholipase A2, GVI PLA2, Intracellular membrane-associated calcium-independent phospholipase A2 beta, iPLA2-beta, Patatin-like phospholipase domain-containing protein 9, PLA2G6, PLPLA9</p> <p>Background: Catalyzes the release of fatty acids from phospholipids. It has been implicated in normal phospholipid remodeling, nitric oxide-induced or vasopressin-induced arachidonic acid release and in leukotriene and prostaglandin production. May participate in fas mediated apoptosis and in regulating transmembrane ion flux in glucose-stimulated B-cells. Has a role in cardiolipin (CL) deacylation. Required for both speed and directionality of monocyte MCP1/CCL2-induced chemotaxis through regulation of F-actin polymerization at the pseudopods. Isoform ankyrin-iPLA2-1 and isoform ankyrin-iPLA2-2, which lack the catalytic domain, are probably involved in the negative regulation of iPLA2 activity.</p>
Gene ID:	8398
UniProt:	<a href="#">O60733</a>
Pathways:	<a href="#">Positive Regulation of Peptide Hormone Secretion</a>

## Application Details

Application Notes:	WB 1:300-5000 ELISA 1:500-1000 IHC-P 1:200-400 IHC-F 1:100-500 IF(IHC-P) 1:50-200 IF(IHC-F) 1:50-200 IF(ICC) 1:50-200
Restrictions:	For Research Use only

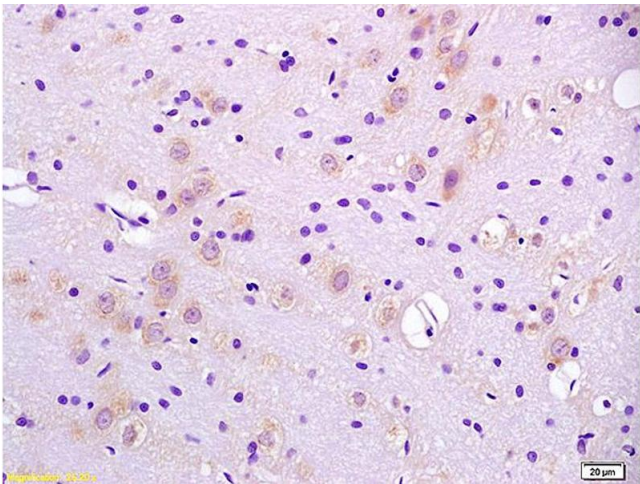
## Handling

Format:	Liquid
Concentration:	1 µg/µL
Buffer:	0.01M TBS( pH 7.4) with 1 % BSA, 0.02 % Proclin300 and 50 % Glycerol.

Handling

Preservative:	ProClin
Precaution of Use:	This product contains ProClin: a POISONOUS AND HAZARDOUS SUBSTANCE, which should be handled by trained staff only.
Storage:	4 °C,-20 °C
Storage Comment:	Shipped at 4°C. Store at -20°C for one year. Avoid repeated freeze/thaw cycles.
Expiry Date:	12 months

Images



Immunohistochemistry

**Image 1.** Formalin-fixed and paraffin embedded rat brain labeled with Anti-CalPLA2/PLA2G6 Polyclonal Antibody, Unconjugated (ABIN720281) at 1:200 followed by conjugation to the secondary antibody and DAB staining.