

Datasheet for ABIN720296  
**anti-LRRC4C antibody (AA 561-640)**[Go to Product page](#)

## 2 Images

## Overview

Quantity:	100 µL
Target:	LRRC4C
Binding Specificity:	AA 561-640
Reactivity:	Human, Mouse, Rat
Host:	Rabbit
Clonality:	Polyclonal
Conjugate:	This LRRC4C antibody is un-conjugated
Application:	Western Blotting (WB), ELISA, Immunofluorescence (Cultured Cells) (IF (cc)), Immunofluorescence (Paraffin-embedded Sections) (IF (p)), Immunohistochemistry (Paraffin- embedded Sections) (IHC (p)), Immunohistochemistry (Frozen Sections) (IHC (fro))

## Product Details

Immunogen:	KLH conjugated synthetic peptide derived from human Netrin G1 ligand
Isotype:	IgG
Cross-Reactivity:	Human, Mouse, Rat
Predicted Reactivity:	Dog,Cow,Horse,Rabbit
Purification:	Purified by Protein A.

## Target Details

Target:	LRRC4C
---------	--------

## Target Details

Alternative Name:	Netrin G1 ligand ( <a href="#">LRRC4C Products</a> )
Background:	<p>Synonyms: Leucine rich repeat containing 4C, Leucine-rich repeat-containing protein 4C, LRC4C_HUMAN, Lrrc4C, Netrin-G1 ligand, NGL 1, NGL-1, NGL1.</p> <p>Background: NGL-1 is a single pass type I membrane protein that acts as a cell adhesion molecule. It contains nine leucine-rich repeats (LRR) and one Ig-like C2-type domain. NGL-1 is predominantly expressed in the striatum and the cerebral cortex of both the embryonic and adult brain. NGL-1 specifically interacts with Netrin G1 (a molecule involved in axon guidance in the developing central nervous system) via its LRR region. NGL-1 plays a role in the regulation of neurite outgrowth of developing thalamic neurons. Soluble NGL-1 inhibits thalamic axon outgrowth while NGL-1 that is bound to the surface of developing thalamocortical axons stimulates growth. NGL-1 also interacts with Whirlin possibly stabilizing interstereociliar links.</p>
Gene ID:	22854
Pathways:	<a href="#">Synaptic Membrane</a>

## Application Details

Application Notes:	WB 1:300-5000 ELISA 1:500-1000 IHC-P 1:200-400 IHC-F 1:100-500 IF(IHC-P) 1:50-200 IF(IHC-F) 1:50-200 IF(ICC) 1:50-200
Restrictions:	For Research Use only

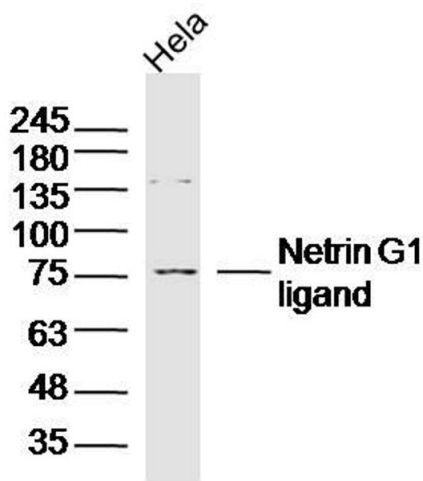
## Handling

Format:	Liquid
Concentration:	1 µg/µL
Buffer:	0.01M TBS( pH 7.4) with 1 % BSA, 0.02 % Proclin300 and 50 % Glycerol.
Preservative:	ProClin
Precaution of Use:	This product contains ProClin: a POISONOUS AND HAZARDOUS SUBSTANCE, which should be handled by trained staff only.
Storage:	4 °C,-20 °C

Handling

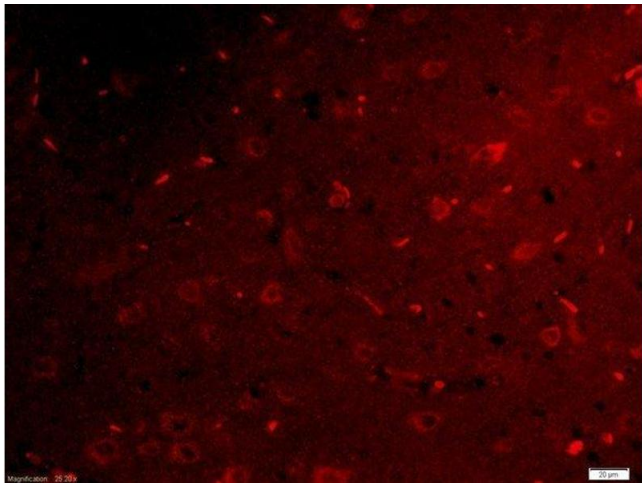
Storage Comment:	Shipped at 4°C. Store at -20°C for one year. Avoid repeated freeze/thaw cycles.
Expiry Date:	12 months

Images



Western Blotting

**Image 1.** HeLa lysates probed with Netrin G1 ligand Polyclonal Antibody, Unconjugated at 1:300 dilution and 4°C overnight incubation. Followed by conjugated secondary antibody incubation at 1:10000 for 60 min at 37°C.



Immunofluorescence (Paraffin-embedded Sections)

**Image 2.** Formalin-fixed and paraffin embedded rat brain tissue labeled with Rabbit Anti-Netrin G1 Ligand Polyclonal Antibody, Unconjugated used at 1:200 dilution for 40 minutes at 37°C.