

Datasheet for ABIN7203627
anti-EGF antibody (AA 1000-1060)



[Go to Product page](#)

4 Images

Overview

Quantity:	100 µL
Target:	EGF
Binding Specificity:	AA 1000-1060
Reactivity:	Human
Host:	Rabbit
Clonality:	Polyclonal
Conjugate:	This EGF antibody is un-conjugated
Application:	Western Blotting (WB), ELISA, Immunohistochemistry (Paraffin-embedded Sections) (IHC (p))

Product Details

Purpose:	EGF Polyclonal Antibody
Immunogen:	Synthesized peptide derived from part region of human EGF protein at AA range: 1000-1060
Isotype:	IgG
Specificity:	The antibody detects endogenous levels of EGF
Purification:	The antibody was affinity-purified from rabbit serum by affinity-chromatography using specific immunogen

Target Details

Target:	EGF
Alternative Name:	EGF (EGF Products)

Target Details

Background: Rabbit Anti-EGF Polyclonal Antibody, Pro-epidermal growth factor, EGF, Epidermal growth factor, Urogastrone, EGF encodes a member of the epidermal growth factor superfamily. The encoded preproprotein is proteolytically processed to generate the 53-amino acid epidermal growth factor peptide. This protein acts as a potent mitogenic factor that plays an important role in the growth, proliferation and differentiation of numerous cell types. This protein acts by binding with high affinity to the cell surface receptor, epidermal growth factor receptor. Defects in EGF are the cause of hypomagnesemia type 4. Dysregulation of EGF has been associated with the growth and progression of certain cancers. Alternative splicing results in multiple transcript variants, at least one of which encodes a preproprotein that is proteolytically processed. EGF

Gene ID: 1950

UniProt: P01133

Pathways: [NF-kappaB Signaling](#), [RTK Signaling](#), [Fc-epsilon Receptor Signaling Pathway](#), [EGFR Signaling Pathway](#), [Neurotrophin Signaling Pathway](#), [Regulation of Carbohydrate Metabolic Process](#), [Hepatitis C](#), [Protein targeting to Nucleus](#), [Interaction of EGFR with phospholipase C-gamma](#), [Thromboxane A2 Receptor Signaling](#), [EGFR Downregulation](#)

Application Details

Application Notes: Optimal working dilutions should be determined experimentally by the investigator. Suggested starting dilutions are as follows: WB (1:500-1:2000), IHC-P (1:200-1:500), ELISA (1:10000-1:20000).

Restrictions: For Research Use only

Handling

Format: Liquid

Concentration: 1 mg/mL

Buffer: PBS, pH 7.4, containing 0.02 % Sodium Azide as preservative and 50 % Glycerol as stabilizer.

Preservative: Sodium azide

Precaution of Use: This product contains Sodium azide: a POISONOUS AND HAZARDOUS SUBSTANCE which should be handled by trained staff only.

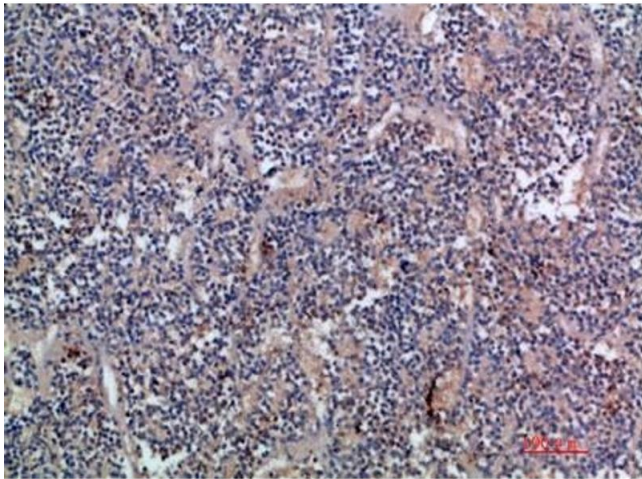
Storage: -20 °C

Handling

Storage Comment:

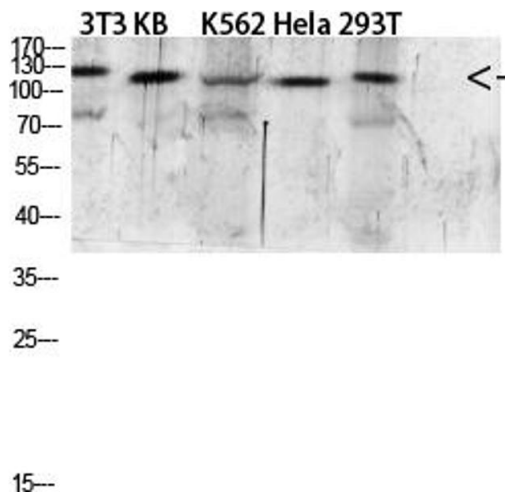
Stable for one year at -20°C from date of shipment. For maximum recovery of product, centrifuge the original vial after thawing and prior to removing the cap. Aliquot to avoid repeated freezing and thawing.

Images



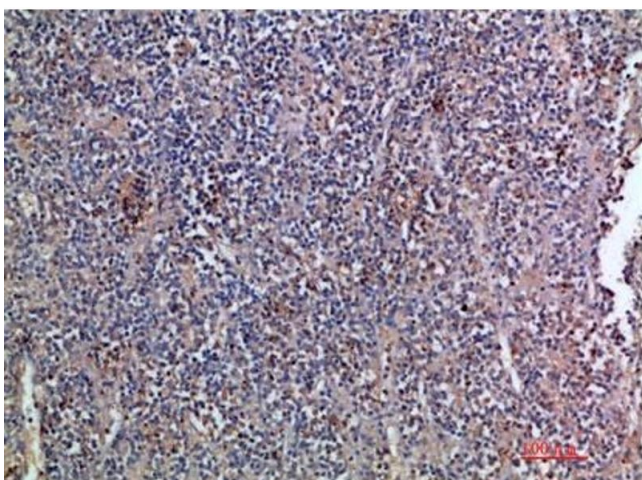
Immunohistochemistry

Image 1. Immunohistochemical analysis of paraffin-embedded human-kidney-cancer, antibody was diluted at 1:200.



Western Blotting

Image 2. Western blot analysis of 293T Mouse-kidney lysate, antibody was diluted at 1:2000. HRP, Goat Anti-Rabbit IgG (ABIN7205155) secondary antibody was diluted at 1:20000.



Immunohistochemistry

Image 3. Immunohistochemical analysis of paraffin-embedded human-kidney-cancer, antibody was diluted at 1:200.

Please check the [product details page](#) for more images. Overall 4 images are available for ABIN7203627.