



[Go to Product page](#)

Datasheet for ABIN7203941  
**anti-Fibronectin antibody**

5 Images

### Overview

Quantity:	100 µL
Target:	Fibronectin
Reactivity:	Human, Rat, Mouse
Host:	Mouse
Clonality:	Monoclonal
Conjugate:	This Fibronectin antibody is un-conjugated
Application:	Western Blotting (WB), Immunofluorescence (IF), Immunohistochemistry (Paraffin-embedded Sections) (IHC (p))

### Product Details

Purpose:	Fibronectin Monoclonal Antibody
Immunogen:	Synthetic Peptide
Isotype:	IgG1
Specificity:	The antibody detects endogenous Fibronectin protein.
Purification:	The antibody was affinity-purified from mouse ascites by affinity-chromatography using specific immunogen

### Target Details

Target:	Fibronectin
Abstract:	<a href="#">Fibronectin Products</a>

## Target Details

---

**Background:** Mouse Anti-Fibronectin Monoclonal Antibody, FN1, FN, Fibronectin, FN, Cold-insoluble globulin, CIG, FN1 encodes fibronectin, a glycoprotein present in a soluble dimeric form in plasma, and in a dimeric or multimeric form at the cell surface and in extracellular matrix. The encoded preproprotein is proteolytically processed to generate the mature protein. Fibronectin is involved in cell adhesion and migration processes including embryogenesis, wound healing, blood coagulation, host defense, and metastasis. FN1 has three regions subject to alternative splicing, with the potential to produce 20 different transcript variants, at least one of which encodes an isoform that undergoes proteolytic processing. The full-length nature of some variants has not been determined., Fibronectin

---

**Gene ID:** 2335

---

**UniProt:** [P02751](#)

---

## Application Details

---

**Application Notes:** Optimal working dilutions should be determined experimentally by the investigator. Suggested starting dilutions are as follows: WB (1:1000-1:3000), IF (1:100-1:200), IHC-P (1:50-1:300).

---

**Restrictions:** For Research Use only

---

## Handling

---

**Format:** Liquid

---

**Concentration:** 1 mg/mL

---

**Buffer:** PBS, pH 7.4, containing 0.02 % Sodium Azide as preservative and 50 % Glycerol.

---

**Preservative:** Sodium azide

---

**Precaution of Use:** This product contains Sodium azide: a POISONOUS AND HAZARDOUS SUBSTANCE which should be handled by trained staff only.

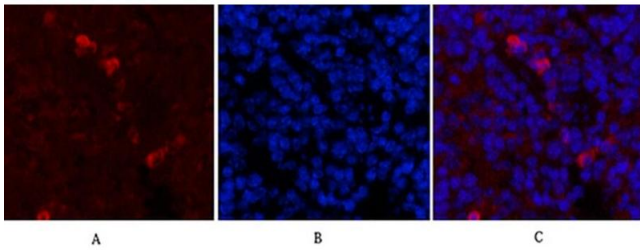
---

**Storage:** -20 °C

---

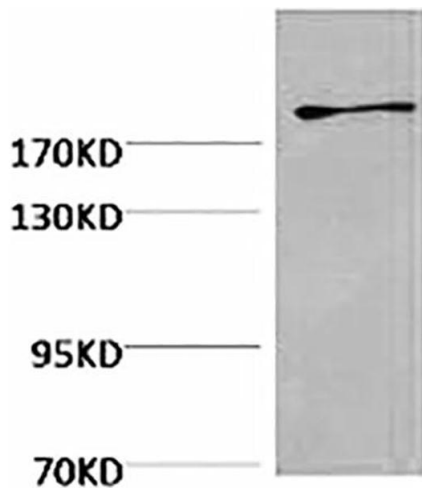
**Storage Comment:** Stable for one year at -20°C from date of shipment. For maximum recovery of product, centrifuge the original vial after thawing and prior to removing the cap. Aliquot to avoid repeated freezing and thawing.

---



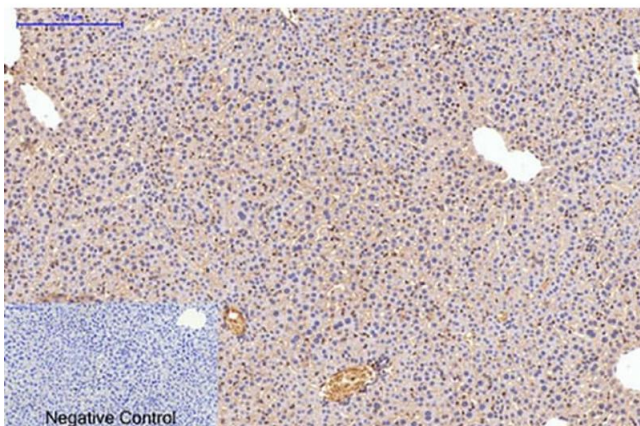
### Immunofluorescence

**Image 1.** Immunofluorescence analysis of mouse spleen tissue. 1, Fibronectin Monoclonal Antibody (red) was diluted at 1:200 (4 °C, overnight). 2, Cy3 Labeled secondary antibody was diluted at 1:300 (room temperature, 50 min). 3, Picture B: DAPI (blue) 10 min. Picture A: Target. Picture B: DAPI. Picture C: merge of A+B.



### Western Blotting

**Image 2.** Western blot analysis of Hela, diluted at 1:2000.



### Immunohistochemistry

**Image 3.** Immunohistochemical analysis of paraffin-embedded mouse liver tissue. 1, Fibronectin Monoclonal Antibody was diluted at 1:200 (4 °C, overnight). 2, Sodium citrate pH 6.0 was used for antibody retrieval (>98 °C, 20 min). 3, secondary antibody was diluted at 1:200 (room temperature, 30 min). Negative control was used by secondary antibody only.

Please check the [product details page](#) for more images. Overall 5 images are available for ABIN7203941.