

Datasheet for ABIN7204047
anti-FOXP3 antibody (C-Term)



[Go to Product page](#)

6 Images

Overview

Quantity:	100 µL
Target:	FOXP3
Binding Specificity:	C-Term
Reactivity:	Human, Mouse, Rat
Host:	Rabbit
Clonality:	Polyclonal
Conjugate:	This FOXP3 antibody is un-conjugated
Application:	Western Blotting (WB), ELISA, Immunohistochemistry (Paraffin-embedded Sections) (IHC (p))

Product Details

Purpose:	FOXP3 Polyclonal Antibody
Immunogen:	Synthesized peptide derived from the C-terminal region of human FOXP3
Isotype:	IgG
Specificity:	FOXP3 Polyclonal Antibody detects endogenous levels of FOXP3 protein.
Purification:	The antibody was affinity-purified from rabbit antiserum by affinity-chromatography using epitope-specific immunogen

Target Details

Target:	FOXP3
Alternative Name:	FOXP3 (FOXP3 Products)

Target Details

Background: Rabbit Anti-FOXP3 Polyclonal Antibody, FOXP3, IPEX, JM2, Forkhead box protein P3, Scurfin, Forkhead box protein P3 encoded by FOXP3 is a member of the forkhead/winged-helix family of transcriptional regulators. Defects in this gene are the cause of immunodeficiency polyendocrinopathy, enteropathy, X-linked syndrome (IPEX), also known as X-linked autoimmunity-immunodeficiency syndrome. Alternatively spliced transcript variants encoding different isoforms have been identified., Forkhead box protein P3

Gene ID: 50943

UniProt: [Q9BZS1](#)

Pathways: [Chromatin Binding](#), [Regulation of Leukocyte Mediated Immunity](#), [Positive Regulation of Immune Effector Process](#), [Production of Molecular Mediator of Immune Response](#), [Activated T Cell Proliferation](#)

Application Details

Application Notes: Optimal working dilutions should be determined experimentally by the investigator. Suggested starting dilutions are as follows: WB (1:500-1:2000), IHC-P (1:100-1:300), ELISA (1:20000). Not yet tested in other applications.

Restrictions: For Research Use only

Handling

Format: Liquid

Concentration: 1 mg/mL

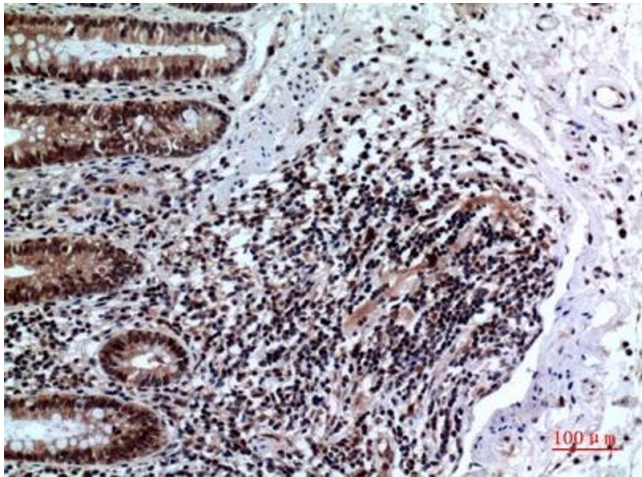
Buffer: PBS containing 50 % Glycerol, 0.5 % BSA and 0.02 % Sodium Azide.

Preservative: Sodium azide

Precaution of Use: This product contains Sodium azide: a POISONOUS AND HAZARDOUS SUBSTANCE which should be handled by trained staff only.

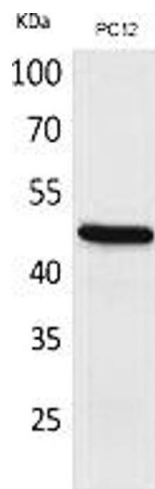
Storage: -20 °C

Storage Comment: Stable for one year at -20°C from date of shipment. For maximum recovery of product, centrifuge the original vial after thawing and prior to removing the cap. Aliquot to avoid repeated freezing and thawing.



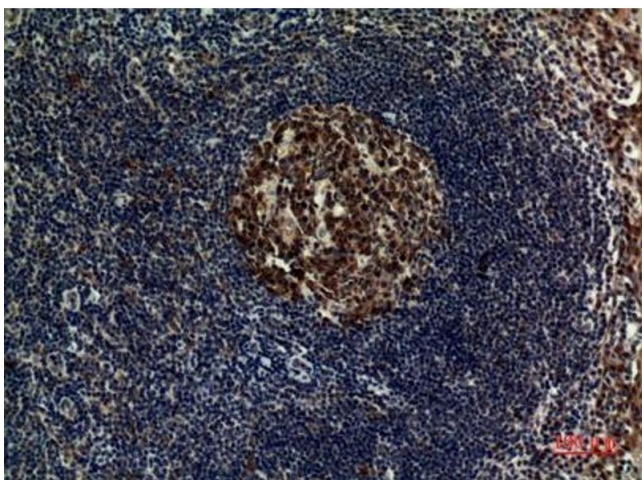
Immunohistochemistry

Image 1. Immunohistochemical analysis of paraffin-embedded human-colon, antibody was diluted at 1:100.



Western Blotting

Image 2. Western Blot analysis of PC12 cells using FOXP3 Polyclonal Antibody. Secondary antibody (ABIN7205155) was diluted at 1:20000.



Immunohistochemistry

Image 3. Immunohistochemical analysis of paraffin-embedded human-tonsilla, antibody was diluted at 1:100.

Please check the [product details page](#) for more images. Overall 6 images are available for ABIN7204047.