

Datasheet for ABIN720430  
**anti-LGI1 antibody (AA 451-557)**

## 3 Images

[Go to Product page](#)

## Overview

Quantity:	100 µL
Target:	LGI1
Binding Specificity:	AA 451-557
Reactivity:	Mouse, Rat
Host:	Rabbit
Clonality:	Polyclonal
Conjugate:	This LGI1 antibody is un-conjugated
Application:	Western Blotting (WB), ELISA, Immunohistochemistry (Paraffin-embedded Sections) (IHC (p)), Immunofluorescence (Cultured Cells) (IF (cc)), Immunofluorescence (Paraffin-embedded Sections) (IF (p)), Immunohistochemistry (Frozen Sections) (IHC (fro))

## Product Details

Immunogen:	KLH conjugated synthetic peptide derived from human LGI1
Isotype:	IgG
Cross-Reactivity:	Mouse, Rat
Predicted Reactivity:	Human,Dog,Cow,Pig,Horse,Rabbit
Purification:	Purified by Protein A.

## Target Details

Target:	LGI1
---------	------

## Target Details

Alternative Name:	LGI1 ( <a href="#">LGI1 Products</a> )
Background:	<p>Synonyms: EPT, ETL1, ADLTE, ADPAEF, ADPEAF, IB1099, EPITEMPIN, Leucine-rich glioma-inactivated protein 1, Epitempin-1, LGI1, UNQ775/PRO1569</p> <p>Background: Regulates voltage-gated potassium channels assembled from KCNA1, KCNA4 and KCNAB1. It slows down channel inactivation by precluding channel closure mediated by the KCNAB1 subunit. Ligand for ADAM22 that positively regulates synaptic transmission mediated by AMPA-type glutamate receptors (By similarity). Plays a role in suppressing the production of MMP1/3 through the phosphatidylinositol 3-kinase/ERK pathway. May play a role in the control of neuroblastoma cell survival.</p>

Gene ID: 9211

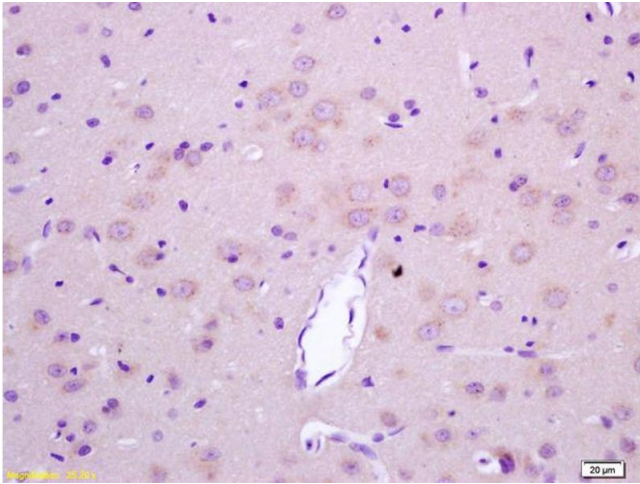
UniProt: [O95970](#)

## Application Details

Application Notes:	WB 1:300-5000 ELISA 1:500-1000 IHC-P 1:200-400 IHC-F 1:100-500 IF(IHC-P) 1:50-200 IF(IHC-F) 1:50-200 IF(ICC) 1:50-200
Restrictions:	For Research Use only

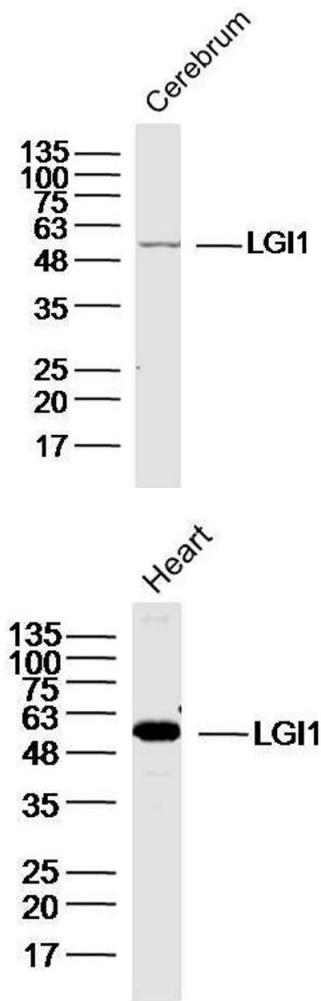
## Handling

Format:	Liquid
Concentration:	1 µg/µL
Buffer:	0.01M TBS( pH 7.4) with 1 % BSA, 0.02 % Proclin300 and 50 % Glycerol.
Preservative:	ProClin
Precaution of Use:	This product contains ProClin: a POISONOUS AND HAZARDOUS SUBSTANCE, which should be handled by trained staff only.
Storage:	4 °C,-20 °C
Storage Comment:	Shipped at 4°C. Store at -20°C for one year. Avoid repeated freeze/thaw cycles.



Immunohistochemistry

**Image 1.** Formalin-fixed and paraffin embedded rat brain labeled with Rabbit Anti LGI1/ETL1 Polyclonal Antibody, Unconjugated (ABIN720430) at 1:200 followed by conjugation to the secondary antibody and DAB staining



Western Blotting

**Image 2.** Mouse cerebrum lysates probed with LGI1 Polyclonal Antibody, unconjugated at 1:300 overnight at 4°C followed by a conjugated secondary antibody at 1:10000 for 90 minutes at 37°C.

Western Blotting

**Image 3.** Mouse heart lysates probed with GI1 Polyclonal Antibody, unconjugated at 1:300 overnight at 4°C followed by a conjugated secondary antibody for 60 minutes at 37°C.