

Datasheet for ABIN720460
anti-KIRREL2 antibody (AA 165-260)[Go to Product page](#)

3 Images

Overview

Quantity:	100 µL
Target:	KIRREL2
Binding Specificity:	AA 165-260
Reactivity:	Rat
Host:	Rabbit
Clonality:	Polyclonal
Conjugate:	This KIRREL2 antibody is un-conjugated
Application:	Western Blotting (WB), ELISA, Immunofluorescence (Cultured Cells) (IF (cc)), Immunofluorescence (Paraffin-embedded Sections) (IF (p)), Immunohistochemistry (Paraffin- embedded Sections) (IHC (p)), Immunohistochemistry (Frozen Sections) (IHC (fro)), Immunocytochemistry (ICC)

Product Details

Immunogen:	KLH conjugated synthetic peptide derived from human NLG1/KIRREL2
Isotype:	IgG
Cross-Reactivity:	Rat
Predicted Reactivity:	Human,Mouse
Purification:	Purified by Protein A.

Target Details

Target:	KIRREL2
---------	---------

Target Details

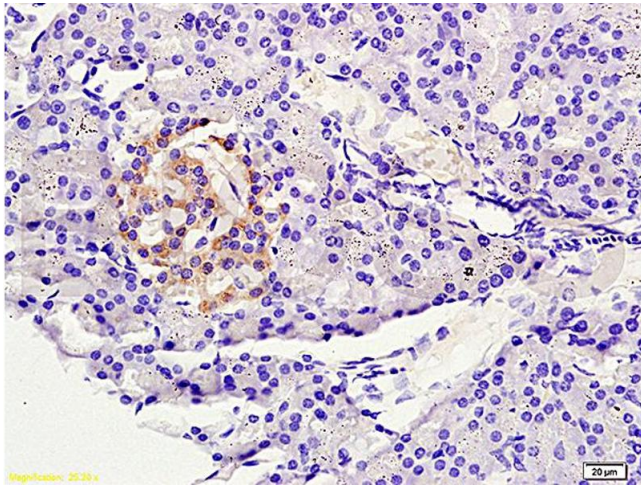
Alternative Name:	KIRREL2 (KIRREL2 Products)
Background:	<p>Synonyms: NLG1, NEPH3, FILTRIN, Kin of IRRE-like protein 2, Kin of irregular chiasm-like protein 2, Nephrin-like protein 3, KIRREL2, UNQ5827/PRO19646</p> <p>Background: KIRREL2 is an immunoglobulin super family gene, it has been found to be expressed in beta cells of pancreatic islets, KIRREL2_HUMAN.</p>
Gene ID:	84063
UniProt:	Q6UWL6

Application Details

Application Notes:	<p>WB 1:300-5000</p> <p>ELISA 1:500-1000</p> <p>IHC-P 1:200-400</p> <p>IHC-F 1:100-500</p> <p>IF(IHC-P) 1:50-200</p> <p>IF(IHC-F) 1:50-200</p> <p>IF(ICC) 1:50-200</p> <p>ICC 1:100-500</p>
Restrictions:	For Research Use only

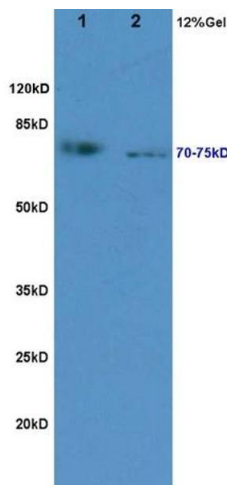
Handling

Format:	Liquid
Concentration:	1 µg/µL
Buffer:	0.01M TBS(pH 7.4) with 1 % BSA, 0.02 % Proclin300 and 50 % Glycerol.
Preservative:	ProClin
Precaution of Use:	This product contains ProClin: a POISONOUS AND HAZARDOUS SUBSTANCE, which should be handled by trained staff only.
Storage:	4 °C,-20 °C
Storage Comment:	Shipped at 4°C. Store at -20°C for one year. Avoid repeated freeze/thaw cycles.
Expiry Date:	12 months



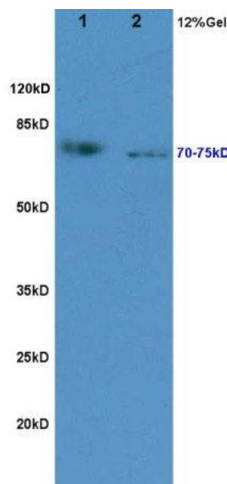
Immunohistochemistry

Image 1. Formalin-fixed and paraffin embedded rat pancreas tissue labeled with Anti-NLG1/KIRREL2 Polyclonal Antibody, Unconjugated (ABIN720460) at 1:200 followed by conjugation to the secondary antibody and DAB staining



SDS-PAGE

Image 2. L1 rat kidney lysates L2 rat pancreas lysates probed with Anti NLG1/KIRREL2 Polyclonal Antibody, Unconjugated (ABIN720460) at 1:200 in 4 °C. Followed by conjugation to secondary antibody at 1:3000 90min in 37 °C. Predicted band 75kD. Observed band size: 75kD



Western Blotting

Image 3. Formalin-fixed and paraffin embedded rat pancreas tissue labeled with Anti-NLG1/KIRREL2 Polyclonal Antibody, Unconjugated at 1:200 followed by conjugation to the secondary antibody and DAB staining