



[Go to Product page](#)

Datasheet for ABIN720550

## anti-CAMK4 antibody (pThr196, pThr200)

### 1 Image

#### Overview

Quantity:	100 µL
Target:	CAMK4
Binding Specificity:	pThr196, pThr200
Reactivity:	Human, Mouse, Rat
Host:	Rabbit
Clonality:	Polyclonal
Conjugate:	This CAMK4 antibody is un-conjugated
Application:	Western Blotting (WB), ELISA, Immunohistochemistry (Paraffin-embedded Sections) (IHC (p)), Immunofluorescence (Cultured Cells) (IF (cc)), Immunofluorescence (Paraffin-embedded Sections) (IF (p)), Immunohistochemistry (Frozen Sections) (IHC (fro))

#### Product Details

Immunogen:	KLH conjugated synthetic phosphopeptide derived from mouse CAMKIV around the phosphorylation site of Thr196 + Thr200.
Isotype:	IgG
Specificity:	Phosphorylation site corresponds to Thr200 and Thr204 in human.
Predicted Reactivity:	Human, Mouse, Rat, Dog, Cow, Pig
Purification:	Purified by Protein A.

#### Target Details

Target:	CAMK4
---------	-------

## Target Details

---

Alternative Name: [Camk4 \(CAMK4 Products\)](#)

---

Background: Synonyms: CAMKIVphospho T196 + T200, Brain Ca<sup>2+</sup> calmodulin dependent protein kinase type 4, Brain Ca<sup>2+</sup> calmodulin dependent protein kinase type IV, Calcium / calmodulin dependent protein kinase type 4 catalytic chain, Calcium / calmodulin dependent protein kinase type IV catalytic chain, Calcium/calmodulin dependent protein kinase IV, Calcium/calmodulin dependent protein kinase type IV, CAM kinase 4, CAM kinase GR, CAM kinase IV, CaMK 4, CAMK GR, CaMK IV, CaMK4, CaMKGR, MGC36771.

Background: Ca<sup>2+</sup>/calmodulin dependent protein kinase type IV (CAMKIV) belongs to the serine/threonine protein kinase family, and to the Ca(2+)/calmodulin-dependent protein kinase subfamily. This enzyme is a multifunctional serine/threonine protein kinase with limited tissue distribution, that has been implicated in transcriptional regulation in lymphocytes, neurons and male germ cells.

---

UniProt: [P08414](#)

---

Pathways: [EGFR Signaling Pathway](#), [Neurotrophin Signaling Pathway](#), [Production of Molecular Mediator of Immune Response](#), [G-protein mediated Events](#), [Interaction of EGFR with phospholipase C-gamma](#)

---

## Application Details

---

Application Notes: WB 1:100-1000  
IHC-P 1:100-500  
IF(IHC-P) 1:50-200

---

Restrictions: For Research Use only

---

## Handling

---

Format: Liquid

---

Concentration: 1 µg/µL

---

Buffer: 0.01M TBS( pH 7.4) with 1 % BSA, 0.02 % Proclin300 and 50 % Glycerol.

---

Preservative: Sodium azide

---

Precaution of Use: This product contains Sodium azide: a POISONOUS AND HAZARDOUS SUBSTANCE, which should be handled by trained staff only.

---

Storage: 4 °C, -20 °C

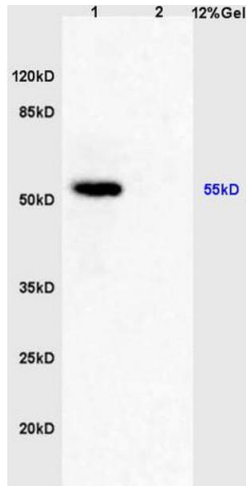
---

## Handling

Storage Comment: Shipped at 4°C. Store at -20°C for one year. Avoid repeated freeze/thaw cycles.

Expiry Date: 12 months

## Images



### SDS-PAGE

**Image 1.** Lane 1: rat brain lysates Lane 2: rat liver lysates probed with Anti phospho-CAMK4(Thr196 + Thr200) Polyclonal Antibody, Unconjugated (ABIN720550) at 1:200 in 4 °C. Followed by conjugation to secondary antibody at 1:3000 90min in 37 °C. Predicted band 55kD. Observed band size: 55kD.