

Datasheet for ABIN7205612
anti-JAK1 antibody (pTyr1022)



[Go to Product page](#)

4 Images

Overview

Quantity:	100 µL
Target:	JAK1
Binding Specificity:	pTyr1022
Reactivity:	Human, Mouse, Rat
Host:	Rabbit
Clonality:	Polyclonal
Conjugate:	This JAK1 antibody is un-conjugated
Application:	Western Blotting (WB), ELISA, Immunofluorescence (IF), Immunohistochemistry (Paraffin-embedded Sections) (IHC (p))

Product Details

Purpose:	JAK1 (phospho Tyr1022) Polyclonal Antibody
Immunogen:	Synthesized peptide derived from human JAK1 Phospho-Tyr1022
Isotype:	IgG
Specificity:	Phospho-JAK1 (Y1022) Polyclonal Antibody detects endogenous levels of JAK1 protein only when phosphorylated at Y1022.
Purification:	The antibody was affinity-purified from rabbit antiserum by affinity-chromatography using epitope-specific immunogen

Target Details

Target:	JAK1
---------	------

Target Details

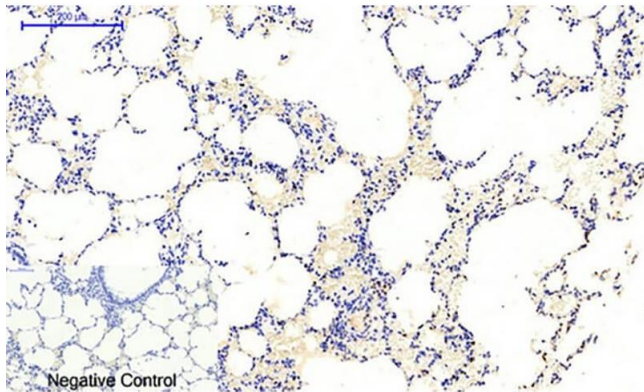
Alternative Name:	JAK1 (JAK1 Products)
Background:	Rabbit Anti-JAK1 (phospho Tyr1022) Polyclonal Antibody, JAK1, JAK1A, JAK1B, Tyrosine-protein kinase JAK1, Janus kinase 1, JAK-1, JAK1 encodes a membrane protein that is a member of a class of protein-tyrosine kinases (PTK) characterized by the presence of a second phosphotransferase-related domain immediately N-terminal to the PTK domain. The encoded kinase (Janus kinase 1) phosphorylates STAT proteins (signal transducers and activators of transcription) and plays a key role in interferon-alpha/beta and interferon-gamma signal transduction. Alternative splicing results in multiple transcript variants., Tyrosine-protein kinase JAK1
Gene ID:	3716
UniProt:	P23458
Pathways:	JAK-STAT Signaling , RTK Signaling , Interferon-gamma Pathway , Hepatitis C , Toll-Like Receptors Cascades , Unfolded Protein Response

Application Details

Application Notes:	Optimal working dilutions should be determined experimentally by the investigator. Suggested starting dilutions are as follows: WB (1:500-1:2000), IF (1:50-1:200), IHC-P (1:100-1:300), ELISA (1:10000). Not yet tested in other applications.
Restrictions:	For Research Use only

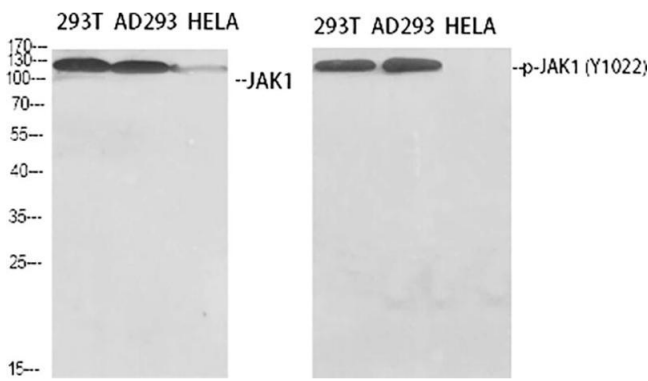
Handling

Format:	Liquid
Concentration:	1 mg/mL
Buffer:	PBS containing 50 % Glycerol, 0.5 % BSA and 0.02 % Sodium Azide.
Preservative:	Sodium azide
Precaution of Use:	This product contains Sodium azide: a POISONOUS AND HAZARDOUS SUBSTANCE which should be handled by trained staff only.
Storage:	-20 °C
Storage Comment:	Stable for one year at -20°C from date of shipment. For maximum recovery of product, centrifuge the original vial after thawing and prior to removing the cap. Aliquot to avoid repeated freezing and thawing.



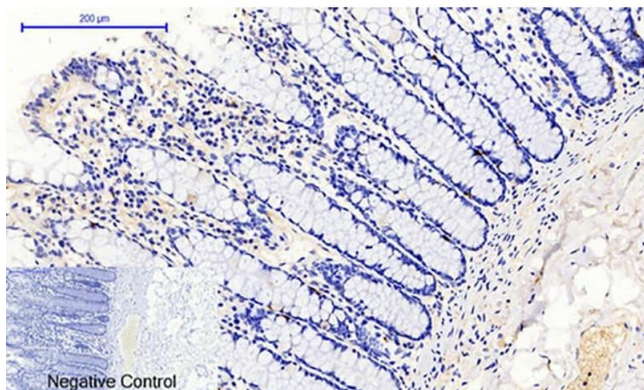
Immunohistochemistry

Image 1. Immunohistochemical analysis of paraffin-embedded rat lung tissue. 1, JAK1 (phospho Tyr1022) Polyclonal Antibody was diluted at 1:200 (4 °C, overnight). 2, Sodium citrate pH 6.0 was used for antibody retrieval (>98 °C, 20 min). 3, secondary antibody was diluted at 1:200 (room temperature, 30 min). Negative control was used by secondary antibody only.



Western Blotting

Image 2. Western Blot analysis of 293T (1), AD293 (2), Hela (3), diluted at 1:500.



Immunohistochemistry

Image 3. Immunohistochemical analysis of paraffin-embedded human colon tissue. 1, JAK1 (phospho Tyr1022) Polyclonal Antibody was diluted at 1:200 (4 °C, overnight). 2, Sodium citrate pH 6.0 was used for antibody retrieval (>98 °C, 20 min). 3, secondary antibody was diluted at 1:200 (room temperature, 30 min). Negative control was used by secondary antibody only.

Please check the [product details page](#) for more images. Overall 4 images are available for ABIN7205612.