

Datasheet for ABIN720565  
**anti-UBP1 antibody (AA 351-450)**[Go to Product page](#)

## 2 Images

## Overview

Quantity:	100 µL
Target:	UBP1
Binding Specificity:	AA 351-450
Reactivity:	Human, Mouse
Host:	Rabbit
Clonality:	Polyclonal
Conjugate:	This UBP1 antibody is un-conjugated
Application:	Western Blotting (WB), ELISA, Immunofluorescence (Cultured Cells) (IF (cc)), Immunofluorescence (Paraffin-embedded Sections) (IF (p)), Immunohistochemistry (Paraffin- embedded Sections) (IHC (p)), Immunohistochemistry (Frozen Sections) (IHC (fro))

## Product Details

Immunogen:	KLH conjugated synthetic peptide derived from human Upstream Binding Protein 1
Isotype:	IgG
Cross-Reactivity:	Human, Mouse
Predicted Reactivity:	Rat,Dog,Cow,Pig,Horse,Chicken
Purification:	Purified by Protein A.

## Target Details

Target:	UBP1
---------	------

## Target Details

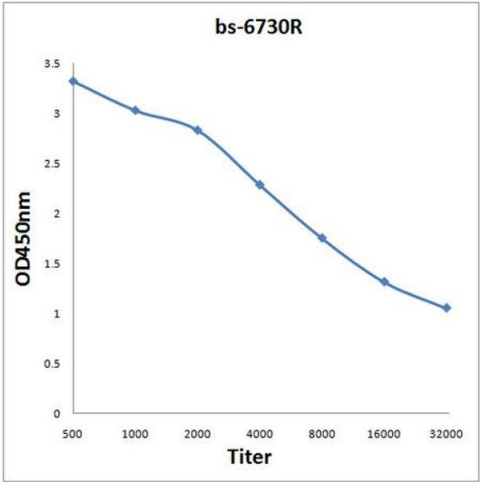
Alternative Name:	Upstream Binding Protein 1 ( <a href="#">UBP1 Products</a> )
Background:	<p>Synonyms: LBP 1a, Cp2b, DKFZp686L1745, LBP 1a, LBP 1B, LBP1, LBP1A, LBP1B, NF2d9, Upstream binding protein 1, Transcription factor LBP-1, UBIP1_HUMAN.</p> <p>Background: Functions as a transcriptional activator in a promoter context-dependent manner. Modulates the placental expression of CYP11A1. Involved in regulation of the alpha-globin gene in erythroid cells. Activation of the alpha-globin promoter in erythroid cells is via synergistic interaction with TFCEP2 (By similarity). Involved in regulation of the alpha-globin gene in erythroid cells. Binds strongly to sequences around the HIV-1 initiation site and weakly over the TATA-box. Represses HIV-1 transcription by inhibiting the binding of TFIID to the TATA-box.</p>
Gene ID:	7342

## Application Details

Application Notes:	<p>WB 1:300-5000</p> <p>ELISA 1:500-1000</p> <p>IHC-P 1:200-400</p> <p>IHC-F 1:100-500</p> <p>IF(IHC-P) 1:50-200</p> <p>IF(IHC-F) 1:50-200</p> <p>IF(ICC) 1:50-200</p>
Restrictions:	For Research Use only

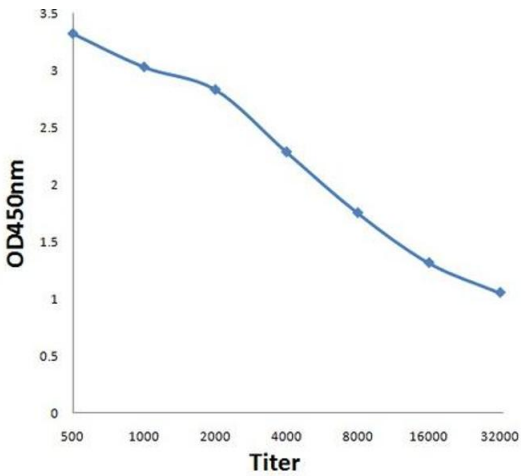
## Handling

Format:	Liquid
Concentration:	1 µg/µL
Buffer:	0.01M TBS( pH 7.4) with 1 % BSA, 0.02 % Proclin300 and 50 % Glycerol.
Preservative:	ProClin
Precaution of Use:	This product contains ProClin: a POISONOUS AND HAZARDOUS SUBSTANCE, which should be handled by trained staff only.
Storage:	4 °C, -20 °C
Storage Comment:	Shipped at 4°C. Store at -20°C for one year. Avoid repeated freeze/thaw cycles.
Expiry Date:	12 months



ELISA

**Image 1.** Antigen: 0.2 µg/100 µL Primary: Antiserum, 1:500, 1:1000, 1:2000, 1:4000, 1:8000, 1:16000, 1:32000; Secondary: HRP conjugated Goat Anti-Rabbit IgG at 1: 5000; TMB staining; Read the data in Microplate Reader by 450nm



ELISA

**Image 2.** Antigen: 0.2ug/100ul, Primary: Antiserum, 1:500, 1:1000, 1:2000, 1:4000, 1:8000, 1:16000, 1:32000, Secondary: HRP conjugated Goat Anti-Rabbit IgG at 1: 5000, TMB staining Read the data in Microplate Reader by 450nm,