

Datasheet for ABIN7205847
anti-Lamin B1 antibody (N-Term)



[Go to Product page](#)

5 Images

Overview

Quantity:	100 µL
Target:	Lamin B1 (LMNB1)
Binding Specificity:	N-Term
Reactivity:	Human, Mouse, Rat
Host:	Rabbit
Clonality:	Polyclonal
Conjugate:	This Lamin B1 antibody is un-conjugated
Application:	Western Blotting (WB), ELISA, Immunofluorescence (IF), Immunohistochemistry (Paraffin-embedded Sections) (IHC (p))

Product Details

Purpose:	Lamin B1 Polyclonal Antibody
Immunogen:	Synthesized peptide derived from the N-terminal region of human Lamin B1
Isotype:	IgG
Specificity:	Lamin B1 Polyclonal Antibody detects endogenous levels of Lamin B1 protein.
Purification:	The antibody was affinity-purified from rabbit antiserum by affinity-chromatography using epitope-specific immunogen

Target Details

Target:	Lamin B1 (LMNB1)
---------	------------------

Target Details

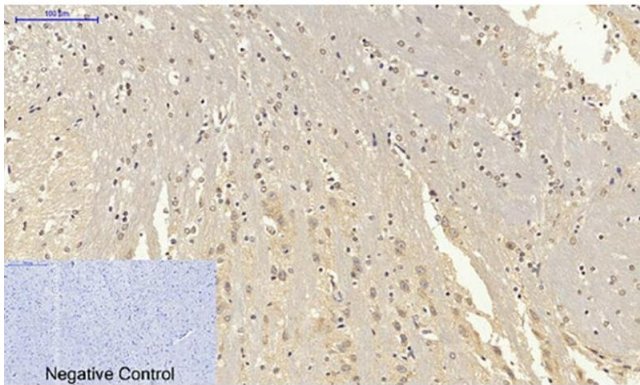
Alternative Name:	Lamin B1 (LMNB1 Products)
Background:	Rabbit Anti-Lamin B1 Polyclonal Antibody,LMNB1, LMN2, LMNB, Lamin-B1,LMNB1 encodes one of the two B-type lamin proteins and is a component of the nuclear lamina. A duplication of LMNB1 is associated with autosomal dominant adult-onset leukodystrophy (ADLD). Alternative splicing results in multiple transcript variants.,Lamin-B1
Gene ID:	4001
UniProt:	P20700
Pathways:	Apoptosis, Caspase Cascade in Apoptosis

Application Details

Application Notes:	Optimal working dilutions should be determined experimentally by the investigator. Suggested starting dilutions are as follows: WB (1:500-1:2000), IF (1:50-1:200), IHC-P (1:100-1:300), ELISA (1:40000). Not yet tested in other applications.
Restrictions:	For Research Use only

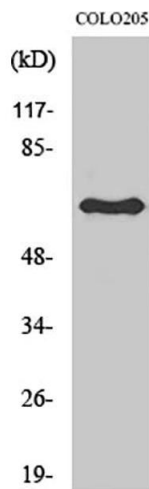
Handling

Format:	Liquid
Concentration:	1 mg/mL
Buffer:	PBS containing 50 % Glycerol, 0.5 % BSA and 0.02 % Sodium Azide.
Preservative:	Sodium azide
Precaution of Use:	This product contains Sodium azide: a POISONOUS AND HAZARDOUS SUBSTANCE which should be handled by trained staff only.
Storage:	-20 °C
Storage Comment:	Stable for one year at -20°C from date of shipment. For maximum recovery of product, centrifuge the original vial after thawing and prior to removing the cap. Aliquot to avoid repeated freezing and thawing.



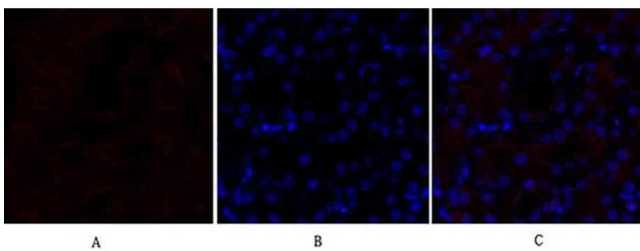
Immunohistochemistry

Image 1. Immunohistochemical analysis of paraffin-embedded mouse brain tissue. 1, Lamin B1 Polyclonal Antibody was diluted at 1:200 (4 °C, overnight). 2, Sodium citrate pH 6.0 was used for antibody retrieval (>98 °C, 20 min). 3, secondary antibody was diluted at 1:200 (room temperature, 30 min). Negative control was used by secondary antibody only.



Western Blotting

Image 2. Western Blot analysis of various cells using Lamin B1 Polyclonal Antibody diluted at 1:2000.



Immunofluorescence

Image 3. Immunofluorescence analysis of mouse kidney tissue. 1, Lamin B1 Polyclonal Antibody (red) was diluted at 1:200 (4 °C, overnight). 2, Cy3 Labeled secondary antibody was diluted at 1:300 (room temperature, 50 min). 3, Picture B: DAPI (blue) 10 min. Picture A: Target. Picture B: DAPI. Picture C: merge of A+B.

Please check the [product details page](#) for more images. Overall 5 images are available for ABIN7205847.