



[Go to Product page](#)

Datasheet for ABIN720715

## anti-VMP1 antibody (AA 361-406)

### 1 Image

#### Overview

Quantity:	100 µL
Target:	VMP1
Binding Specificity:	AA 361-406
Reactivity:	Mouse
Host:	Rabbit
Clonality:	Polyclonal
Conjugate:	This VMP1 antibody is un-conjugated
Application:	Western Blotting (WB), ELISA, Immunocytochemistry (ICC), Immunofluorescence (Cultured Cells) (IF (cc)), Immunofluorescence (Paraffin-embedded Sections) (IF (p)), Immunohistochemistry (Frozen Sections) (IHC (fro)), Immunohistochemistry (Paraffin-embedded Sections) (IHC (p))

#### Product Details

Immunogen:	KLH conjugated synthetic peptide derived from human TMEM49
Isotype:	IgG
Cross-Reactivity:	Mouse
Predicted Reactivity:	Human,Rat,Pig,Horse,Rabbit
Purification:	Purified by Protein A.

#### Target Details

Target:	VMP1
---------	------

## Target Details

---

Alternative Name:	TMEM49 ( <a href="#">VMP1 Products</a> )
Background:	Synonyms: EPG3, TANGO5, TMEM49, Vacuole membrane protein 1, Transmembrane protein 49, VMP1, TDC1, HSPC292  Background: Stress-induced protein that, when overexpressed, promotes formation of intracellular vacuoles followed by cell death. May be involved in the cytoplasmic vacuolization of acinar cells during the early stage of acute pancreatitis. Plays a role in the initial stages of the autophagic process through its interaction with BECN1 (By similarity). Involved in cell-cell adhesion. Plays an essential role in formation of cell junctions.
Gene ID:	81671
UniProt:	<a href="#">Q96GC9</a>

## Application Details

---

Application Notes:	WB 1:300-5000 ELISA 1:500-1000 IHC-P 1:200-400 IHC-F 1:100-500 IF(IHC-P) 1:50-200 IF(IHC-F) 1:50-200 IF(ICC) 1:50-200 ICC 1:100-500
Restrictions:	For Research Use only

## Handling

---

Format:	Liquid
Concentration:	1 µg/µL
Buffer:	0.01M TBS( pH 7.4) with 1 % BSA, 0.02 % Proclin300 and 50 % Glycerol.
Preservative:	ProClin
Precaution of Use:	This product contains ProClin: a POISONOUS AND HAZARDOUS SUBSTANCE, which should be handled by trained staff only.
Storage:	4 °C,-20 °C
Storage Comment:	Shipped at 4°C. Store at -20°C for one year. Avoid repeated freeze/thaw cycles.

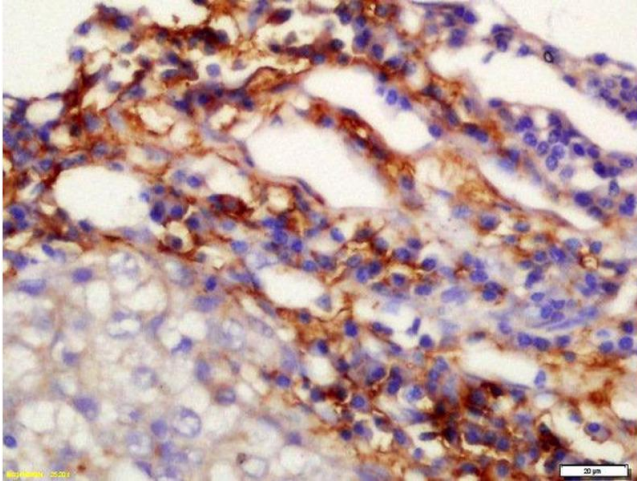
Handling

---

Expiry Date: 12 months

Images

---



#### Immunohistochemistry (Paraffin-embedded Sections)

**Image 1.** Formalin-fixed and paraffin embedded human lung carcinoma labeled with Anti-TMEM49 Polyclonal Antibody, Unconjugated at 1:200 followed by conjugation to the secondary antibody and DAB staining