

Datasheet for ABIN7207205  
**anti-NF-kB p65 antibody (acLys310)**



[Go to Product page](#)

6 Images

## Overview

Quantity:	100 µL
Target:	NF-kB p65 (NFkBp65)
Binding Specificity:	acLys310
Reactivity:	Human, Mouse
Host:	Rabbit
Clonality:	Polyclonal
Conjugate:	This NF-kB p65 antibody is un-conjugated
Application:	Western Blotting (WB), ELISA, Immunofluorescence (IF), Immunohistochemistry (Paraffin-embedded Sections) (IHC (p))

## Product Details

Purpose:	NFkB-p65 (Acetyl Lys310) Polyclonal Antibody
Immunogen:	Synthesized peptide derived from human NFkappaB-p65 around the acetylation site of K310 at AA range: 250-330
Isotype:	IgG
Specificity:	Acetyl-NFkB-p65 (K310) Polyclonal Antibody detects endogenous levels of NFkB-p65 protein only when acetylated at K310.
Purification:	The antibody was affinity-purified from rabbit antiserum by affinity-chromatography using epitope-specific immunogen

## Target Details

---

Target:	NF-kB p65 (NFkBp65)
Alternative Name:	NFkappaB-p65 ( <a href="#">NFkBp65 Products</a> )
Background:	Rabbit Anti-NFkB-p65 (Acetyl Lys310) Polyclonal Antibody,RELA, NFKB3, Transcription factor p65, Nuclear factor NF-kappa-B p65 subunit, Nuclear factor of kappa light polypeptide gene enhancer in B-cells 3,NF-kappa-B is a ubiquitous transcription factor involved in several biological processes. It is held in the cytoplasm in an inactive state by specific inhibitors. Upon degradation of the inhibitor, NF-kappa-B moves to the nucleus and activates transcription of specific genes. NF-kappa-B is composed of NFKB1 or NFKB2 bound to either REL, RELA, or RELB. The most abundant form of NF-kappa-B is NFKB1 complexed with the product of this gene, RELA. Four transcript variants encoding different isoforms have been found for RELA.,Transcription factor p65
Gene ID:	5970
UniProt:	<a href="#">Q04206</a>
Pathways:	<a href="#">NF-kappaB Signaling</a> , <a href="#">RTK Signaling</a> , <a href="#">TCR Signaling</a> , <a href="#">TLR Signaling</a> , <a href="#">Fc-epsilon Receptor Signaling Pathway</a> , <a href="#">Neurotrophin Signaling Pathway</a> , <a href="#">Activation of Innate immune Response</a> , <a href="#">Cellular Response to Molecule of Bacterial Origin</a> , <a href="#">Hepatitis C</a> , <a href="#">Toll-Like Receptors Cascades</a> , <a href="#">S100 Proteins</a>

## Application Details

---

Application Notes:	Optimal working dilutions should be determined experimentally by the investigator. Suggested starting dilutions are as follows: WB (1:500-1:2000), IF (1:50-1:300), IHC-P (1:50-1:300), ELISA (1:20000). Not yet tested in other applications.
Restrictions:	For Research Use only

## Handling

---

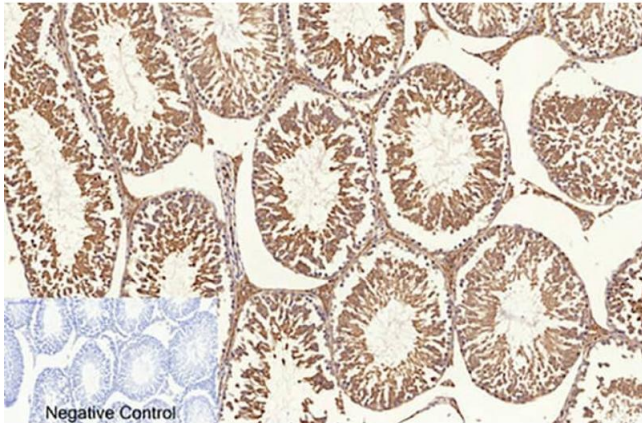
Format:	Liquid
Concentration:	1 mg/mL
Buffer:	PBS containing 50 % Glycerol, 0.5 % BSA and 0.02 % Sodium Azide.
Preservative:	Sodium azide
Precaution of Use:	This product contains Sodium azide: a POISONOUS AND HAZARDOUS SUBSTANCE which should be handled by trained staff only.

## Handling

Storage: -20 °C

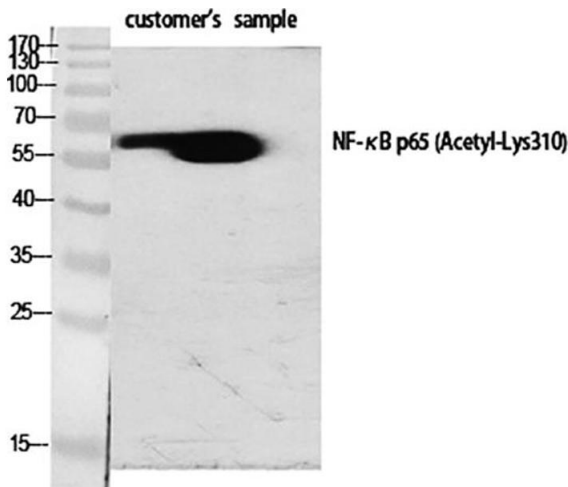
Storage Comment: Stable for one year at -20°C from date of shipment. For maximum recovery of product, centrifuge the original vial after thawing and prior to removing the cap. Aliquot to avoid repeated freezing and thawing.

## Images



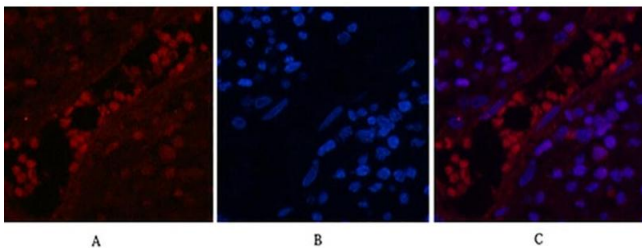
### Immunohistochemistry

**Image 1.** Immunohistochemical analysis of paraffin-embedded rat testis tissue. 1, NFκB-p65 (Acetyl Lys310) Polyclonal Antibody was diluted at 1:200 (4 °C, overnight). 2, Sodium citrate pH 6.0 was used for antibody retrieval (>98 °C, 20 min). 3, secondary antibody was diluted at 1:200 (room temperature, 30 min). Negative control was used by secondary antibody only.



### Western Blotting

**Image 2.** Western Blot analysis of various cells using Acetyl-NFκB-p65 (K310) Polyclonal Antibody diluted at 1:1000.



### Immunofluorescence

**Image 3.** Immunofluorescence analysis of human appendix tissue. 1, NFκB-p65 (Acetyl Lys310) Polyclonal Antibody (red) was diluted at 1:200 (4 °C, overnight). 2, Cy3 Labeled secondary antibody was diluted at 1:300 (room temperature, 50 min). 3, Picture B: DAPI (blue) 10 min. Picture A: Target. Picture B: DAPI. Picture C: merge of A+B.

## Images

---

Please check the [product details page](#) for more images. Overall 6 images are available for ABIN7207205.