

Datasheet for ABIN720865  
**anti-WDR16 antibody (AA 401-500)**[Go to Product page](#)**1** Image**1** Publication

## Overview

|                      |  |
|----------------------|--|
| Quantity:            | 100 µL   |
| Target:              | WDR16  |
| Binding Specificity: | AA 401-500   |
| Reactivity:          | Human  |
| Host:                | Rabbit   |
| Clonality:           | Polyclonal   |
| Conjugate:           | This WDR16 antibody is un-conjugated   |
| Application:         | Western Blotting (WB), ELISA, Immunofluorescence (Cultured Cells) (IF (cc)), Immunofluorescence (Paraffin-embedded Sections) (IF (p)), Immunohistochemistry (Paraffin-embedded Sections) (IHC (p)), Immunohistochemistry (Frozen Sections) (IHC (fro)) |

## Product Details

|                       |   |
|-----------------------|---|
| Immunogen:            | KLH conjugated synthetic peptide derived from human WDR16 |
| Isotype:              | IgG   |
| Cross-Reactivity:     | Human   |
| Predicted Reactivity: | Mouse,Rat,Dog,Cow,Pig,Horse                               |
| Purification:         | Purified by Protein A.                                    |

## Target Details

|         |       |
|---------|-------|
| Target: | WDR16 |
|---------|-------|

## Target Details

|                   |  |
|-------------------|--|
| Alternative Name: | WDR16 ( <a href="#">WDR16 Products</a> )   |
| Background:       | <p>Synonyms: WDR16, WDRPUH, WD repeat-containing protein 16, WD40-repeat protein up-regulated in HCC</p> <p>Background: WD repeat containing proteins, such as WDR16, play crucial roles in a wide range of physiologic functions, including signal transduction, RNA processing, remodeling the cytoskeleton, regulation of vesicular traffic, and cell division.</p> |
| Gene ID:          | 146845   |
| UniProt:          | <a href="#">Q8N1V2</a>   |

## Application Details

|                    |   |
|--------------------|---|
| Application Notes: | WB 1:300-5000<br>ELISA 1:500-1000<br>IHC-P 1:200-400<br>IHC-F 1:100-500<br>IF(IHC-P) 1:50-200<br>IF(IHC-F) 1:50-200<br>IF(ICC) 1:50-200 |
| Restrictions:      | For Research Use only   |

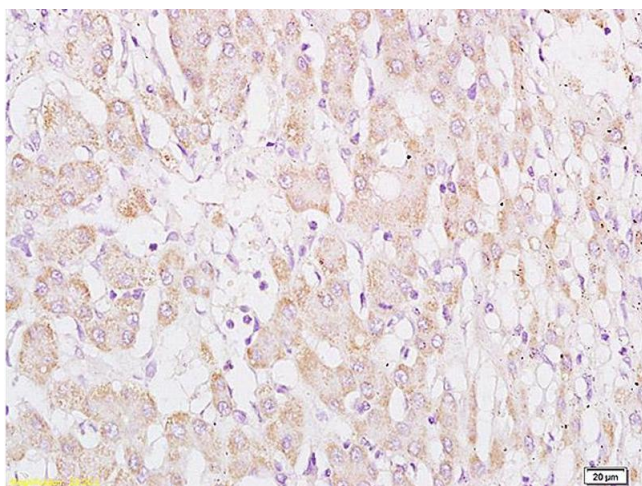
## Handling

|                    |  |
|--------------------|--|
| Format:            | Liquid   |
| Concentration:     | 1 µg/µL  |
| Buffer:            | 0.01M TBS( pH 7.4) with 1 % BSA, 0.02 % Proclin300 and 50 % Glycerol.  |
| Preservative:      | ProClin  |
| Precaution of Use: | This product contains ProClin: a POISONOUS AND HAZARDOUS SUBSTANCE, which should be handled by trained staff only. |
| Storage:           | 4 °C,-20 °C  |
| Storage Comment:   | Shipped at 4°C. Store at -20°C for one year. Avoid repeated freeze/thaw cycles.                                    |
| Expiry Date:       | 12 months  |

## Publications

Product cited in: Chen, Yuan, Cai, Chen, Chi, Wei, Zhou, Shi: "Identification of chromosomal copy number variations and novel candidate loci in hereditary nonpolyposis colorectal cancer with mismatch repair proficiency." in: **Genomics**, Vol. 102, Issue 1, pp. 27-34, (2013) ([PubMed](#)).

## Images



### Immunohistochemistry

**Image 1.** Formalin-fixed and paraffin embedded human hepatocellular carcinoma labeled with Anti WDR16 Polyclonal Antibody, Unconjugated (ABIN720865) at 1:200 followed by conjugation to the secondary antibody and DAB staining