

Datasheet for ABIN7209266
anti-RYR2 antibody



[Go to Product page](#)

1 Image

Overview

Quantity:	100 µL
Target:	RYR2
Reactivity:	Human, Mouse, Rat
Host:	Rabbit
Clonality:	Polyclonal
Conjugate:	This RYR2 antibody is un-conjugated
Application:	ELISA, Western Blotting (WB), Immunofluorescence (IF), Immunohistochemistry (Paraffin-embedded Sections) (IHC (p))

Product Details

Purpose:	RyR-2 Polyclonal Antibody
Immunogen:	Synthesized peptide derived from human RyR-2 around the non-phosphorylation site of S2808
Isotype:	IgG
Specificity:	RyR-2 Polyclonal Antibody detects endogenous levels of RyR-2 protein.
Purification:	The antibody was affinity-purified from rabbit antiserum by affinity-chromatography using epitope-specific immunogen

Target Details

Target:	RYR2
Alternative Name:	RyR-2 (RYR2 Products)

Target Details

Background: Rabbit Anti-RyR-2 Polyclonal Antibody,RYR2, Ryanodine receptor 2, RYR-2, RyR2, hRYR-2, Cardiac muscle ryanodine receptor, Cardiac muscle ryanodine receptor-calcium release channel, Type 2 ryanodine receptor,RYR2 (ryanodine receptor 2) encodes a ryanodine receptor found in cardiac muscle sarcoplasmic reticulum. The encoded protein is one of the components of a calcium channel, composed of a tetramer of the ryanodine receptor proteins and a tetramer of FK506 binding protein 1B proteins, that supplies calcium to cardiac muscle. Mutations in RYR2 are associated with stress-induced polymorphic ventricular tachycardia and arrhythmogenic right ventricular dysplasia.,Ryanodine receptor 2

Gene ID: 6262

UniProt: [Q92736](#)

Pathways: [Myometrial Relaxation and Contraction](#)

Application Details

Application Notes: Optimal working dilutions should be determined experimentally by the investigator. Suggested starting dilutions are as follows: IHC-P (1:100-1:300), IF (1:200-1:1000), ELISA (1:5000). Not yet tested in other applications.

Restrictions: For Research Use only

Handling

Format: Liquid

Concentration: 1 mg/mL

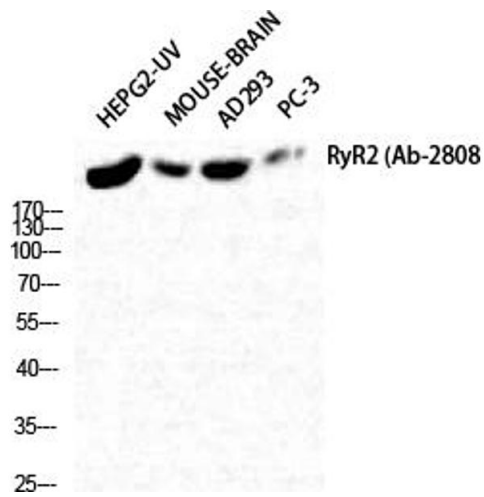
Buffer: PBS containing 50 % Glycerol, 0.5 % BSA and 0.02 % Sodium Azide.

Preservative: Sodium azide

Precaution of Use: This product contains Sodium azide: a POISONOUS AND HAZARDOUS SUBSTANCE which should be handled by trained staff only.

Storage: -20 °C

Storage Comment: Stable for one year at -20°C from date of shipment. For maximum recovery of product, centrifuge the original vial after thawing and prior to removing the cap. Aliquot to avoid repeated freezing and thawing.



Western Blotting

Image 1. Western Blot analysis of HepG2-UV Mouse-BRAIN AD293 PC-3 cells using RyR-2 Polyclonal Antibody diluted at 1:2000.