

Datasheet for ABIN7210165

**anti-tau antibody****3** Images[Go to Product page](#)

## Overview

Quantity:	100 µL
Target:	tau
Reactivity:	Human, Mouse, Rat
Host:	Mouse
Clonality:	Monoclonal
Conjugate:	This tau antibody is un-conjugated
Application:	Western Blotting (WB), Immunohistochemistry (Paraffin-embedded Sections) (IHC (p))

## Product Details

Purpose:	Tau Mouse Monoclonal Antibody (10E3)
Immunogen:	Synthetic Peptide of Tau
Clone:	10E3
Isotype:	IgG1
Specificity:	Tau protein detects endogenous levels of MAPT.
Purification:	The antibody was affinity-purified from mouse ascites by affinity-chromatography using specific immunogen

## Target Details

Target:	tau
Alternative Name:	Tau ( <a href="#">tau Products</a> )

## Target Details

---

**Background:** Mouse Anti-Tau Mouse Monoclonal Antibody (10E3),MAPT,MAPT (microtubule associated protein tau) encodes the microtubule-associated protein tau (MAPT) whose transcript undergoes complex, regulated alternative splicing, giving rise to several mRNA species. MAPT transcripts are differentially expressed in the nervous system, depending on stage of neuronal maturation and neuron type. MAPT gene mutations have been associated with several neurodegenerative disorders such as Alzheimer's disease, Pick's disease, frontotemporal dementia, cortico-basal degeneration and progressive supranuclear palsy.,MAPT

**Gene ID:** 4137

**UniProt:** [P10636](#)

## Application Details

---

**Application Notes:** Optimal working dilutions should be determined experimentally by the investigator. Suggested starting dilutions are as follows: WB (1:1000-1:2000), IHC-P (1:100-1:200).

**Restrictions:** For Research Use only

## Handling

---

**Format:** Liquid

**Concentration:** 1 mg/mL

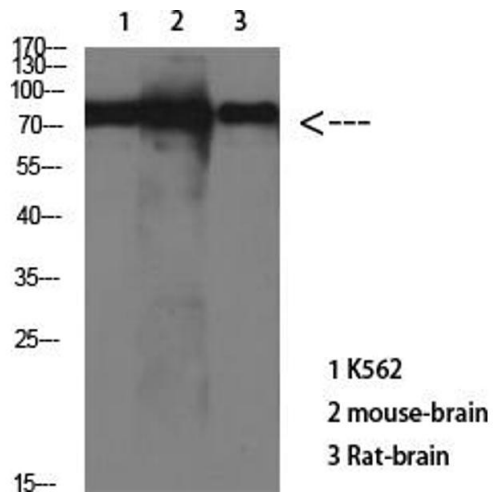
**Buffer:** PBS containing 50 % Glycerol, 0.5 % BSA and 0.02 % Sodium Azide.

**Preservative:** Sodium azide

**Precaution of Use:** This product contains Sodium azide: a POISONOUS AND HAZARDOUS SUBSTANCE which should be handled by trained staff only.

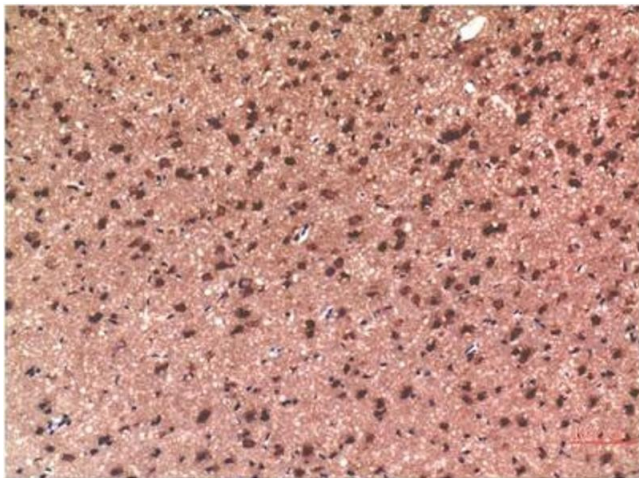
**Storage:** -20 °C

**Storage Comment:** Stable for one year at -20°C from date of shipment. For maximum recovery of product, centrifuge the original vial after thawing and prior to removing the cap. Aliquot to avoid repeated freezing and thawing.



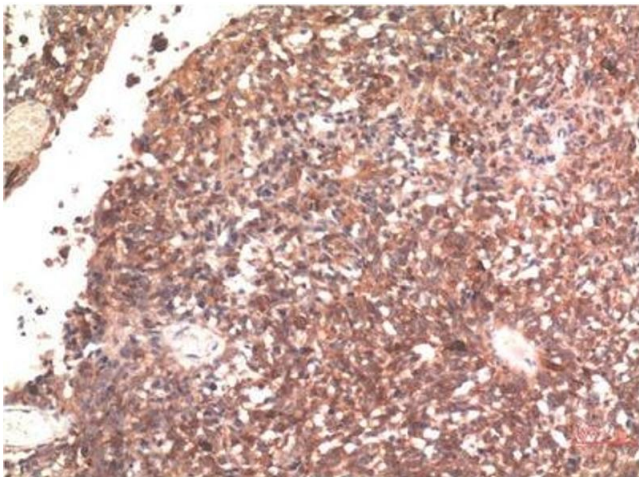
### Western Blotting

**Image 1.** Western Blot analysis of various cells using Antibody diluted at 1:1000.



### Immunohistochemistry

**Image 2.** Immunohistochemical analysis of paraffin-embedded Rat Brain Tissue using Tau Mouse mAb diluted at 1:200.



### Immunohistochemistry

**Image 3.** Immunohistochemical analysis of paraffin-embedded Human Brain Tissue using Tau Mouse mAb diluted at 1:200.