



Datasheet for ABIN721030  
**anti-SLC26A4 antibody (AA 301-400)**



[Go to Product page](#)

1 Image

### Overview

Quantity:	100 µL
Target:	SLC26A4
Binding Specificity:	AA 301-400
Reactivity:	Human, Pig
Host:	Rabbit
Clonality:	Polyclonal
Conjugate:	This SLC26A4 antibody is un-conjugated
Application:	ELISA, Western Blotting (WB), Flow Cytometry (FACS), Immunofluorescence (Paraffin-embedded Sections) (IF (p)), Immunohistochemistry (Paraffin-embedded Sections) (IHC (p))

### Product Details

Immunogen:	KLH conjugated synthetic peptide derived from human Solute carrier family 26 member 4
Isotype:	IgG
Cross-Reactivity:	Human, Pig
Predicted Reactivity:	Mouse,Rat,Dog,Cow,Horse
Purification:	Purified by Protein A.

### Target Details

Target:	SLC26A4
Alternative Name:	SLC26A4 ( <a href="#">SLC26A4 Products</a> )

## Target Details

---

Background:	Synonyms: EVA, PDS, DFNB4, TDH2B, Pendrin, Sodium-independent chloride/iodide transporter, Solute carrier family 26 member 4, SLC26A4 Background: Sodium-independent transporter of chloride and iodide.
Gene ID:	5172
UniProt:	<a href="#">O43511</a>
Pathways:	<a href="#">Thyroid Hormone Synthesis</a> , <a href="#">Sensory Perception of Sound</a>

## Application Details

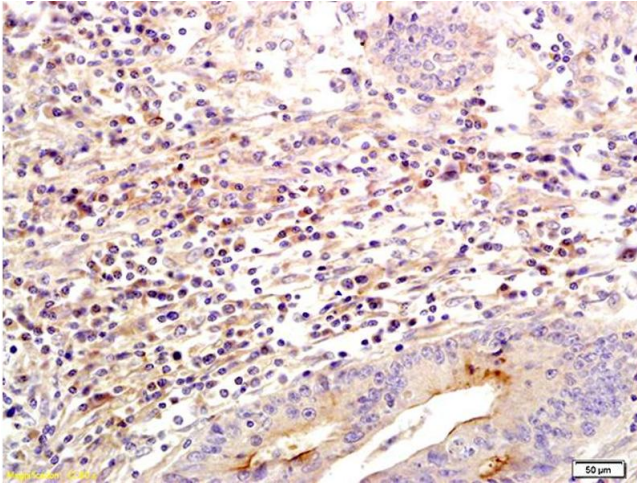
---

Application Notes:	WB 1:300-5000 ELISA 1:500-1000 FCM 1:20-100 IHC-P 1:200-400 IF(IHC-P) 1:50-200
Restrictions:	For Research Use only

## Handling

---

Format:	Liquid
Concentration:	1 µg/µL
Buffer:	0.01M TBS( pH 7.4) with 1 % BSA, 0.02 % Proclin300 and 50 % Glycerol.
Preservative:	ProClin
Precaution of Use:	This product contains ProClin: a POISONOUS AND HAZARDOUS SUBSTANCE, which should be handled by trained staff only.
Storage:	4 °C,-20 °C
Storage Comment:	Shipped at 4°C. Store at -20°C for one year. Avoid repeated freeze/thaw cycles.
Expiry Date:	12 months



### Immunohistochemistry

**Image 1.** Formalin-fixed and paraffin embedded human colon labeled with Anti SLC26A4 Polyclonal Antibody, Unconjugated (ABIN721030) followed by conjugation to the secondary antibody and DAB staining