



Datasheet for ABIN7210648
anti-RANKL antibody (AA 10-90)



[Go to Product page](#)

6 Images

Overview

Quantity:	100 µL
Target:	RANKL (TNFSF11)
Binding Specificity:	AA 10-90
Reactivity:	Human, Mouse
Host:	Rabbit
Clonality:	Polyclonal
Conjugate:	This RANKL antibody is un-conjugated
Application:	Western Blotting (WB), ELISA, Immunofluorescence (IF), Immunohistochemistry (Paraffin-embedded Sections) (IHC (p))

Product Details

Purpose:	OPG Polyclonal Antibody
Immunogen:	Synthesized peptide derived from the N-terminal region of human OPG at AA range: 10-90
Isotype:	IgG
Specificity:	OPG Polyclonal Antibody detects endogenous levels of OPG protein.
Purification:	The antibody was affinity-purified from rabbit antiserum by affinity-chromatography using epitope-specific immunogen

Target Details

Target:	RANKL (TNFSF11)
---------	-----------------

Target Details

Alternative Name: [OPG \(TNFSF11 Products\)](#)

Background: Rabbit Anti-OPG Polyclonal Antibody, TNFRSF11B, OCIF, OPG, Tumor necrosis factor receptor superfamily member 11B, Osteoclastogenesis inhibitory factor, Osteoprotegerin, TNF receptor superfamily member 11b encoded by TNFRSF11B is a member of the TNF-receptor superfamily. TNF receptor superfamily member 11b is an osteoblast-secreted decoy receptor that functions as a negative regulator of bone resorption. TNF receptor superfamily member 11b specifically binds to its ligand, osteoprotegerin ligand, both of which are key extracellular regulators of osteoclast development. Studies of the mouse counterpart also suggest that TNF receptor superfamily member 11b and its ligand play a role in lymph-node organogenesis and vascular calcification. Alternatively spliced transcript variants of TNFRSF11B have been reported, but their full length nature has not been determined., Tumor necrosis factor receptor superfamily member 11B

Gene ID: 4982

UniProt: [O00300](#)

Pathways: [NF-kappaB Signaling](#)

Application Details

Application Notes: Optimal working dilutions should be determined experimentally by the investigator. Suggested starting dilutions are as follows: WB (1:500-1:2000), IF (1:200-1:1000), IHC-P (1:100-1:300), ELISA (1:10000). Not yet tested in other applications.

Restrictions: For Research Use only

Handling

Format: Liquid

Concentration: 1 mg/mL

Buffer: PBS containing 50 % Glycerol, 0.5 % BSA and 0.02 % Sodium Azide.

Preservative: Sodium azide

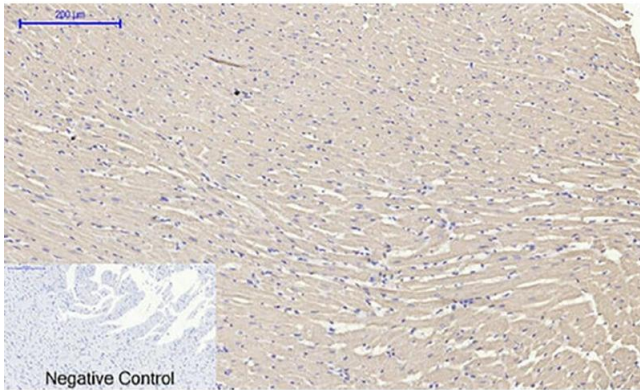
Precaution of Use: This product contains Sodium azide: a POISONOUS AND HAZARDOUS SUBSTANCE which should be handled by trained staff only.

Storage: -20 °C

Storage Comment: Stable for one year at -20°C from date of shipment. For maximum recovery of product,

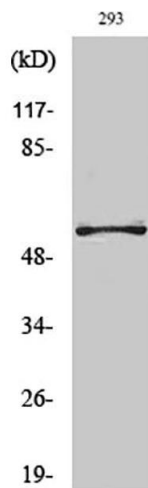
centrifuge the original vial after thawing and prior to removing the cap. Aliquot to avoid repeated freezing and thawing.

Images



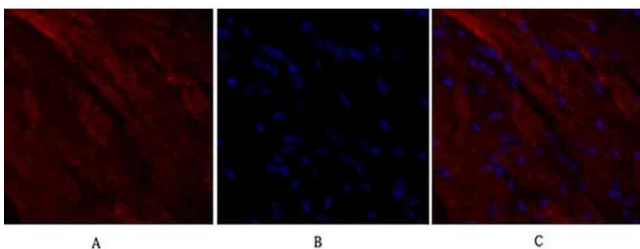
Immunohistochemistry

Image 1. Immunohistochemical analysis of paraffin-embedded rat heart tissue. 1, OPG Polyclonal Antibody was diluted at 1:200 (4 °C, overnight). 2, Sodium citrate pH 6.0 was used for antibody retrieval (>98 °C, 20 min). 3, secondary antibody was diluted at 1:200 (room temperature, 30 min). Negative control was used by secondary antibody only.



Western Blotting

Image 2. Western Blot analysis of various cells using OPG Polyclonal Antibody diluted at 1:1000.



Immunofluorescence

Image 3. Immunofluorescence analysis of mouse heart tissue. 1, OPG Polyclonal Antibody (red) was diluted at 1:200 (4 °C, overnight). 2, Cy3 Labeled secondary antibody was diluted at 1:300 (room temperature, 50 min). 3, Picture B: DAPI (blue) 10 min. Picture A: Target. Picture B: DAPI. Picture C: merge of A+B.

Please check the [product details page](#) for more images. Overall 6 images are available for ABIN7210648.