

Datasheet for ABIN7211384

anti-Actin antibody[Go to Product page](#)**1** Image

Overview

Quantity:	200 µg
Target:	Actin
Reactivity:	Human, Rat, Mouse, Chicken, Rabbit, Dog, Cow, Monkey, Pig, Guinea Pig, Sheep, Xenopus laevis, Hamster
Host:	Rabbit
Clonality:	Polyclonal
Conjugate:	This Actin antibody is un-conjugated
Application:	Western Blotting (WB)

Product Details

Immunogen:	Bovine skeletal muscle Actin.
Characteristics:	ACTA ACTSA,Actin polyclonal antibody
Purification:	Protein A affinity purified.,Purified from rabbit serum.

Target Details

Target:	Actin
Abstract:	Actin Products
UniProt:	P68133

Application Details

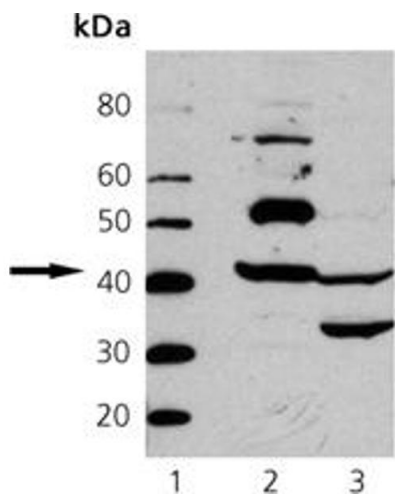
Application Notes: Western Blot (1:1,000, ECL)Suggested dilutions/conditions may not be available for all applications.Optimal conditions must be determined individually for each application.,Detects a band of ~42 kDa by Western blot.

Restrictions: For Research Use only

Handling

Format:	Liquid
Buffer:	Liquid. In PBS, pH 7.2, containing 0.09 % sodium azide and 50 % glycerol.
Preservative:	Sodium azide
Precaution of Use:	This product contains Sodium azide: a POISONOUS AND HAZARDOUS SUBSTANCE which should be handled by trained staff only.
Storage:	-20 °C

Images



Western Blotting

Image 1. Western Blot Analysis of Actin pAb: Lane 1: MWM, Lane 2: Mouse Heart Tissue Extract, Lane 3: Chicken Heart Tissue Extract.