

Datasheet for ABIN7211405

**anti-PKC antibody**

## 2 Images

[Go to Product page](#)

## Overview

Quantity:	100 µg
Target:	PKC (PKC pan)
Reactivity:	Human, Mouse, Rat, Chicken, Cow, Dog, Guinea Pig, Monkey, Pig, Rabbit, Sheep
Host:	Rabbit
Clonality:	Polyclonal
Conjugate:	This PKC antibody is un-conjugated
Application:	Western Blotting (WB), Immunohistochemistry (IHC), Immunoprecipitation (IP)

## Product Details

Immunogen:	Synthetic peptide corresponding to a portion of human PKC. The sequence is completely conserved between the alpha, beta, and delta isoforms of PKC.
Characteristics:	protein kinase C,PKC polyclonal antibody
Purification:	Protein A affinity purified.,Purified from rabbit serum.

## Target Details

Target:	PKC (PKC pan)
Alternative Name:	PKC ( <a href="#">PKC pan Products</a> )
Pathways:	<a href="#">Positive Regulation of Response to DNA Damage Stimulus</a>

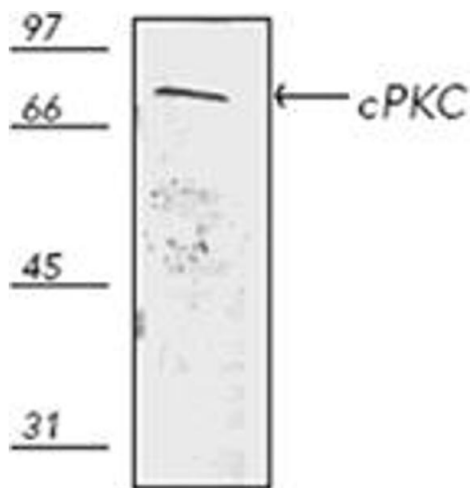
## Application Details

Application Notes:	Immunohistochemistry (1:50)Immunoprecipitation (12.5 µg/mL)Western Blot (2 µg/mL, ECL)Suggested dilutions/conditions may not be available for all applications.Optimal conditions must be determined individually for each application.,Detects a band of ~67-83 kDa by Western blot.
Restrictions:	For Research Use only

## Handling

Format:	Liquid
Buffer:	Liquid. In borate buffered saline, pH 8.2.
Storage:	-20 °C

## Images



### Western Blotting

**Image 1.** Western blot analysis of human thymus HS67 cell lysate, probed with PKC pAb.



### Immunohistochemistry

**Image 2.** Immunohistochemistry analysis of human lung cancer tissue with PKC pAb.