

## Datasheet for ABIN7211407

**anti-PRKG1 antibody**

## 2 Images

[Go to Product page](#)

## Overview

Quantity:	200 µg
Target:	PRKG1
Reactivity:	Human, Mouse, Rat, Pig
Host:	Rabbit
Clonality:	Polyclonal
Conjugate:	This PRKG1 antibody is un-conjugated
Application:	Western Blotting (WB), Immunohistochemistry (Paraffin-embedded Sections) (IHC (p))

## Product Details

Immunogen:	Synthetic peptide corresponding to a portion of human PKG.
Characteristics:	Protein kinase G,PKG polyclonal antibody
Purification:	Protein A affinity purified.,Purified from rabbit serum.

## Target Details

Target:	PRKG1
Alternative Name:	PKG ( <a href="#">PRKG1 Products</a> )
UniProt:	<a href="#">Q13976</a>

## Application Details

Application Notes:	Western Blot (1:1,000, colorimetric)Suggested dilutions/conditions may not be available for all
--------------------	---

Application Details

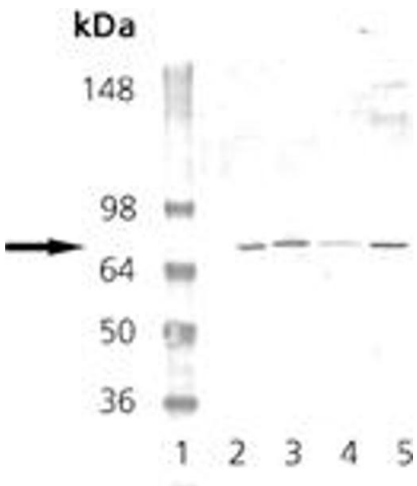
applications.Optimal conditions must be determined individually for each application.,Detects a band of ~75 kDa by Western blot.

Restrictions: For Research Use only

Handling

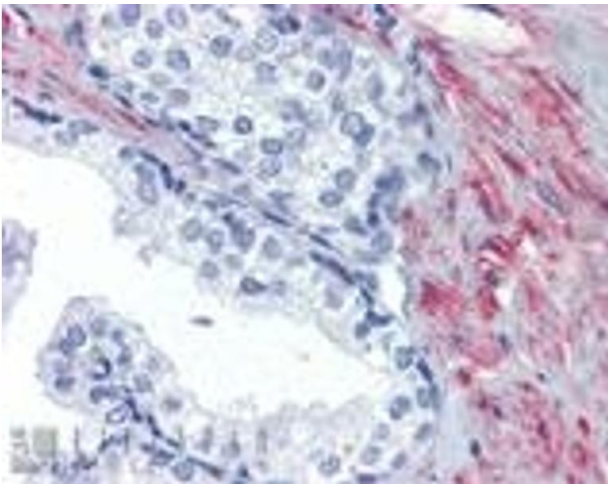
Format:	Liquid
Buffer:	Liquid. In PBS, pH 7.2, containing 50 % glycerol and 0.09 % sodium azide.
Preservative:	Sodium azide
Precaution of Use:	This product contains Sodium azide: a POISONOUS AND HAZARDOUS SUBSTANCE which should be handled by trained staff only.
Storage:	-20 °C

Images



**Western Blotting**

**Image 1.** Western blot analysis: Lane 1: MW marker, Lane 2: Mouse Brain Tissue Extract, Lane 3: Rat Brain Tissue Extract, Lane 4: EKS4 Cell Lysate, Lane 5: HS67 Cell Lysate probed with PKG pAb.



**Immunohistochemistry**

**Image 2.** Immunohistochemistry analysis of human prostate tissue stained with PKG, pAb at 10 µg/mL.