

Datasheet for ABIN7211419
anti-SMN1 antibody (C-Term)



[Go to Product page](#)

1 Image

Overview

Quantity:	200 µg
Target:	SMN1
Binding Specificity:	C-Term
Reactivity:	Human
Host:	Mouse
Clonality:	Monoclonal
Conjugate:	This SMN1 antibody is un-conjugated
Application:	Western Blotting (WB)

Product Details

Immunogen:	Recombinant fragment corresponding to the carboxy-terminus of human SMN1.
Clone:	2B1
Isotype:	IgG
Characteristics:	Survival Motor Neuron, SMN1 monoclonal antibody (2B1)
Purification:	Protein G-affinity purified., Purified from hybridoma tissue culture supernatant.

Target Details

Target:	SMN1
Alternative Name:	SMN1 (SMN1 Products)
UniProt:	Q16637

Target Details

Pathways: [Ribonucleoprotein Complex Subunit Organization](#)

Application Details

Application Notes: Western Blot (1:1,000, colorimetric) Suggested dilutions/conditions may not be available for all applications. Optimal conditions must be determined individually for each application. Detects a band of ~38 kDa by Western blot.

Restrictions: For Research Use only

Handling

Format: Liquid

Buffer: Liquid. In PBS, pH 7.2, containing 0.09 % sodium azide.

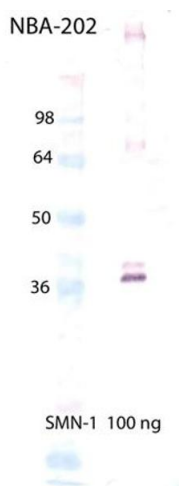
Preservative: Sodium azide

Precaution of Use: This product contains Sodium azide: a POISONOUS AND HAZARDOUS SUBSTANCE which should be handled by trained staff only.

Handling Advice: Avoid freeze/thaw cycles.

Storage: -20 °C

Images



Western Blotting

Image 1. Western Blot Analysis of SMN1, mAb (2B1) . Lane 1: MWM, Lane 2: Empty, and Lane 3: SMN1 (human), (recombinant) (His-tag) .