



[Go to Product page](#)

Datasheet for ABIN7211443

anti-GroES antibody

1 Image

Overview

Quantity:	200 µL
Target:	GroES
Reactivity:	E. coli
Host:	Rabbit
Clonality:	Polyclonal
Conjugate:	This GroES antibody is un-conjugated
Application:	Western Blotting (WB)

Product Details

Immunogen:	E. coli GroES.
Characteristics:	Chaperonin 10,GroES (E. coli) polyclonal antibody
Purification:	Whole rabbit serum.

Target Details

Target:	GroES
Alternative Name:	GroES (GroES Products)

Application Details

Application Notes:	Western Blot (1:5,000, colorimetric)Suggested dilutions/conditions may not be available for all applications.Optimal conditions must be determined individually for each application.,Detects a band of ~10 kDa by Western blot.
--------------------	--

Application Details

Restrictions: For Research Use only

Handling

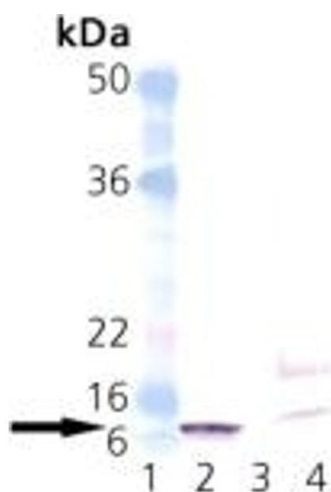
Format: Liquid

Buffer: Liquid. Whole rabbit serum.

Handling Advice: Avoid freeze/thaw cycles.

Storage: -20 °C

Images



Western Blotting

Image 1. Western blot analysis of GroES: Lane 1: MW marker, Lane 2: GroES Recombinant E. coli Protein, Lane 3: (Empty), Lane 4: E. coli Lysate.