



[Go to Product page](#)

Datasheet for ABIN7211456
anti-Metallothionein antibody

2 Images

Overview

Quantity:	200 µg
Target:	Metallothionein (MT)
Reactivity:	Mouse, Human, Rat, Rabbit, Fish, Horse
Host:	Mouse
Clonality:	Monoclonal
Conjugate:	This Metallothionein antibody is un-conjugated
Application:	Western Blotting (WB), ELISA, Immunohistochemistry (Paraffin-embedded Sections) (IHC (p))

Product Details

Immunogen:	Cross-linked rabbit liver Metallothionein I and II.
Clone:	UC1MT
Isotype:	IgG1
Characteristics:	MT1A Metallothionein MGC32848 MT1S MTC metallothionein 1A (functional),Metallothionein monoclonal antibody (UC1MT)
Purification:	Protein G affinity purified.,Purified from ascites.

Target Details

Target:	Metallothionein (MT)
Alternative Name:	Metallothionein (MT Products)
Pathways:	Transition Metal Ion Homeostasis , Regulation of Cell Size , Regulation of Carbohydrate

Target Details

Metabolic Process, Protein targeting to Nucleus

Application Details

Application Notes: Western Blot (1:1,000, ECL) Suggested dilutions/conditions may not be available for all applications. Optimal conditions must be determined individually for each application. Detects a band of ~15 kDa by Western blot.

Restrictions: For Research Use only

Handling

Format: Liquid

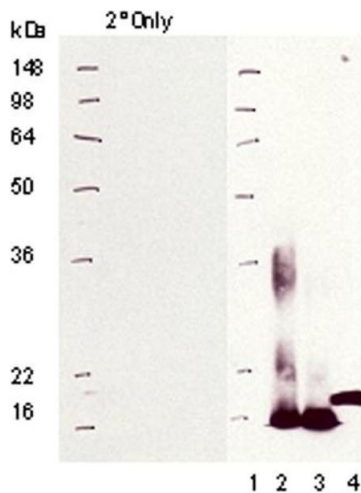
Buffer: Liquid. In PBS, pH 7.2, containing 50 % glycerol and 0.09 % sodium azide.

Preservative: Sodium azide

Precaution of Use: This product contains Sodium azide: a POISONOUS AND HAZARDOUS SUBSTANCE which should be handled by trained staff only.

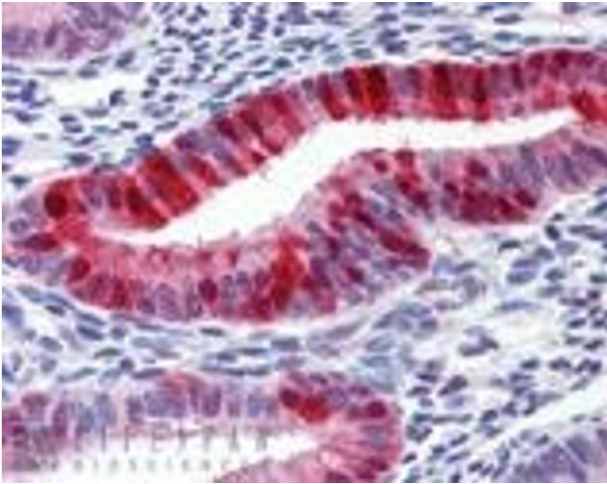
Storage: -20 °C

Images



Western Blotting

Image 1. Western blot analysis of : Lane 1: MW marker, Lane 2: MT I, Lane 3: MT II, Lane 4: Mummichug CdCl₂.



Immunohistochemistry

Image 2. Immunohistochemistry analysis of human uterus tissue stained with Metallothionein, mAb (UC1MT) at 10 μ g/mL.