

Datasheet for ABIN7211467
anti-HSPB6 antibody



[Go to Product page](#)

1 Image

Overview

Quantity:	200 µg
Target:	HSPB6
Reactivity:	Human, Rat, Mouse, Cow, Dog, Fish
Host:	Rabbit
Clonality:	Polyclonal
Conjugate:	This HSPB6 antibody is un-conjugated
Application:	Western Blotting (WB)

Product Details

Immunogen:	Rat skeletal muscle Hsp20.
Characteristics:	HspB6 Heat shock protein 20,HSP 20 polyclonal antibody
Purification:	Peptide affinity purified.,Purified from rabbit serum.

Target Details

Target:	HSPB6
Alternative Name:	HSP20 (HSPB6 Products)
UniProt:	P97541

Application Details

Application Notes:	Western Blot (1:1,000, colorimetric)Suggested dilutions/conditions may not be available for all
--------------------	-------------------------------------------------------------------------------------------------

Application Details

applications. Optimal conditions must be determined individually for each application. Detects a band of ~20 kDa by Western blot.

Restrictions: For Research Use only

Handling

Format: Liquid

Buffer: Liquid. In 0.1M phosphate buffer, pH 7.0, containing 3 % BSA and 0.09 % sodium azide.

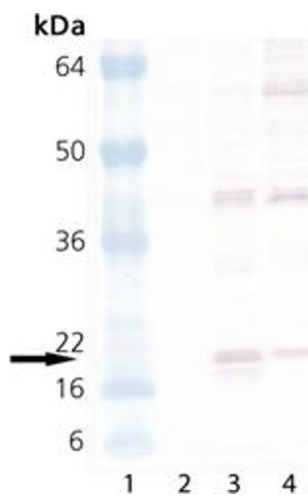
Preservative: Sodium azide

Precaution of Use: This product contains Sodium azide: a POISONOUS AND HAZARDOUS SUBSTANCE which should be handled by trained staff only.

Handling Advice: Avoid freeze/thaw cycles.

Storage: -20 °C

Images



Western Blotting

Image 1. Western blot analysis of HSP20, pAb : Lane 1: MW Marker, Lane 2: HeLa (heat shocked) , Lane 3: 3T3 (heat shocked) , Lane 4: PC-12 (heat shocked)