



[Go to Product page](#)

Datasheet for ABIN7211489  
**anti-KDEL antibody (AA 649-654)**

3 Images

### Overview

Quantity:	200 µg
Target:	KDEL (Lys Asp Glu Leu)
Binding Specificity:	AA 649-654
Reactivity:	Avian, Insect, Mammalian, Plant, Saccharomyces cerevisiae
Host:	Mouse
Clonality:	Monoclonal
Conjugate:	This KDEL antibody is un-conjugated
Application:	Western Blotting (WB), Immunocytochemistry (ICC), Flow Cytometry (FACS), Immunofluorescence (IF), Immunohistochemistry (Paraffin-embedded Sections) (IHC (p)), ELISA, Electron Microscopy (EM), Immunoprecipitation (IP)

### Product Details

Immunogen:	Synthetic peptide corresponding to aa 649-654 (S649EKDEL654) of rat Grp78.
Clone:	10C3
Isotype:	IgG2a
Specificity:	Recognizes proteins containing the KDEL sequence.
Characteristics:	Lys-Asp-Glu-Leu  Lysine-aspartic acid-glutamate-leucine,KDEL monoclonal antibody (10C3)
Purification:	Protein G affinity purified.,Purified from ascites.

## Target Details

Target:	KDEL (Lys Asp Glu Leu)
Alternative Name:	KDEL ( <a href="#">Lys Asp Glu Leu Products</a> )
UniProt:	<a href="#">P06761</a>

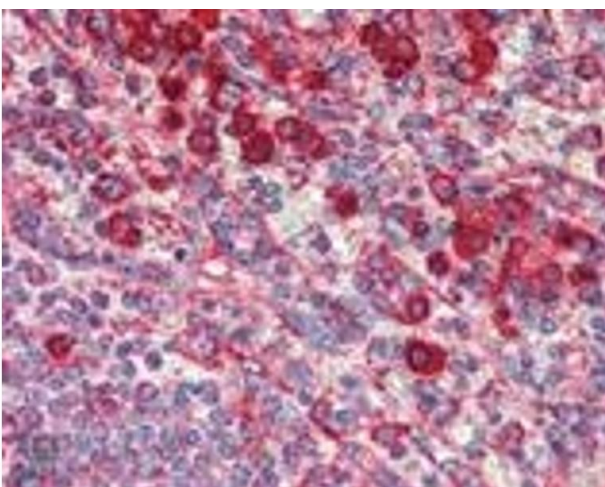
## Application Details

Application Notes:	Western Blot (1:1,000, colorimetric)Suggested dilutions/conditions may not be available for all applications.Optimal conditions must be determined individually for each application.,Detects three bands of ~94 kDa, ~78 kDa and ~55 kDa by Western blot..
Restrictions:	For Research Use only

## Handling

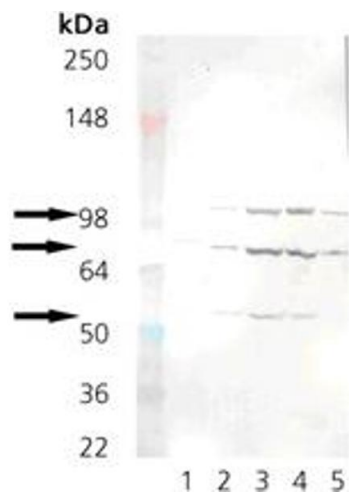
Format:	Liquid
Buffer:	Liquid. In PBS, pH 7.2, containing 50 % glycerol and 0.09 % sodium azide.
Preservative:	Sodium azide
Precaution of Use:	This product contains Sodium azide: a POISONOUS AND HAZARDOUS SUBSTANCE which should be handled by trained staff only.
Handling Advice:	Avoid freeze/thaw cycles.
Storage:	-20 °C

## Images



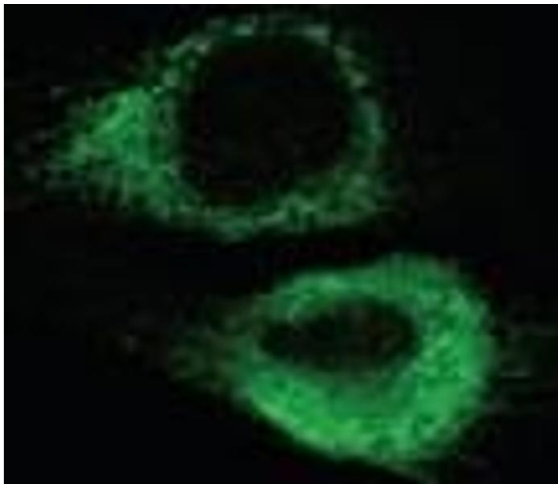
### Immunohistochemistry

**Image 1.** Immunohistochemistry analysis of human spleen tissue stained with KDEL, mAb (10C3) at 10 µg/mL.



### Western Blotting

**Image 2.** Western blot analysis: Lane 1: Grp78 (BiP) recombinant protein, Lane 2: RK-13, Lane 3: Mouse liver microsomes, Lane 4: Rat liver microsomes, Lane 5: HeLa Cell Lysate (heat shocked).



### Immunofluorescence

**Image 3.** Immunofluorescence analysis of endoplasmic reticulum staining of mouse C2C12 myoblasts transfected with wild type mouse ADAM12 using KDEL (Grp78, Grp94) mAb (10C3).