



Datasheet for ABIN7211530  
**anti-Synaptotagmin antibody**



[Go to Product page](#)

1 Image

### Overview

Quantity:	200 µg
Target:	Synaptotagmin (SYT)
Reactivity:	Rat, Mouse, Human
Host:	Mouse
Clonality:	Monoclonal
Conjugate:	This Synaptotagmin antibody is un-conjugated
Application:	Western Blotting (WB), Immunohistochemistry (IHC)

### Product Details

Immunogen:	Rat brain synaptic junction protein complexes .
Clone:	ASV30
Isotype:	IgG2a
Characteristics:	SYT,Synaptotagmin monoclonal antibody (ASV30)
Purification:	Protein G affinity purified.,Purified from mouse ascites.

### Target Details

Target:	Synaptotagmin (SYT)
Alternative Name:	Synaptotagmin ( <a href="#">SYT Products</a> )
UniProt:	<a href="#">P21707</a>

## Application Details

Application Notes: Western Blot (1:1,000, colorimetric)Suggested dilutions/conditions may not be available for all applications.Optimal conditions must be determined individually for each application.,Detects a band of ~65 kDa by Western blot.

Restrictions: For Research Use only

## Handling

Format: Liquid

Buffer: Liquid. In PBS containing 50 % glycerol and 0.09 % sodium azide.

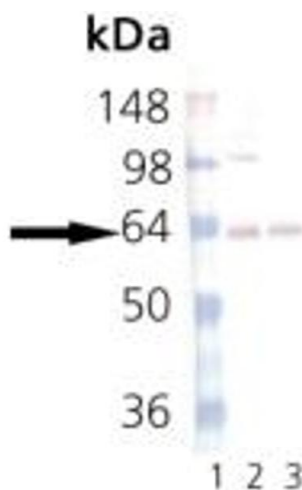
Preservative: Sodium azide

Precaution of Use: This product contains Sodium azide: a POISONOUS AND HAZARDOUS SUBSTANCE which should be handled by trained staff only.

Handling Advice: Avoid freeze/thaw cycles.

Storage: -20 °C

## Images



### Western Blotting

**Image 1.** Western blot analysis of Synaptotagmin: Lane 1: MW marker, Lane 2: Mouse Brain Tissue Lysate , Lane 3: Rat Brain Tissue Lysate .