

Datasheet for ABIN7211549
anti-MAVS antibody (AA 160-450)[Go to Product page](#)

1 Image

Overview

Quantity:	100 µg
Target:	MAVS
Binding Specificity:	AA 160-450
Reactivity:	Human
Host:	Rabbit
Clonality:	Polyclonal
Conjugate:	This MAVS antibody is un-conjugated
Application:	Western Blotting (WB), Immunoprecipitation (IP), Immunocytochemistry (ICC)

Product Details

Immunogen:	Recombinant human Cardif (CARD adapter inducing interferon-beta) (aa 160-450).
Characteristics:	CARD adapter inducing interferon-β IPS-1 Interferon-β promoter stimulator protein 1 MAVS Mitochondrial antiviral signalling protein VISA Virus-induced signalling adapter,Cardif (human) polyclonal antibody (AT107)
Purification:	Protein A-affinity purified.,Purified from rabbit serum.

Target Details

Target:	MAVS
Alternative Name:	Cardif (MAVS Products)
UniProt:	Q7Z434

Target Details

Pathways: [Activation of Innate immune Response](#), [Inositol Metabolic Process](#), [Hepatitis C](#)

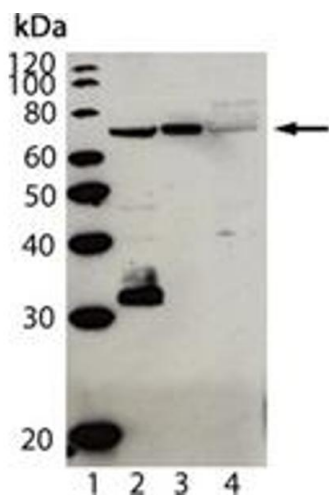
Application Details

Application Notes:	Immunocytochemistry (1:500)Immunoprecipitation (1:100)Western Blot (1:2,000)Suggested dilutions/conditions may not be available for all applications.Optimal conditions must be determined individually for each application.,Detects a band of ~65 kDa by Western blot.
Restrictions:	For Research Use only

Handling

Format:	Liquid
Buffer:	Liquid. In PBS containing 0.02 % sodium azide.
Preservative:	Sodium azide
Precaution of Use:	This product contains Sodium azide: a POISONOUS AND HAZARDOUS SUBSTANCE which should be handled by trained staff only.
Handling Advice:	Avoid freeze/thaw cycles.
Storage:	-20 °C
Storage Comment:	+4°C Stable for at least 1 year after receipt when stored at -20°C.
Expiry Date:	12 months

Images



Western Blotting

Image 1. Western blot analysis of Cardif (human), pAb (AT107) : Lane 1: MW marker, Lane 2: HepG2, Lane 3: PALA, and Lane 4: HeLa. Additional bands observed probably represent isoforms or cleaved products of Cardif.