

Datasheet for ABIN7211586

**anti-BCL2L13 antibody**[Go to Product page](#)**1** Image

## Overview

Quantity:	100 µg
Target:	BCL2L13
Reactivity:	Human
Host:	Mouse
Clonality:	Monoclonal
Conjugate:	This BCL2L13 antibody is un-conjugated
Application:	Western Blotting (WB), Immunoprecipitation (IP), Immunocytochemistry (ICC)

## Product Details

Immunogen:	Recombinant human Bcl-rambo.
Clone:	Rocky-2
Isotype:	IgG1
Specificity:	Recognizes the C-terminus of human Bcl-rambo (aa 224-459).
Characteristics:	Bcl-2-like protein 13  Mil1 protein,Bcl-rambo (human) (CT) monoclonal antibody (Rocky-2)
Purification:	Purified from concentrated hybridoma tissue culture supernatant.

## Target Details

Target:	BCL2L13
Alternative Name:	Bcl-rambo ( <a href="#">BCL2L13 Products</a> )
UniProt:	<a href="#">Q9BXK5</a>

## Target Details

Pathways: [Positive Regulation of Endopeptidase Activity](#)

## Application Details

Application Notes: Immunocytochemistry (1:300)Immunoprecipitation (1:100)Western Blot (1:1,000)Suggested dilutions/conditions may not be available for all applications.Optimal conditions must be determined individually for each application.,Detects endogenous protein by ICC, IP and WB.

Restrictions: For Research Use only

## Handling

Format: Liquid

Buffer: Liquid. In PBS containing 0.02 % sodium azide.

Preservative: Sodium azide

Precaution of Use: This product contains Sodium azide: a POISONOUS AND HAZARDOUS SUBSTANCE which should be handled by trained staff only.

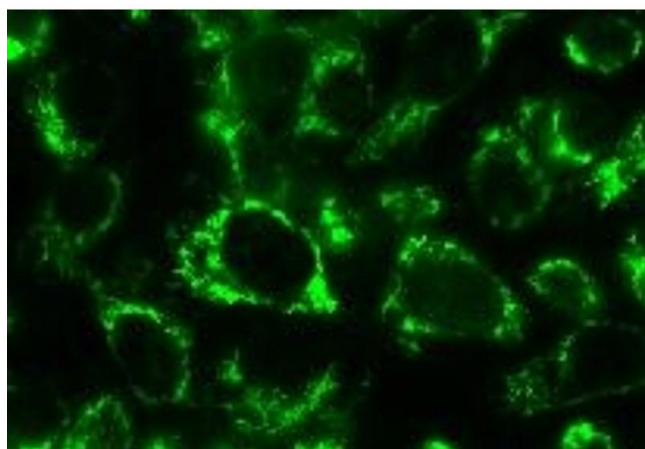
Handling Advice: Avoid freeze/thaw cycles.

Storage: -20 °C

Storage Comment: +4°C Stable for at least 1 year after receipt when stored at -20°C.

Expiry Date: 12 months

## Images



### Immunofluorescence

**Image 1.** Immunofluorescence microscopy showing the detection of endogenous Bcl-rambo in HELA cells with the MAb to Bcl-rambo (human) (CT) (Rocky-2). Method: Following fixation with 2 % paraformaldehyde/PBS, HELA cells were incubated with MAb to Bcl-rambo (human) (CT) (Rocky-2) at a 1:300 dilution. An anti-mouse IgG antibody conjugated with Alexa Fluor 488 was used for detection.