

Datasheet for ABIN7211592  
**anti-PIDD antibody (AA 776-910)**[Go to Product page](#)

## 2 Images

## Overview

Quantity:	100 µg
Target:	PIDD
Binding Specificity:	AA 776-910
Reactivity:	Human, Mouse
Host:	Mouse
Clonality:	Monoclonal
Conjugate:	This PIDD antibody is un-conjugated
Application:	Western Blotting (WB), Immunohistochemistry (Paraffin-embedded Sections) (IHC (p))

## Product Details

Immunogen:	Recombinant human PIDD death domain (aa 776-910).
Clone:	Anto-1
Isotype:	IgG1
Characteristics:	PIDD monoclonal antibody (Anto-1)
Purification:	Purified from ascites.

## Target Details

Target:	PIDD
Alternative Name:	PIDD ( <a href="#">PIDD Products</a> )
UniProt:	<a href="#">Q9HB75</a>

## Target Details

Pathways: [p53 Signaling](#), [Caspase Cascade in Apoptosis](#), [Positive Regulation of Endopeptidase Activity](#)

## Application Details

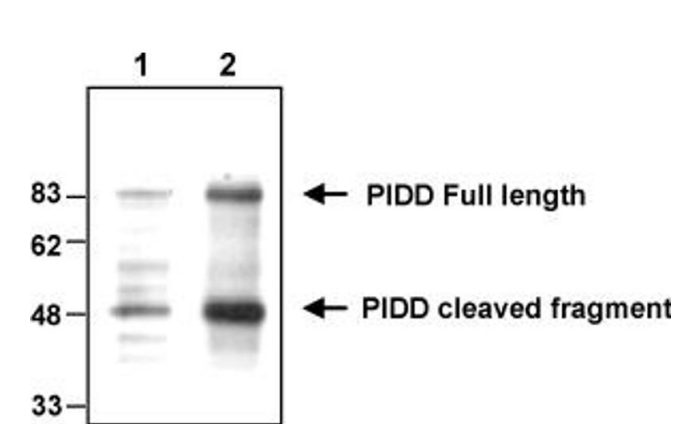
Application Notes: Western Blot (1:500)Suggested dilutions/conditions may not be available for all applications.Optimal conditions must be determined individually for each application.,Detects bands of ~90 kDa (full length protein) and ~50 kDa (cleaved protein) by Western blot.

Restrictions: For Research Use only

## Handling

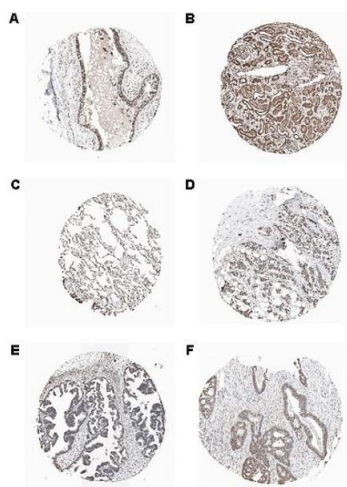
Format:	Liquid
Buffer:	Liquid. In PBS containing 0.02 % sodium azide.
Preservative:	Sodium azide
Precaution of Use:	This product contains Sodium azide: a POISONOUS AND HAZARDOUS SUBSTANCE which should be handled by trained staff only.
Handling Advice:	Avoid freeze/thaw cycles. After opening, prepare aliquots and store at -20 °C.
Storage:	-20 °C
Storage Comment:	+4°C Stable for at least 1 year after receipt when stored at -20°C.
Expiry Date:	12 months

## Images



**Western Blotting**

**Image 1.** Western blot analysis of endogenous and overexpressed human PIDD using MAb to PIDD (Anto-1) . Method: Cell extracts (1x10<sup>5</sup>) from HEK 293T wild type (lane 1) or transfected with a plasmid coding for human PIDD (lane 2) were resolved by SDS-PAGE under reducing conditions, transferred to nitrocellulose and incubated with the MAb to PIDD (Anto-1) at a 1:500 dilution for 2 hours. Proteins were visualized using a peroxidase-conjugated polyclonal antibody to mouse IgG and a chemiluminescence detection system. Note that two major forms of PIDD are



detected, representing full length and cleaved proteins, migrating at approximatively 90kDa and 50kDa, respectively."

### Immunohistochemistry

**Image 2.** Immunohistochemical staining of endogenous human PIDD in different human tissues (paraffin sections) using MAb to PIDD (Anto-1) . Method: Different human normal (A: Bronchus, B: Kidney, C: Lung) or cancer (D: Breast, E: Ovarian, F: Colo-rectal) tissues were stained with MAb to PIDD (Anto-1) by standard immunohistochemistry. Pictures courtesy of Human Protein Atlas ([www.proteinatlas.org](http://www.proteinatlas.org))."