



[Go to Product page](#)

Datasheet for ABIN7211618
anti-DVL2 antibody (AA 600-614)

1 Image

Overview

Quantity:	100 µL
Target:	DVL2
Binding Specificity:	AA 600-614
Reactivity:	Human, Mouse
Host:	Rabbit
Clonality:	Polyclonal
Conjugate:	This DVL2 antibody is un-conjugated
Application:	Western Blotting (WB), Immunohistochemistry (IHC)

Product Details

Immunogen:	Synthetic peptide corresponding to aa 600-614 (CG600AGRTGRPEERAPES614) of human and mouse dishevelled 2 protein. The amino acid sequence does not exist in human or mouse dvl-1 or dvl-3.
Characteristics:	DVL-2,Dishevelled-2 polyclonal antibody
Purification:	Purified from rabbit serum.

Target Details

Target:	DVL2
Alternative Name:	Dishevelled-2 (DVL2 Products)
Pathways:	Tube Formation

Application Details

Application Notes: Optimal working dilution should be determined by the investigator.

Comment: For Blocking peptide see Prod. No. BML-DP9427.

Restrictions: For Research Use only

Handling

Format: Liquid

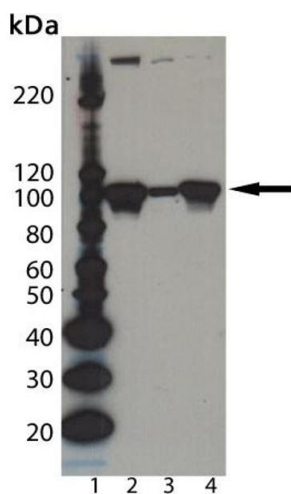
Buffer: Liquid. In PBS, pH 7.4, containing 10 mM sodium azide.

Preservative: Sodium azide

Precaution of Use: This product contains Sodium azide: a POISONOUS AND HAZARDOUS SUBSTANCE which should be handled by trained staff only.

Storage: -20 °C

Images



Western Blotting

Image 1. Western Blot analysis of Dishevelled-2 pAb : Lane 1: MW Marker, Lane 2: PC-3 cell lysate, Lane 3: Jurkat cell lysate, Lane 4: PC-12 cell lysate.