



[Go to Product page](#)

Datasheet for ABIN7211631  
**anti-CYLD antibody (AA 336-353)**

1 Image

### Overview

Quantity:	100 µL
Target:	CYLD
Binding Specificity:	AA 336-353
Reactivity:	Human
Host:	Rabbit
Clonality:	Polyclonal
Conjugate:	This CYLD antibody is un-conjugated
Application:	Western Blotting (WB)

### Product Details

Immunogen:	Synthetic peptide corresponding to aa 336-353 of human CYLD.
Characteristics:	Probable ubiquitin carboxyl-terminal hydrolase CYLD,CYLD (human) polyclonal antibody
Purification:	Purified by salt precipitation.,Purified from rabbit serum.

### Target Details

Target:	CYLD
Alternative Name:	<a href="#">CYLD (CYLD Products)</a>
UniProt:	<a href="#">Q9NQC7</a>
Pathways:	<a href="#">Apoptosis, Activation of Innate immune Response</a>

## Application Details

Application Notes: Western Blot (1:1,000) Suggested dilutions/conditions may not be available for all applications. Optimal conditions must be determined individually for each application.

Restrictions: For Research Use only

## Handling

Format: Liquid

Buffer: Liquid. In PBS containing 0.01 % sodium azide.

Preservative: Sodium azide

Precaution of Use: This product contains Sodium azide: a POISONOUS AND HAZARDOUS SUBSTANCE which should be handled by trained staff only.

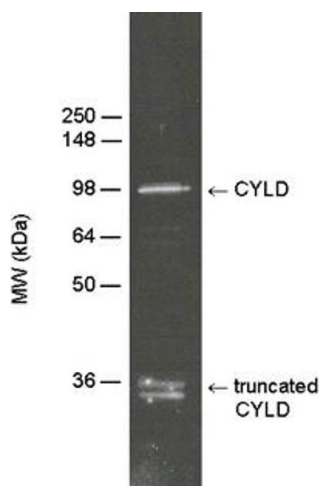
Handling Advice: Avoid freeze/thaw cycles. After opening, prepare aliquots and store at -20 °C.

Storage: -20 °C

Storage Comment: -20°C Stable for at least 1 year after receipt when stored at -20°C. Dilute with PBS, pH 7.2-7.4, containing 1% normal goat serum (if a goat anti-rabbit IgG linker antibody is to be used). Store diluted antibody at +4°C, do not freeze and use within 1 month.

Expiry Date: 12 months

## Images



### Western Blotting

**Image 1.** Detection of CYLD in HeLa S100 cytosolic fraction (, 10 µg) by Western blotting using PAb to CYLD (human) at 1:5000 dilution.