

Datasheet for ABIN7211676
anti-XBP1 antibody (C-Term)[Go to Product page](#)

1 Image

Overview

Quantity:	100 µg
Target:	XBP1
Binding Specificity:	C-Term
Reactivity:	Human, Mouse
Host:	Mouse
Clonality:	Monoclonal
Application:	Western Blotting (WB), ELISA, Immunocytochemistry (ICC), Immunoprecipitation (IP)

Product Details

Immunogen:	Synthetic peptide corresponding to the sequence near the C-terminus of human XBP-1, spliced isoform XBP1(S).
Clone:	8F6-11
Isotype:	IgG1
Characteristics:	X-box binding protein 1 Tax-responsive element-binding protein 5 TREB5 XBP2,XBP-1S monoclonal antibody (8F6.11)
Purification:	Protein G affinity purified.,Purified from concentrated hybridoma tissue culture supernatant.

Target Details

Target:	XBP1
Alternative Name:	XBP1 (XBP1 Products)

Target Details

UniProt: [P17861](#)

Pathways: [ER-Nucleus Signaling, Unfolded Protein Response](#)

Application Details

Application Notes: Immunocytochemistry (1:100) Suggested dilutions/conditions may not be available for all applications. Optimal conditions must be determined individually for each application. Detects a band of ~60 kDa by Western blot.

Restrictions: For Research Use only

Handling

Format: Liquid

Buffer: Liquid. In PBS containing 0.09 % sodium azide.

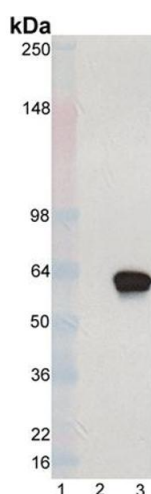
Preservative: Sodium azide

Precaution of Use: This product contains Sodium azide: a POISONOUS AND HAZARDOUS SUBSTANCE which should be handled by trained staff only.

Handling Advice: Avoid freeze/thaw cycles.

Storage: -20 °C

Images



Western Blotting

Image 1. Western blot analysis of XBP-1S mAb (8F6.11) : Lane 1: MW markers, Lane 2: mock-transfected CHO cell, Lane 3: XBP-1S (spliced isoform)-transfected CHO cell. The observed molecular weight of XBP-1S is ~60 kDa (calculated MW: 40 kDa).