



[Go to Product page](#)

Datasheet for ABIN721180  
**anti-FAM120C antibody (AA 351-450)**

1 Image

### Overview

Quantity:	100 µL
Target:	FAM120C
Binding Specificity:	AA 351-450
Reactivity:	Rat
Host:	Rabbit
Clonality:	Polyclonal
Conjugate:	This FAM120C antibody is un-conjugated
Application:	ELISA, Immunofluorescence (Cultured Cells) (IF (cc)), Immunofluorescence (Paraffin-embedded Sections) (IF (p)), Immunohistochemistry (Frozen Sections) (IHC (fro)), Immunohistochemistry (Paraffin-embedded Sections) (IHC (p))

### Product Details

Immunogen:	KLH conjugated synthetic peptide derived from human FAM120C
Isotype:	IgG
Cross-Reactivity:	Rat
Predicted Reactivity:	Human,Mouse,Dog,Cow,Sheep,Pig,Horse,Rabbit
Purification:	Purified by Protein A.

### Target Details

Target:	FAM120C
---------	---------

## Target Details

---

Alternative Name:	FAM120C ( <a href="#">FAM120C Products</a> )
Background:	<p>Synonyms: BJ HCC 21 tumor antigen, Constitutive coactivator of PPAR gamma like protein 2, Constitutive coactivator of PPAR-gamma-like protein 2, CXorf17, F120C_HUMAN, Fam120C, Family with sequence similarity 120C, Hypothetical protein LOC54954, LOC54954, ORF34, Protein FAM120C, Tumor antigen BJ-HCC-21.</p> <p>Background: Expressed at low levels in a number of tissues.Sequence similarities: Belongs to the constitutive coactivator of PPAR-gamma family.</p>
Gene ID:	54954

## Application Details

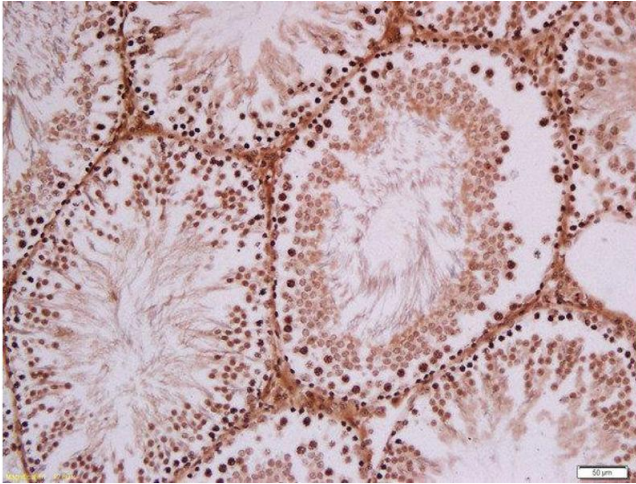
---

Application Notes:	<p>ELISA 1:500-1000</p> <p>IHC-P 1:200-400</p> <p>IHC-F 1:100-500</p> <p>IF(IHC-P) 1:50-200</p> <p>IF(IHC-F) 1:50-200</p> <p>IF(ICC) 1:50-200</p>
Restrictions:	For Research Use only

## Handling

---

Format:	Liquid
Concentration:	1 µg/µL
Buffer:	0.01M TBS( pH 7.4) with 1 % BSA, 0.02 % Proclin300 and 50 % Glycerol.
Preservative:	ProClin
Precaution of Use:	This product contains ProClin: a POISONOUS AND HAZARDOUS SUBSTANCE, which should be handled by trained staff only.
Storage:	4 °C,-20 °C
Storage Comment:	Shipped at 4°C. Store at -20°C for one year. Avoid repeated freeze/thaw cycles.
Expiry Date:	12 months



### Immunohistochemistry (Paraffin-embedded Sections)

**Image 1.** Formalin-fixed and paraffin embedded rat testis tissue labeled with Rabbit Anti-FAM120C Polyclonal Antibody, Unconjugated at 1:200 followed by conjugation to the secondary antibody and DAB staining