

Datasheet for ABIN7212024  
**anti-COL3 antibody**



[Go to Product page](#)

1 Image

## Overview

Quantity:	100 µL
Target:	COL3
Reactivity:	Human, Rat, Mouse
Host:	Mouse
Clonality:	Monoclonal
Conjugate:	This COL3 antibody is un-conjugated
Application:	Western Blotting (WB)

## Product Details

Purpose:	Collagen III Monoclonal Antibody
Immunogen:	Synthetic Peptide
Isotype:	IgG1
Specificity:	The antibody detects endogenous Collagen III protein.
Purification:	The antibody was affinity-purified from mouse ascites by affinity-chromatography using specific immunogen

## Target Details

Target:	COL3
Alternative Name:	Collagen III ( <a href="#">COL3 Products</a> )
Background:	Mouse Anti-Collagen III Monoclonal Antibody,COL3A1, Collagen alpha-1(III) chain,COL3A1

## Target Details

---

encodes the pro-alpha1 chains of type III collagen, a fibrillar collagen that is found in extensible connective tissues such as skin, lung, uterus, intestine and the vascular system, frequently in association with type I collagen. Mutations in COL3A1 are associated with Ehlers-Danlos syndrome types IV, and with aortic and arterial aneurysms. Two transcripts, resulting from the use of alternate polyadenylation signals, have been identified for COL3A1. Collagen alpha-1(III) chain

Molecular Weight: observed band 138kDa

Gene ID: 1281

UniProt: [P02461](#)

## Application Details

---

Application Notes: Optimal working dilutions should be determined experimentally by the investigator. Suggested starting dilutions are as follows: WB (1:1000).

Comment: Primary Antibody

Restrictions: For Research Use only

## Handling

---

Format: Liquid

Concentration: 1 mg/mL

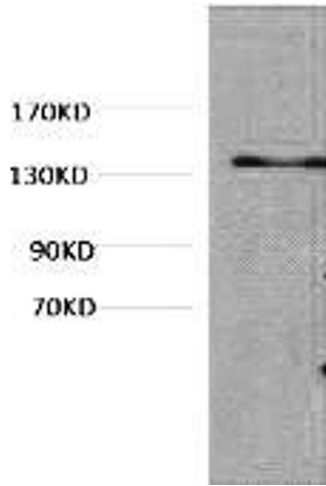
Buffer: PBS, pH 7.4, containing 0.02 % Sodium Azide as preservative and 50 % Glycerol.

Preservative: Sodium azide

Precaution of Use: This product contains Sodium azide: a POISONOUS AND HAZARDOUS SUBSTANCE which should be handled by trained staff only.

Storage: -20 °C

Storage Comment: Stable for one year at -20°C from date of shipment. For maximum recovery of product, centrifuge the original vial after thawing and prior to removing the cap. Aliquot to avoid repeated freezing and thawing.



### Western Blotting

**Image 1.** Western blot analysis of Hela, diluted at 1:1000.