



[Go to Product page](#)

Datasheet for ABIN7212070
anti-Phosphoserine antibody

3 Images

Overview

| | |
|--------------|--|
| Quantity: | 100 µL |
| Target: | Phosphoserine |
| Reactivity: | Various Species |
| Host: | Mouse |
| Clonality: | Monoclonal |
| Conjugate: | This Phosphoserine antibody is un-conjugated |
| Application: | Western Blotting (WB), Immunohistochemistry (Paraffin-embedded Sections) (IHC (p)) |

Product Details

| | |
|---------------|---|
| Purpose: | Phosphoserine Monoclonal Antibody |
| Immunogen: | Purified Protein |
| Isotype: | IgG1 |
| Specificity: | The antibody detects endogenous Phosphoserine protein. |
| Purification: | The antibody was affinity-purified from mouse ascites by affinity-chromatography using epitope-specific immunogen |

Target Details

| | |
|--------------|--|
| Target: | Phosphoserine |
| Abstract: | Phosphoserine Products |
| Target Type: | Amino Acid |

Target Details

Background: Mouse Anti-Phosphoserine Monoclonal Antibody, Serine (phosphatidylserine, PS), also known as serine phospholipids, two acyl serine. Phosphate ester compounds in the glycerol phosphate esters, cell membrane group, is one of the important constituents of cell membranes in the brain, especially in the nervous system of the body and also various functions of the brain (especially on the brain's memory and emotional stability) plays important roles, such as it can affect the membrane fluidity and permeability, and can activate the metabolism and synthesis of a variety of enzymes. Phosphoserine

Application Details

Application Notes: Optimal working dilutions should be determined experimentally by the investigator. Suggested starting dilutions are as follows: WB (1:1000-1:2000).

Comment: Primary Antibody

Restrictions: For Research Use only

Handling

Format: Liquid

Concentration: 1 mg/mL

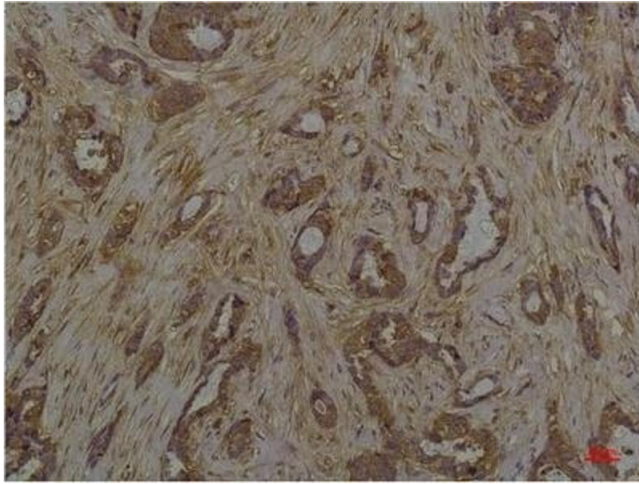
Buffer: PBS, pH 7.4, containing 0.02 % Sodium Azide as preservative and 50 % Glycerol.

Preservative: Sodium azide

Precaution of Use: This product contains Sodium azide: a POISONOUS AND HAZARDOUS SUBSTANCE which should be handled by trained staff only.

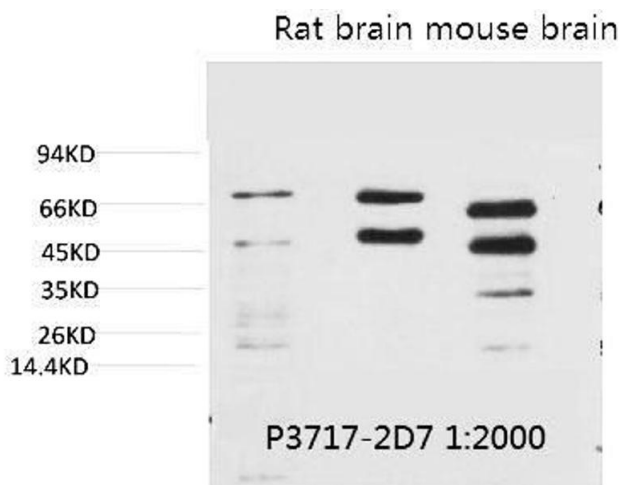
Storage: -20 °C

Storage Comment: Stable for one year at -20°C from date of shipment. For maximum recovery of product, centrifuge the original vial after thawing and prior to removing the cap. Aliquot to avoid repeated freezing and thawing.



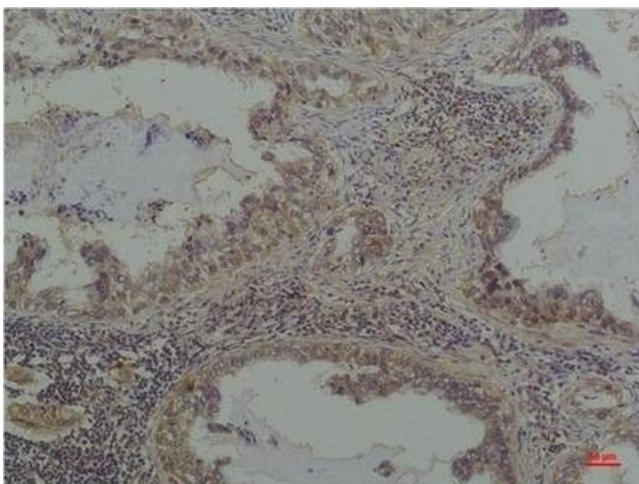
Immunohistochemistry

Image 1. Immunohistochemical analysis of paraffin-embedded Human Breast Carcinoma using Phosphoserine Mouse mAb diluted at 1:200.



Western Blotting

Image 2. Western blot analysis of 1) Hela, 2) Rat Brain Tissue, 3) Mouse Brain Tissue with Phosphoserine Mouse mAb diluted at 1:2000.



Immunohistochemistry

Image 3. Immunohistochemical analysis of paraffin-embedded Human Lung Carcinoma using Phosphoserine Mouse mAb diluted at 1:200.