



[Go to Product page](#)

Datasheet for ABIN7212242
anti-Luciferase antibody

4 Images

Overview

Quantity:	100 µL
Target:	Luciferase
Reactivity:	Firefly
Host:	Mouse
Clonality:	Monoclonal
Conjugate:	This Luciferase antibody is un-conjugated
Application:	Western Blotting (WB), Immunofluorescence (IF), Immunohistochemistry (Paraffin-embedded Sections) (IHC (p))

Product Details

Purpose:	Luciferase Mouse Monoclonal Antibody (6B8)
Immunogen:	Recombinant Protein of Luciferase of Luciferase
Clone:	6B8
Isotype:	IgG1
Specificity:	Luciferase protein detects endogenous levels of Luciferase.
Purification:	The antibody was affinity-purified from mouse ascites by affinity-chromatography using specific immunogen

Target Details

Target:	Luciferase
---------	------------

Target Details

Abstract: [Luciferase Products](#)

Background: Mouse Anti-Luciferase Mouse Monoclonal Antibody (6B8), Luciferase from the firefly has become one of the more widely used reporter proteins for the study of gene expression. Luciferase catalyzes a bioluminescent reaction which requires the substrate luciferin as well as Mg²⁺ and ATP. Mixing these reagents with the cell extract containing luciferase, results in a flash of light that decays rapidly. This light can be detected by a luminometer. The total light emission is proportional to the luciferase activity of the sample., Luciferase

Molecular Weight: observed band 60kDa

UniProt: [P08659](#)

Application Details

Application Notes: Optimal working dilutions should be determined experimentally by the investigator. Suggested starting dilutions are as follows: WB (1:1000-1:2000), IHC-P (1:100-1:200).

Comment: Primary Antibody

Restrictions: For Research Use only

Handling

Format: Liquid

Concentration: 1 mg/mL

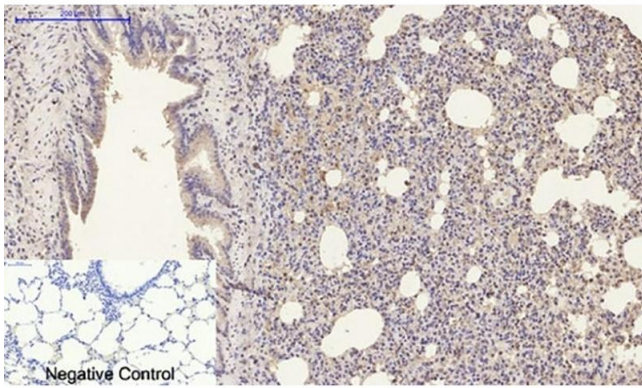
Buffer: PBS containing 50 % Glycerol, 0.5 % BSA and 0.02 % Sodium Azide.

Preservative: Sodium azide

Precaution of Use: This product contains Sodium azide: a POISONOUS AND HAZARDOUS SUBSTANCE which should be handled by trained staff only.

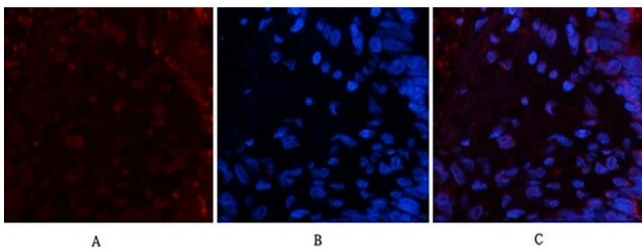
Storage: -20 °C

Storage Comment: Stable for one year at -20°C from date of shipment. For maximum recovery of product, centrifuge the original vial after thawing and prior to removing the cap. Aliquot to avoid repeated freezing and thawing.



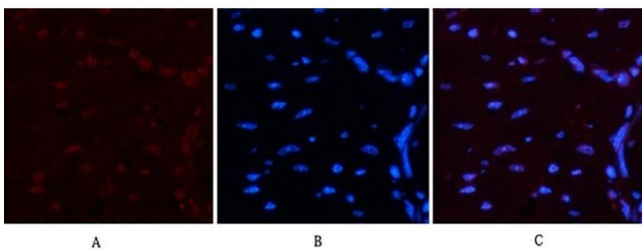
Immunohistochemistry

Image 1. Immunohistochemical analysis of paraffin-embedded rat lung tissue. 1, Luciferase Mouse Monoclonal Antibody (6B8) was diluted at 1:200 (4 °C, overnight). 2, Sodium citrate pH 6.0 was used for antibody retrieval (>98 °C, 20 min). 3, secondary antibody was diluted at 1:200 (room temperature, 30 min). Negative control was used by secondary antibody only.



Immunofluorescence

Image 2. Immunofluorescence analysis of human lung tissue. 1, Luciferase Mouse Monoclonal Antibody (6B8) (red) was diluted at 1:200 (4 °C, overnight). 2, Cy3 Labeled secondary antibody was diluted at 1:300 (room temperature, 50 min). 3, Picture B: DAPI (blue) 10 min. Picture A: Target. Picture B: DAPI. Picture C: merge of A+B.



Immunofluorescence

Image 3. Immunofluorescence analysis of mouse heart tissue. 1, Luciferase Mouse Monoclonal Antibody (6B8) (red) was diluted at 1:200 (4 °C, overnight). 2, Cy3 Labeled secondary antibody was diluted at 1:300 (room temperature, 50 min). 3, Picture B: DAPI (blue) 10 min. Picture A: Target. Picture B: DAPI. Picture C: merge of A+B.

Please check the [product details page](#) for more images. Overall 4 images are available for ABIN7212242.